

FARAMA

simple

is 

beautiful



WE ARE FARAMA

We live in a confusing world; too many choices, too many products, too much 'noise'.

FARAMA believes things can be different; the remedy simple.

Simple is beautiful.

Simple is pure, clear, transparent.

Simple is useable, clean, uncluttered.

Simple is convenient, reliable, timeless.

Simple is all of these things, and also the reason things are so rarely simple.

Because designing and making something simple is not as simple as it seems.

Simplicity means caring enough to consider actual needs before refining them to their essence - nothing more, nothing less, the final object easy to understand, use and live with.

This means getting closer to the user in order to determine where less equals more, and form most perfectly meets function; where everything is always in the right place at the right time.

This idea of simplicity is the guiding principle behind FARAMA.

It is reflected in our design-aesthetic, our mindset and culture.

The result is our promise reflected in glass.

FARAMA... Simple is beautiful.

CONTENTS

04 INSPIRATION

10 ROCK & POP ARTIST COLLECTION

20 LIFESTYLE

20 ICONS

30 VASES & BOWLS

74 ACCESSORIES

92 LIGHTING

102 DRINKWARE & SERVEWARE

102 ZERO

114 WINE

144 WHISKY & SPIRITS

184 BEVERAGES

208 SERVING

222 DESIGNERS

232 INDEX

All of our catalogues are available in digital formats. Digital catalogues have less impact on environment with zero waste and low carbon footprint.



CANDLE HOLDERS THAT INSPIRE CALM

Interview with Ozan Özalp



With the new philosophy of comfort fully modeling the current scenario, designers have turned their attention to expressive everyday objects that help enhance connection, togetherness, and joy, creating a boost in well-being. Case in point: the Ilo candle holders designed by Ozan Özalp – meant to bring a soothing yet uplifting ambiance to any living space.

1. When designing the Ilo collection, what was your starting point: form, function, material, or rather a specific feeling?

I approached the project with the idea of using another material, in addition to glass, as combining glass with a different texture can significantly impact the design. It was essential to establish this balance right from the start; after all, FARAMA is a glass manufacturer, so crystalline glass is always the key element. The design is striking but simple: the sculptural body features a ripple pattern to enhance the power of the candlelight. The other element is the copper plate – we experimented with different materials, playing with silky, bright surfaces that would create a dynamic play of reflections.

2. Lighting is the most powerful generator of atmosphere in any space. What kind of impact were you trying to achieve?

Nowadays, candles serve more as decoration than a light source. I started the project with this consideration, aiming to design a product that would promise an experience extending beyond mere appearance or function. My goal was to create a candle holder set that would allow people to relax and enjoy the moment. Looking at the light waves filtering through the dome's ripples, creating a magical and meditative ambiance, I believe I have achieved it.

3. FARAMA collections are popular for their minimal, playful design. What's the secret to striking the right balance between these two seemingly opposing elements?

Balancing contrasting elements, such as modern and classic, artificial and natural, heavy and light, or simple and playful, as in this case, can be risky. However, if done right, the result will most likely be very successful. I'd say the secret lies in intuition and experience. Sometimes, you must embrace the trial and error method, too.

4. You've been part of the FARAMA Design Team for several years. How do you incorporate your personal

sense of style into the brand's aesthetic?

I think FARAMA has a design language in line with my own life philosophy and mindset. When designing a piece for FARAMA, I ask myself, "Would I buy this?" It is easier to create a product thinking of yourself as a potential end user.

5. What are some of your favorite pieces you've designed so far, and why?

Besides Ilo, I would choose the Caldera collection. It was the first product I created for FARAMA, and it will always have a special place in my heart. The development process was particularly demanding since the uneven inner bottom of the design forced our production limits. Knowing the behind-the-scenes challenges makes it even more precious for me.

6. How do you stay creative during challenging times?

Being a good observer is a must. Even a simple stone you come across in nature, or the music you listen to, can serve as inspiration if you know how to observe. I try to feed my creativity by noticing and paying attention to the world around me.

7. What gives you the most gratification in your work?

Since my childhood, I have always been fascinated by the idea of creating something; I would observe different forms, structures, textures, and materials. I'd say the first moment you see your design in a store, at a restaurant, or a café is the most gratifying.



A CLOSER LOOK AT THE NEW COLORWAY

Interview with Tamer Nakışçı



Clean contemporary shapes, tactile surface treatments, and a subtle splash of color. The Mist and Mist Lights collections designed by Tamer Nakışçı offer a range of multifunctional pieces that combine the timeless beauty of glass with the innovative, irreverent spirit we've come to expect from **FARAMA**. Now available in a new dusty rose hue, discover the latest decorative designs to spruce up both living spaces and moods..

1. What inspires you, and why?

The future, and to discover the unknown. I am trained as an industrial designer, with many other influences in the background, including performing arts and music. This has allowed me to look at things from both a functional and an emotional perspective. For me, an object has to have a really good reason to exist. I'm constantly looking for new ways to see and reflect on reality and to create new scenarios between people, objects, and spaces.

2. Glassmaking boasts a rich tradition spanning centuries. Where does innovation come from?

As the world changes, so does our perception of it and the needs around it. I believe there will always be room for innovation. It is human nature to explore, and glass is a unique material that allows us to experiment and to see results almost instantly. For me, the most inspiring quality of glass is its ability to bend and reflect light, which is a starting point for my work most of the time. I think this is the true beauty of glass that should be celebrated.

3. Sculptural and stackable, the unique design characterizing the collections allows you to create playful, unexpected compositions. What was the most challenging part of developing it?

There has been a lot of back and forth in the prototyping process in terms of the thickness and the angles, as I am quite detail-oriented, and I love that experience. I think, in the end, the most challenging part was actually choosing which pieces would go into production.

4. What drew you to this particular shade of pink?

Every color has its frequency and its way of making us feel. I think dusty rose is a futuristic color, matching current aesthetics. We wanted to make sure the color we picked would enhance the warmth of the candlelight and adapt to the new Mist vases as well, maintaining transparency without obscuring the contents.

5. How has your creative partnership with FARAMA evolved over the years?

I have been with FARAMA since the beginning, yet still, every creative meeting feels like the first one. It has been incredible to witness our growth together over the years. We had so many international milestones. It feels great to be on the same wavelength as there is so much more to discover.

6. The collection also stands out with its intriguing ripple texture, heightening the effects of color, light, and shade. What guides your creative process: the visual or sensory experience?

When designing the Mist vase, the first instinct was a visual experience - I thought of an object that would blur and magnify what's within, allowing the user to see things differently and bring them into the moment. I wanted to incorporate the same idea in the new Mist Lights collection. The addition of the fire element has been the most exciting, and we worked hard to create an experience that speaks to all senses and the imagination.

7. Do you have a trick for lifting interiors?

The perfect form and perfect setting don't exist. We create them for every situation. Even if you achieve a satisfying result, that feeling doesn't last too long, as you get used to it or get a better idea. So, my advice would be to keep an open mind.



STEM ZERO GRACE: NEW SILHOUETTE, SAME SPIRIT

Interview with Umut Sinan Karaca

STEM ZERO



Originally launched in 2021, the Stem Zero collection revolutionized the landscape of everyday glassware with **FARAMA** groundbreaking Ion Shielding Technology delivering unparalleled strength, clarity, and lightness. The latest addition to the range, designed by Umut Sinan Karaca, the Grace edit uses the same signature formula, updated with new silhouettes. Each vessel is expertly shaped and crafted to make red and white wine, as well as champagne, taste and look their best, cementing **FARAMA** commitment to reinventing tradition and bringing out the natural beauty of glass in fresh, contemporary ways.

1. How would you describe the Grace edit in three words?

Delicate, elegant, and powerful.

2. How do you balance an existing narrative with a new design idea?

The core values at the heart of Stem Zero are handcraft, mastership, and technological advancement. The collection also embodies elegance, delicacy, and lightness. These concepts are a strong foundation for a designer, and they helped shape the Grace edit.

3. Supremely lightweight yet durable, the Stem Zero collection has set a new benchmark for glassware. Can you talk about how you combine craftsmanship and technology in your work?

When designing an industrial product, you cannot dissociate the designer from the producer. An idea that cannot be produced doesn't have any value. Stem Zero standards were only a dream, but the **FARAMA** team pursued this dream and made it come true. My role in this process was to create an aesthetic that would benefit the desired quality criteria. Having an extensive knowledge of the manufacturing techniques, as a designer, you can deliver original, actionable approaches that push beyond the limits.

4. Can you share a little about your personal aesthetic? How was it formed?

I believe that people are inherently wired to perceive reality through aesthetics. Over time, this intrinsic human trait is suppressed or unlocked. I studied fine arts, so I've been exposed to all the different art forms, including painting, sculpting, and ceramics, alongside a wide range of disciplines, such as interior architecture, textiles, and graphic design. I believe that bringing together people from different fields adds depth and nuance to the creative process. A designer must consider almost everything they come across -whether beautiful or ugly- at least in their imagination, even if they do not implement it in real life. They must try to understand it. I believe that one cannot express something without understanding it first.

5. How do you navigate the challenge of creating something with universal appeal while maintaining your own identity?

Designing involves empathy. You attempt to assume another identity. You must reflect on who you are interacting with: where they would eat, what they would laugh at, their passions. Imagine designing a cocktail glass: you would visualize people dancing and raising glasses, and you would be inspired by the sense of togetherness this creates. You're always looking for the common ground that unites people and cultures. Once you capture that, you transform it into a universal vision free from your own identity. This process moves you away from where you are and takes you on a virtual journey to somewhere else entirely.

6. How has the new global scenario shifted your creative outlook?

Concepts such as global warming, waste, and sustainability bring about a set of shifts in your design perspective. Coupled with the pandemic, all these inevitable transformations the world undergoes affect you as a designer, and you cannot be indifferent to them. Considering that design is one of the building blocks of change in our world, your creative outlook is inevitably affected.

7. You've been part of the FARAMA design team since day one. Looking back, how do you feel your work has changed or evolved?

It's a fantastic playground and a great opportunity for a designer. Even the products that seem impossible to bring to life turn into an experience shared by all teams, including design, production, and sales. These joint endeavors create a special feeling of excitement, connection, and the team's confidence in the brand.

8. What is your favorite wine?

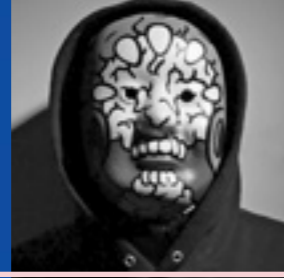
Red wine, Shiraz in particular, and wine produced from the local grapes, Kalecik Karasi.

ROCK & POP ARTIST

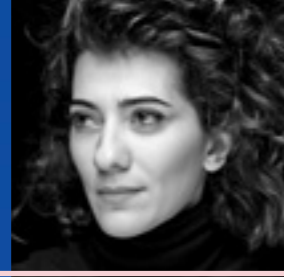
LUCA
FONT



CINS
3000



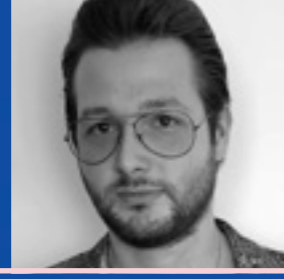
UMUT
KARAMAN



KIEN



ERENSU
EKMEKÇİLER



simple





LIMITED EDITION

FACETED SKULL L

OPAL WHITE
28460 • 1108945
198 * 260 mm / 210 mm
7 3/4 * 10 1/4" / 8 1/4"



LIMITED EDITION

FACETED SKULL L

OPAL WHITE
28460 • 1108943
198 * 260 mm / 210 mm
7 3/4 * 10 1/4" / 8 1/4"



LIMITED EDITION

FACETED SKULL L

OPAL WHITE
28460 • 1108946
198 * 260 mm / 210 mm
7 3/4 * 10 1/4" / 8 1/4"



LIMITED EDITION

FACETED SKULL L

LUMINOUS GREEN
28460 • 1108940
198 * 260 mm / 210 mm
7 3/4 * 10 1/4" / 8 1/4"



LIMITED EDITION

FACETED SKULL L

LUMINOUS GREEN
28460 • 1116027
198 * 260 mm / 210 mm
7 3/4 * 10 1/4" / 8 1/4"



LIMITED EDITION

FACETED SKULL L

BLACK
28460 • 1108944
198 * 260 mm / 210 mm
7 3/4 * 10 1/4" / 8 1/4"



LIMITED EDITION

FACETED SKULL L

BLACK
28460 • 1108941
198 * 260 mm / 210 mm
7 3/4 * 10 1/4" / 8 1/4"



LIMITED EDITION

FACETED SKULL L

BLACK
28460 • 1108942
198 * 260 mm / 210 mm
7 3/4 * 10 1/4" / 8 1/4"



LIMITED EDITION

FACETED SKULL L

BLACK
28460 • 1108938
198 * 260 mm / 210 mm
7 3/4 * 10 1/4" / 8 1/4"



LIMITED EDITION

FACETED SKULL L

Black
28460 • 1108939
198 * 260 mm / 210 mm
7 3/4 * 10 1/4" / 8 1/4"

MEMENTO MORI



FACETED SKULL S

CLEAR

25397 • 1108931

80 * 105 mm / 83 mm

3 1/4 * 4 1/4 * 3 1/4"



FACETED SKULL S

CLEAR

25397 • 1108934

80 * 105 mm / 83 mm

3 1/4 * 4 1/4 * 3 1/4"



FACETED SKULL S

CLEAR

25397 • 1108936

80 * 105 mm / 83 mm

3 1/4 * 4 1/4 * 3 1/4"



FACETED SKULL S

BLACK

25397 • 1108932

80 * 105 mm / 83 mm

3 1/4 * 4 1/4 * 3 1/4"



FACETED SKULL S

BLACK

25397 • 1108933

80 * 105 mm / 83 mm

3 1/4 * 4 1/4 * 3 1/4"



FACETED SKULL S

BLACK

25397 • 1108935

80 * 105 mm / 83 mm

3 1/4 * 4 1/4 * 3 1/4"



FACETED SKULL S

BLACK

25397 • 1108937

80 * 105 mm / 83 mm

3 1/4 * 4 1/4 * 3 1/4"



ROCK & POP ARTIST COLLECTION



VASE
OPAL WHITE
28552 • 1112688
80 mm / 150 mm
3 1/4" / 6"



VASE
OPAL WHITE
28552 • 1112687
80 mm / 150 mm
3 1/4" / 6"



VASE
OPAL WHITE
28552 • 1112686
80 mm / 150 mm
3 1/4" / 6"

MINI MAGNOLIA



MINI MAGNOLIA



JUG
WITH COVER
28423 • 1112692
1000 cc / 88 mm / 280 mm
33 3/4 oz / 3 1/2" / 11"



JUG
WITH COVER
28423 • 1112693
1000 cc / 88 mm / 280 mm
33 3/4 oz / 3 1/2" / 11"

FINESSE



FINESSE



ROCK & POP ARTIST COLLECTION



SET OF 4
HIGHBALL GLASSES
96867 • 1112778
445 cc / 151 mm
15 oz / 6"



SET OF 4
GLASSES
96865 • 1112772
390 cc / 88 mm
13 1/4 oz / 3 1/2"

FINESSE



SET OF 4
HIGHBALL GLASSES
96866 • 1112777
480 cc / 154 mm
16 1/4 oz / 6"

MIRAGE



FINESSE
MIRAGE

L I F E S T Y L E

I C O N S





*Ali
Bakova*

M E M E N T O M O R I

A L I B A K O V A





FACETED SKULL L
CLEAR
28460 • 1075628
 198 * 260 mm / 210 mm
 7 3/4 * 10 1/4" / 8 1/4"



FACETED SKULL L
BLACK
28460 • 1075631
 198 * 260 mm / 210 mm
 7 3/4 * 10 1/4" / 8 1/4"



FACETED SKULL L
OPAL WHITE
28460 • 1076783
 198 * 260 mm / 210 mm
 7 3/4 * 10 1/4" / 8 1/4"



FACETED SKULL L
SANDBLASTED BLACK
28460 • 1108532
 198 * 260 mm / 210 mm
 7 3/4 * 10 1/4" / 8 1/4"



FACETED SKULL L
LUMINOUS GREEN
28460 • 1086327
 198 * 260 mm / 210 mm
 7 3/4 * 10 1/4" / 8 1/4"



FACETED SKULL L
SILVER
28460 • 1076926
 198 * 260 mm / 210 mm
 7 3/4 * 10 1/4" / 8 1/4"

LIMITED EDITION



FACETED SKULL L
COPPER
28460 • 1076927
 198 * 260 mm / 210 mm
 7 3/4 * 10 1/4" / 8 1/4"

LIMITED EDITION



FACETED SKULL M
CLEAR
25640 • 1108534
 117 * 153 mm / 125 mm
 4 1/2 * 6" / 5"

MEMENTO MORI

Exquisitely sculptured glass ornament designed by Istanbul-based Ali Bakova. Shaped as the top half of a human skull, the ornaments rest on a flat base. The pieces come in two sizes with various colors, offering a bold or subtle addition to any desk or bookshelf. The glass is cut in sharp prismatic strokes, reflecting the light in a powerful way.



MEMENTO MORI

Exquisitely sculptured glass ornament designed by Istanbul-based Ali Bakova. Shaped as the top half of a human skull, the ornaments rest on a flat base. The pieces come in two sizes with various colors, offering a bold or subtle addition to any desk or bookshelf. The glass is cut in sharp prismatic strokes, reflecting the light in a powerful way.





FACETED SKULL S
LUMINOUS GREEN
25397 • 1086330
80 * 105 mm / 83 mm
3 1/4 * 4 1/4" / 3 1/4"



FACETED SKULL S
CLEAR
25397 • 1075634
80 * 105 mm / 83 mm
3 1/4 * 4 1/4" / 3 1/4"



FACETED SKULL S
BLACK
25397 • 1075637
80 * 105 mm / 83 mm
3 1/4 * 4 1/4" / 3 1/4"



FACETED SKULL S
GOLD BOTTOM
25397 • 1086333
80 * 105 mm / 83 mm
3 1/4 * 4 1/4" / 3 1/4"



FACETED SKULL S
COPPER BOTTOM
25397 • 1086336
80 * 105 mm / 83 mm
3 1/4 * 4 1/4" / 3 1/4"



FACETED SKULL S
SANDBLASTED BLACK
25397 • 1086350
80 * 105 mm / 83 mm
3 1/4 * 4 1/4" / 3 1/4"

MEMENTO MORI

MEMENTO MORI

They are iconic items, and the centrepiece of the FARAMA Memento Mori collection. The skulls act as a constant reminder of our mortality, and an inspiration to live life to the full, making the most of every moment we have.





SKULL BOWL S
SMOKE
28690 • 1086658
130 * 134 mm / 81 mm
5 * 5 1/4" / 3 1/4"



SKULL BOWL S
BLACK
28690 • 1086660
130 * 134 mm / 81 mm
5 * 5 1/4" / 3 1/4"



SKULL BOWL S
OPAL WHITE
28690 • 1086659
130 * 134 mm / 81 mm
5 * 5 1/4" / 3 1/4"



SKULL BOWL L
SMOKE
28416 • 1076779
240 * 249 mm / 150 mm
9 1/2 * 9 3/4" / 6"



SKULL BOWL L
BLACK
28416 • 1075713
240 * 249 mm / 150 mm
9 1/2 * 9 3/4" / 6"



SKULL BOWL L
OPAL WHITE
28416 • 1076780
240 * 249 mm / 150 mm
9 1/2 * 9 3/4" / 6"



WHISKY BOTTLE
92926 • 1107757
750 cc / 115 * 155 mm / 183 mm
25 1/4 oz / 4 1/2 * 6" / 7 1/4"



SET OF 2 WHISKY GLASSES
22610 • 1107964
300 cc / 106 mm
10 1/4 oz / 4 1/4"



TEALIGHT HOLDER
CLEAR
25435 • 1107069
80 * 105 mm / 75 mm
3 1/4 * 4 1/4" / 3"

MEMENTO MORI

MEMENTO MORI



L I F E S T Y L E

V A S E S & B O W L S



SEBASTIAN HERKNER



*Sebastian
Herkner*

B E R E T





LIDDED VESSEL
COBALT BLUE
28936 • 1101357
130 mm / 107 mm
5" / 4 1/4"



LIDDED VESSEL
CARAMEL
28936 • 1101359
130 mm / 107 mm
5" / 4 1/4"



LIDDED VESSEL
PETROLEUM GREEN
28938 • 1101365
160 mm / 154 mm
6 1/4" / 6"



LIDDED VESSEL
CARAMEL
28938 • 1101367
160 mm / 154 mm
6 1/4" / 6"



LIDDED VESSEL
AMBER
28937 • 1101361
214 mm / 65 mm
8 1/4" / 2 1/2"



LIDDED VESSEL
CARAMEL
28937 • 1101363
214 mm / 65 mm
8 1/4" / 2 1/2"

BERET

BERET

Like the inimitable French headgear, these lidded vessels are remarkable for their elegant, effortless simplicity. Lids crafted from silky-looking brass close over softly tinted glass containers -in three sizes- like the tasteful toppers of the Basques people, who originated the beret.

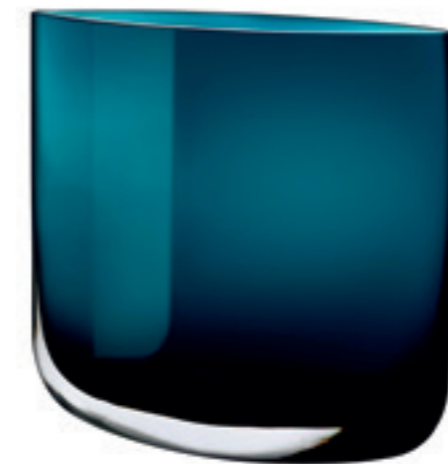




PENTAGON DESIGN



VASE
CLEAR
38004 • 1101941
315 mm / 300 mm
12 1/2" / 11 3/4"



VASE
PETROLEUM GREEN
38004 • 1101943
315 mm / 300 mm
12 1/2" / 11 3/4"



VASE
CARAMEL
38004 • 1101945
315 mm / 300 mm
12 1/2" / 11 3/4"

BLADE

BLADE

Playing on glass' innate material contradictions, the Blade vases juxtapose soft and hard, smooth and sharp, in a single object. Inspired by the art world's explorations into sheer overlain color, Blade gives a nod, in particular, to the work of artists, whose works rely on the overlap of transparent hues.





VASE
CLEAR
38005 • 1101946
206 * 108 mm / 400 mm
8 * 4 2/4" / 15 3/4"



VASE
PETROLEUM GREEN
38005 • 1101948
206 * 108 mm / 400 mm
8 * 4 2/4" / 15 3/4"



VASE
CARAMEL
38005 • 1101950
206 * 108 mm / 400 mm
8 * 4 2/4" / 15 3/4"



VASE
Clear
28920 • 1098966
395 * 130 mm / 200 mm
15 1/2 * 5" / 7 3/4"



VASE
Petroleum Green
28920 • 1101952
395 * 130 mm / 200 mm
15 1/2 * 5" / 7 3/4"



VASE
Caramel
28920 • 1101954
395 * 130 mm / 200 mm
15 1/2 * 5" / 7 3/4"



VASE S
BLUE
28289 • 1055646
350 * 300 mm / 315 mm
13 3/4 * 11 3/4" / 12 1/2"



VASE L
BLUE
28287 • 1055649
400 * 365 mm / 360 mm
15 3/4 * 14 1/4" / 14 1/4"



Playful and modern, Bubble vases in either smoke or blue have a funky and relaxed air to them. Made by a master blower, they are free shapes -not from a mould- so not one of them will ever be the same. Their shape retains a raw and organic feel, and is a vivid representation of the art of glassblowing.



LIMITED EDITION

VASE
8150 • 1108336
168 mm / 388 mm
6 1/2" / 15 1/4"



LIMITED EDITION

VASE
8151 • 1108338
258 mm / 342 mm
10 1/4" / 13 1/2"



LIMITED EDITION

BOWL
8152 • 1108340
358 mm / 266 mm
14" / 10 1/2"



LIMITED EDITION

BOWL
8153 • 1108342
462 mm / 175 mm
18 1/4" / 7"

CONCENTRICS

CONCENTRICS

"No doubt, the most seductive feature of glass is its transparency," Arad says. But the Concentrics vessels make the most of the malleability of the material as well. His second collaboration with FARAMA, this four piece set of nesting bowls and vases were handblown using an artisanal process called *çeşm-i bülbül* that originated in İstanbul, fusing slender strips of colored glass into the clear body of each container.





VASE
28453 • 1076521
50 mm / 200 mm
2" / 7 3/4"



CANDLE HOLDER
28454 • 1076523
90 mm / 128 mm
3 1/2" / 5"



BOWL
28437 • 1075300
130 mm / 103 mm
5" / 4"



VASE
PURPLE
28387 • 1091741
180 mm / 400 mm
7" / 15 3/4"

LIMITED EDITION



BOWL
PURPLE
28435 • 1091756
240 mm / 135 mm
9 1/2" / 5 1/4"

LIMITED EDITION



DEMIJOHN XL
SMOKE
17756 • 1050840
325 mm / 485 mm
12 3/4" / 19"



DEMIJOHN L
SMOKE
17754 • 1050838
260 mm / 340 mm
10 1/4" / 13 1/2"

CONTOUR

DAME JEANNE

CONTOUR

The curvature of the Contour collection cleverly reflects the rich metallic sheen, the density of the glass changing as one nears the rim. Both solidly-built items, they offer a dramatic centerpiece to any table while retaining FARAMA passion for simplicity. These items in the Contour range are already well-known for their dramatic copper and gold base that seamlessly blends into clear crystal glass. The selection includes a candle holder, two vases and two bowls.



DAME JEANNE

A play on the term Demijohn -the traditional French jug used to ferment wine- these two brushed-grey vases can be used as ornaments, or to hold a single flower. The XL version is a floor standing item, the smaller sized is for a windowsill or bookshelf. Using them to refract light adds a startling sense of drama to any home.



SEBASTIAN HERKNER

*Sebastian
Herkner*

ECRIN





LIDDED VESSEL
PETROLEUM GREEN LID
92760 • 1105403
94 mm / 125 mm
3 3/4" / 5"



LIDDED VESSEL
PETROLEUM GREEN LID
92762 • 1105405
166 mm / 118 mm
6 1/2" / 4 3/4"



LIDDED VESSEL
PETROLEUM GREEN LID
92761 • 1105404
146 mm / 182 mm
5 3/4" / 7 1/4"



LIDDED VESSEL
RED LID
92760 • 1105400
94 mm / 125 mm
3 3/4" / 5"



LIDDED VESSEL
AMBER LID
92762 • 1105402
166 mm / 118 mm
6 1/2" / 4 3/4"



LIDDED VESSEL
CARAMEL LID
92761 • 1105401
146 mm / 182 mm
5 3/4" / 7 1/4"

ECRIN

ECRIN

This collection is inspired by the Earth Pyramids of Ritten, a very unique formation of the local landscape. "The idea of balancing a round stone on the top of another volume was fascinating me to design Ecrin", a collection of containers in three sizes with a stone-like lid on top. These lids are smooth like river stones blown in colored glass. The bases of the containers are handmade in thick glass to contrast the lightness of the lids. It is a composition of volumes, colors and space in glass.





BOWL
CLEAR
28533 • 1076890
162 mm / 75 mm
6 1/2" / 3"



BOWL
CLEAR
28541 • 1076886
220 mm / 74 mm
8 3/4" / 3"



BOWL
CLEAR
28535 • 1076882
269 mm / 125 mm
10 1/2" / 5"



BOWL
CLEAR
28536 • 1076884
300 mm / 100 mm
11 3/4" / 4"



BOWL
CLEAR
31983 • 1076888
322 mm / 230 mm
12 3/4" / 9"



BOWL
OPAL PINK
28035 • 1050812
270 mm / 110 mm
10 3/4" / 4 1/4"



BOWL
SMOKE
28035 • 1050810
270 mm / 110 mm
10 3/4" / 4 1/4"

HEADS UP

KURAGE

HEADS UP

The double curve of the design plays with the light, the thick base of each item creating the sense that each of the pieces are floating in air. Each item incorporates the same element of sensuousness and light; the bowls have a perfect balance of the masculine and feminine.



KURAGE

Another reversible item, the vase is a large blown-glass bowl in smoked grey or FARAMA pink. A dramatic piece that is freely blown, ensuring that each is completely unique, it can be used for flower arrangement or simply storage. Turned on its head, it also works as a display stand for cakes and desserts. Its soft curves are irresistible, providing a magnificent pedestal for any display.





VASE
SMOKE
28304 • 1050814
180 mm / 350 mm
7" / 13 3/4"



VASE
SMOKE
23454 • 1050816
180 mm / 200 mm
7" / 7 3/4"

INCA

INCA

A magical glass vase in smoked grey, its angles are Escher-like in their seeming illogicality. The vase appears to be triangular and circular at the same time, and the way the glass twists around itself creates a fascinating illusion. The edges are soft and slightly elliptic, making the vase beautiful to touch. An object which will highlight any room, the Inca comes in two sizes, both as mesmerising as each other.



D E F N E K O Z



*Defne
Koz*

L A Y E R S





LAYERS



LIMITED EDITION

VASE
OPAL WHITE
28810 • 1095745
138 * 68 mm / 325.5 mm
5 1/2 * 2 3/4" / 12 3/4"

VASE
AMBER
28810 • 1095746
138 * 68 mm / 325.5 mm
5 1/2 * 2 3/4" / 12 3/4"

VASE
SMOKE
28810 • 1095747
138 * 68 mm / 325.5 mm
5 1/2 * 2 3/4" / 12 3/4"

VASE
GOLD
28810 • 1095748
138 * 68 mm / 325.5 mm
5 1/2 * 2 3/4" / 12 3/4"

LAYERS

This vase consists of three blown-glass vessels in graphical forms that nest together, letting their various translucent hues overlap.



VASE
OPAL WHITE
28812 • 1095753
395 mm * 230 mm / 227.5 mm
15 2/4 * 9" / 9"

VASE
AMBER
28812 • 1095754
395 mm * 230 mm / 227.5 mm
15 2/4 * 9" / 9"

VASE
STEEL BLUE
28812 • 1095755
395 mm * 230 mm / 227.5 mm
15 2/4 * 9" / 9"

LAYERS

LAYERS





VASE
OPAL WHITE
28811 • 1095749
261 * 125 mm / 276 mm
10 1/4 * 5" / 10 3/4"



VASE
AMBER
28811 • 1095750
261 * 125 mm / 276 mm
10 1/4 * 5" / 10 3/4"



VASE
STEEL BLUE
28811 • 1095751
261 * 125 mm / 276 mm
10 1/4 * 5" / 10 3/4"



VASE
PLATIN
28811 • 1095752
261 * 125 mm / 276 mm
10 1/4 * 5" / 10 3/4"

LIMITED EDITION





VASE
STEEL BLUE
20787 • 1116378
180 mm / 320 mm
7" / 12 1/2"



VASE
OPAL WHITE
20787 • 1116374
180 mm / 320 mm
7" / 12 1/2"



VASE
OPAL PINK
20787 • 1116375
180 mm / 320 mm
7" / 12 1/2"



VASE
STEEL BLUE
20791 • 1116373
240 mm / 200 mm
9 1/2" / 7 3/4"



VASE
OPAL WHITE
20791 • 1116376
240 mm / 200 mm
9 1/2" / 7 3/4"



VASE
OPAL PINK
20791 • 1116377
240 mm / 200 mm
9 1/2" / 7 3/4"



VASE
STEEL BLUE
28298 • 1116381
88 mm / 280 mm
3 1/2" / 11"



VASE
OPAL WHITE
28298 • 1116379
88 mm / 280 mm
3 1/2" / 11"



VASE
OPAL PINK
28298 • 1116380
88 mm / 280 mm
3 1/2" / 11"

MAGNOLIA

MAGNOLIA

MAGNOLIA

Because of the method by which these vases are made, not one of them is exactly the same. Handblown, half of the glass is coloured in either pink, white or blue. The bottom half of the vase remains clear in order to reveal its contents. Delightful for use all around the home.



MAGNOLIA

Like a Zen master, the Magnolia range instills a sense of the moment, and can be mixed and matched in a multitude of ways. Perfect for all around the home.





VASE
OPAL WHITE
28553 • 1076812
114 mm / 95 mm
4 1/2" / 3 3/4"



VASE
OPAL WHITE
28554 • 1076830
56 mm / 103 mm
2 1/4" / 4"



VASE
OPAL WHITE
28552 • 1076803
80 mm / 150 mm
3 1/4" / 6"



VASE
OPAL WHITE
28551 • 1076791
112.5 mm / 200 mm
4 1/2" / 7 3/4"



VASE
STEEL BLUE
28553 • 1076814
114 mm / 95 mm
4 1/2" / 3 3/4"



VASE
STEEL BLUE
28554 • 1076832
56 mm / 103 mm
2 1/4" / 4"



VASE
STEEL BLUE
28552 • 1076807
80 mm / 150 mm
3 1/4" / 6"



VASE
STEEL BLUE
28551 • 1076795
112.5 mm / 200 mm
4 1/2" / 7 3/4"



BOWL
BLACK
28394 • 1055534
310 mm / 74 mm
12 1/4" / 3"

MIDNIGHT

The bowl perfectly marries the masculine and feminine with their crisp rim and velvety curves. The bottom of each bowl slopes to a soft base, insinuating a lightness to the item, as if floating on air.



PENTAGON DESIGN



BOWL
28432 • 1075288
250 mm / 80 mm
13 3/4" / 2 1/4"



BOWL
28433 • 1075289
143 mm / 100 mm
5 3/4" / 4"



T A M E R N A K I Ş Ç I



*Tamer
Nakışçı*

M I S T





VASE
DUSTY ROSE
15556 • 1116250
205 * 110 mm / 290 mm
8 * 4 1/4" / 11 1/2"



VASE
DUSTY ROSE
15557 • 1116252
280 * 140 mm / 380 mm
11 * 5 1/2" / 15"



VASE
DUSTY ROSE
15558 • 1116254
270 * 100 mm / 210 mm
10 3/4 * 4" / 8 1/4"



VASE
CAMEL
15556 • 1101315
205 * 110 mm / 290 mm
8 * 4 1/4" / 11 1/2"



VASE
CAMEL
15557 • 1101322
280 * 140 mm / 380 mm
11 * 5 1/2" / 15"



VASE
CAMEL
15558 • 1101326
270 * 100 mm / 210 mm
10 3/4 * 4" / 8 1/4"



VASE
CLEAR
15556 • 1075319
205 * 110 mm / 290 mm
8 * 4 1/4" / 11 1/2"



VASE
CLEAR
15557 • 1075320
280 * 140 mm / 380 mm
11 * 5 1/2" / 15"



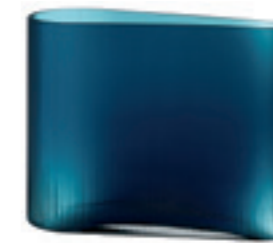
VASE
CLEAR
15558 • 1075321
270 * 100 mm / 210 mm
10 3/4 * 4" / 8 1/4"



VASE
PETROLEUM GREEN
15556 • 1101313
205 * 110 mm / 290 mm
8 * 4 1/4" / 11 1/2"



VASE
PETROLEUM GREEN
15557 • 1101317
280 * 140 mm / 380 mm
11 * 5 1/2" / 15"



VASE
PETROLEUM GREEN
15558 • 1101324
270 * 100 mm / 210 mm
10 3/4 * 4" / 8 1/4"

MIST

From the designer Tamer Nakışçı, this trio of vases are made in an extraordinary clear yet corrugated glass. The rippled effect creates an optical illusion, reflecting the different colours of the contents in an almost magical way. Flowers particularly are beautifully presented in these vases, the undulation blurring the stems, bringing into focus the colour of the petals.



MIST

The wider versions are also suited to storing newspapers, books or magazines. Simple but unique, these items work perfectly both in a domestic and professional environment.





TEALIGHT HOLDER
DUSTY ROSE
38591 • 1116576
70 * 75 mm / 107 mm
2 3/4 * 3" / 4 1/4"



TEALIGHT HOLDER
DUSTY ROSE
38441 • 1116577
93 * 100 mm / 141 mm
3 3/4 * 4" / 5 1/2"



TEALIGHT HOLDER
CLEAR
38591 • 1116575
70 * 75 mm / 107 mm
2 3/4 * 3" / 4 1/4"



TEALIGHT HOLDER
CLEAR
38441 • 1107884
93 * 100 mm / 141 mm
3 3/4 * 4" / 5 1/2"

MIST LIGHTS

A new addition to the Mist universe. Because light comes in waves. Inspired by the beauty of the light. Night & Day. The name "Lights" primarily stands for the light & fire, but also for all the little things that you can do with your new glass pieces. Like serving grapes in them, or making a special place for your jewelry. Bringing the Mist experience into a new scale, inviting people to take a closer look and discover new innovative uses. Pushing the glass material into daily use through new scenarios. Mist Lights collection is offering a new perspective on how magical a candle holder can be by focusing on the optical illusions of the piece and creating dreamy worlds with it.





VASE
OPAL GREY
28350 • 1055588
250 * 250 mm / 228 mm
9 3/4 * 9 3/4" / 9"



VASE
BLUE
28350 • 1055595
250 * 250 mm / 228 mm
9 3/4 * 9 3/4" / 9"



VASE
OPAL GREY
28351 • 1055590
215 * 215 mm / 197 mm
8 1/2 * 8 1/2" / 7 3/4"



VASE
BLUE
28351 • 1055598
215 * 215 mm / 197 mm
8 1/2 * 8 1/2" / 7 3/4"



LIDDED VESSEL
SMOKE
92426 • 1050696
90 mm / 90 mm
3 1/2" / 3 1/2"



LIDDED VESSEL
OPAL WHITE
92426 • 1050695
90 mm / 90 mm
3 1/2" / 3 1/2"



LIDDED VESSEL
CARAMEL
92426 • 1101353
90 mm / 90 mm
3 1/2" / 3 1/2"



VASE
CLEAR
28352 • 1055591
185 * 185 mm / 163 mm
7 1/4 * 7 1/4" / 6 1/2"



VASE
CLEAR
28353 • 1055593
155 * 155 mm / 133 mm
6 * 6" / 5 1/4"



VASE
OPAL GREY
28353 • 1055594
155 * 155 mm / 133 mm
6 * 6" / 5 1/4"



VASE
BLUE
28353 • 1055604
155 * 155 mm / 133 mm
6 * 6" / 5 1/4"



LIDDED VESSEL
CARAMEL
92356 • 1101347
150 mm / 150 mm
6" / 6"



LIDDED VESSEL
OPAL PINK
92356 • 1050703
150 mm / 150 mm
6" / 6"



LIDDED VESSEL
CLEAR
92356 • 1027133
150 mm / 150 mm
6" / 6"

MONO BOX

NEST

MONO BOX

A large family of vases, the glass Mono Boxes' simplicity allows maximum enjoyment of whatever you choose to put in them. Whether an aquarium, an array of stones, or desert plants, the clarity of the surface brilliantly enhances the contents. The larger vases in blue feel almost liquid. An art piece in themselves, they can also be employed for multiple uses, such as a punch bowl or an ice bucket. The more modest sized vases are perfect for fruit or candies. The smallest in the range is wonderful for all manner of items: jewellery, makeup, tissues, cotton wool. They make a perfect gift, not only for others but yourself. The ones in opal grey work brilliantly on an office desk. As a receptacle for business cards, USB sticks, paper clips, rubber bands, they are a simple way of clearing clutter, while at the same time, making a stylish statement.



NEST

A candy box to store anything or nothing at all, such is its beauty. It comes in two sizes, allowing it to be used both as a decorative and utility item. The lid is perfectly formed and drops neatly into place, protecting the contents from prying hands but enabling easy removal when the urge for a treat becomes overwhelming. The Nest is available in five soft yet distinct colours: smoke, opal white, caramel, opal pink and clear.





DEFNE KOZ



VASE
CLEAR
38230 • 1107351
197 * 182 mm / 138 mm
7 3/4 * 7 1/4" / 5 1/2"



VASE
CLEAR
38231 • 1107353
200 * 178 mm / 242.5 mm
7 3/4 * 7" / 9 1/2"



BOWL
CLEAR
38232 • 1107355
305 mm / 98 mm
12" / 3 3/4"



VASE
SMOKED GREEN
38230 • 1107352
197 * 182 mm / 138 mm
7 3/4 * 7 1/4" / 5 1/2"



VASE
SMOKED GREEN
38231 • 1107354
200 * 178 mm / 242.5 mm
7 3/4 * 7" / 9 1/2"



BOWL
SMOKED GREEN
38232 • 1107356
305 mm / 98 mm
12" / 3 3/4"

OPTI

OPTI

The Opti vases and centerpiece offer a hypnotic contrast of soft curves and subtle fluting, wearing only the gentlest of vertical ripples around the body of each piece. This implied plasticity stands in contrast to the rims, which are cut flat and not tapered. The collection will be available in clear and green.





BOWL
SMOKE
28366 • 1075385
258.5 mm / 57 mm
10 1/4" / 2 1/4"

**STAMP**

The corresponding smoked bowls suit both the home and professional environment. A brilliant receptacle also for keys, wallets, and other sundry items, they are great additions for the kitchen counter or the hallway.



VASE
OPAL PINK
28367 • 1076992
125 * 125 mm / 200 mm
5 * 5" / 7 3/4"



VASE
OPAL PINK
28368 • 1076988
120 * 160 mm / 240 mm
4 3/4 * 6 1/4" / 9 1/2"



VASE
OPAL PINK
28369 • 1076989
320 * 170 mm / 270 mm
12 1/2 * 6 3/4" / 10 3/4"

SWEETS

Exquisite, minimal, feminine, and sensual. Sweets is a set of three vases quintessentially FARAMA. In a delicate brushed pink and resting on a gloss white base (which also acts as a tray), these vases are both striking and blissful. Perfect for bathrooms and bedrooms, their luxurious surface invites you to touch, so softly curved is the sandblasted texture. The colour is iridescent, at once soothing yet simple. Cleverly designed for a single-stemmed flower, the Sweet vase brilliantly lives up to its name.



L I F E S T Y L E

A C C E S S O R I E S





TERRARIUM
CLEAR
15479 • 1050536
 226 mm / 340 mm
 9" / 13 1/2"



MINI TERRARIUM
CLEAR
15531 • 1055234
 128.5 mm / 200 mm
 5" / 7 3/4"



CANDLE HOLDER
CLEAR
92606 • 1075367
 93 mm / 135 mm
 3 3/4" / 5 1/4"



CANDLE HOLDER
SMOKE
92606 • 1075368
 93 mm / 135 mm
 3 3/4" / 5 1/4"



CANDLE HOLDER
GREY
92606 • 1075369
 93 mm / 135 mm
 3 3/4" / 5 1/4"

EDEN

The Eden that comes in two sizes is an exquisitely manufactured glass terrarium - a miniature garden. Lying atop a bowl of moulded concrete (is a substance that lies at the heart of the FARAMA ethos, being that it is simple yet graphically strong), the Eden can be used for planting all year round. For those less green-fingered, it also makes a beautiful candle feature for both indoors and out. A solid yet dynamic candle holder, its base is weighted for stability, making a perfect container for a candle or potted plant. The top half of the candle holder lifts off for ease of access, resting elegantly on a subtly grooved rim. Curved towards its opening, the glass is transparent, allowing for both air and light while protecting the contents from external elements.



MIRROR
SMOKED GREEN
28225 • 1050509
 200 mm / 295.5 mm
 7 3/4" / 11 3/4"

MOON

An immaculately created blown-glass hand mirror eloquently resting on a circular oak stand. The glass comes in green, its surface softly brushed, its weight carefully calibrated. The simplicity of the design ensures focus and remains purely on the mirror's reflection.



JEWELLERY BOX
SMOKED GREEN
28223 • 1050507
 130 mm / 210 mm
 5" / 8 1/4"



JEWELLERY BOX
CLEAR
28223 • 1050426
 130 mm / 210 mm
 5" / 8 1/4"

BLOSSOM

A simple jewellery tree made from oak, set within a pure glass surround in either clear or green. The design cleverly enhances the jewellery, the contrast between the organic and the hand-crafted, both charming and practical. Reminiscent of a birdcage, the soft curve of the dome beautifully sets off the sparkle of necklaces, bracelets and rings.





CIGAR ASHTRAY
CLEAR
24356 • 1049318
 150 mm / 35 mm
 6" / 1 1/2"



CIGAR ASHTRAY
BLACK
24356 • 1050746
 150 mm / 35 mm
 6" / 1 1/2"



CIGAR ASHTRAY
CLEAR
24357 • 1049316
 130 * 180 mm / 40 mm
 5 * 7" / 1 1/2"



CIGAR ASHTRAY
BLACK
24357 • 1050742
 130 * 180 mm / 40 mm
 5 * 7" / 1 1/2"

ALTRUIST

Built of solid glass and with the placement grooves facing each other, this is an ashtray to be shared, an ashtray that engenders discussion, a sharing of ideas, or late night attempts at putting the world to right. It comes in clear glass or black, reflecting the smoker's personality.



EGOIST

For those who prefer a life untroubled by other people's points of view, the Egoist is the answer. Ingeniously formed in solid glass, it sits perfectly in the palm of your hand, yet can also be rested on any surface. Offered in transparent clear or black, the Egoist is a must-have for the solitary smoker.



PEN TRAY
25652 • 1107920
 120 * 200 mm / 42 mm
 4 3/4 * 7 3/4" / 1 3/4"



CIGAR ASHTRAY
25651 • 1107918
 161 mm / 42 mm
 6 1/4" / 1 3/4"



CIGAR ASHTRAY
24421 - 1091092
 160 mm / 65 mm
 6 1/4" / 2 1/2"

ACE

Inspired from the golf club and golf ball's unique texture, Ace is a delightful set consisting of four bold items. A cigar ashtray, a pen holder and high/lowball glasses. A perfect gift for golf lovers, reflecting FARAMA artisanal quality in lead-free crystalline.



SHADE





CIGAR ASHTRAY
24997 • 1116617
160 mm / 43 mm
6 1/4" / 1 3/4"



ASHTRAY
13505 • 1116044
100 mm / 55 mm
4" / 2 1/4"



CIGAR ASHTRAY
25401 • 1076954
101 * 147 mm / 55 mm
4 * 5 3/4" / 2 1/2"



CIGAR ASHTRAY
24278 • 1086216
117 * 164 mm / 25 mm
4 1/2 * 6 1/2" / 1"



FUMO

FUMO

Fumo is a solid piece of crystal clear glass, heavy and demonstrative, smooth to the touch. It's a personal ashtray, perfectly sized to sit on an armrest or side table. The bowl of the tray itself precludes any chance of ash being spilled. The deep groove leads from the bowl to the edge, wide enough to sustain the most Robusto of cigars. For the dashingly provocative woman, or the solidly stable man, the Fumo is a wonderful gift, and a beautiful adornment to any room.





CANDLE HOLDER
CLEAR
38601 • 1199469
 180 mm / 282 mm
 7" / 11"



CANDLE HOLDER
CLEAR
38602 • 1199452
 140 mm / 212 mm
 5 1/2" / 8 1/4"



TEALIGHT HOLDER
CLEAR
38603 • 1199453
 100 mm / 63.5 mm
 4" / 2 1/2"



SET OF 2 VOTIVES
CLEAR
28414 • 1055897
 81 mm / 64 mm
 3 1/4" / 2 1/2"



SET OF 2 VOTIVES
SMOKE
28414 • 1055900
 81 mm / 64 mm
 3 1/4" / 2 1/2"



SET OF 2 VOTIVES
BLUE
28414 • 1075481
 81 mm / 64 mm
 3 1/4" / 2 1/2"



SET OF 2 VOTIVES
CLEAR
28415 • 1055904
 100 mm / 80 mm
 4" / 3 1/4"



SET OF 2 VOTIVES
SMOKE
28415 • 1055907
 100 mm / 80 mm
 4" / 3 1/4"



SET OF 2 VOTIVES
BLUE
28415 • 1075483
 100 mm / 80 mm
 4" / 3 1/4"

ILO

ILO

Ilo is a set of 3 different sized candle holders, owning a sculptural look that brings a mesmerising ambience with its dome inspired structure. Different sizes of Ilo from pillar to tealight candle holders can be adapted to any setting from in or outdoor, suitable for cold winter nights or long summer nights. The combination of the handcrafted crystalline rippled glass of FARAMA with the silky looking copper plate lets the candlelight twinkle and reflect with a playful optic effect, in your space.



JOY

JOY

Delightful to touch, they are bold and precise. And while providing both light and warmth, they are almost guaranteed to provoke conversation.





SET OF 2
VOTIVES

RED

28414 • 1055899

81 mm / 64 mm

3 1/4" / 2 1/2"



SET OF 2
VOTIVES

AMBER

28414 • 1055898

81 mm / 64 mm

3 1/4" / 2 1/2"



SET OF 2
VOTIVES

RED

28415 • 1055906

100 mm / 80 mm

4" / 3 1/4"



SET OF 2
VOTIVES

TURQUOISE

28415 • 1055909

100 mm / 80 mm

4" / 3 1/4"



SET OF 2
VOTIVES

AMBER

28415 • 1055905

100 mm / 80 mm

4" / 3 1/4"



JOY



*Ayşe Birsel
Bibi Seck*

P A R O L E S P A R O L E S

WHY NOT

BEEF

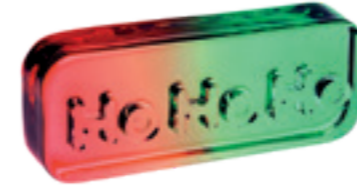
YOLO

BRAVO

NAMASTE



CHRISTMAS EDITION



PAPERWEIGHT
RED - GREEN
25532 • 1116620
164 * 64 mm / 40 mm
6 1/2 * 2 1/2" / 1 1/2"



PAPERWEIGHT
CLEAR
25533 • 1116621
164 * 64 mm / 40 mm
6 1/2 * 2 1/2" / 1 1/2"



PAPERWEIGHT
CLEAR
25516 • 1108212
164 * 64 mm / 40 mm
6 1/2 * 2 1/2" / 1 1/2"



PAPERWEIGHT
CLEAR
25512 • 1108208
164 * 64 mm / 40 mm
6 1/2 * 2 1/2" / 1 1/2"



PAPERWEIGHT
CLEAR
25518 • 1108214
164 * 64 mm / 40 mm
6 1/2 * 2 1/2" / 1 1/2"



PAPERWEIGHT
CLEAR
25510 • 1108206
164 * 64 mm / 40 mm
6 1/2 * 2 1/2" / 1 1/2"



PAPERWEIGHT
CLEAR
25514 • 1108210
164 * 64 mm / 40 mm
6 1/2 * 2 1/2" / 1 1/2"

PAROLES PAROLES

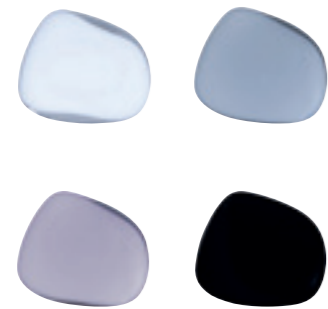
Paroles Paroles Collection is a family of paperweights expressing words that matter at work. "BRAVO" is to remind you that you're doing great; "RELAX" is a little encouragement to go easy on yourself; "WHY NOT" is to inspire you to think outside of the box and so on. The collection started with BRAVO. A gift was needed to give to friends and collaborators to celebrate their efforts and success. You often send an email or call people to say "Bravo!", but it is very fleeting. It doesn't stay. Something lasting was wanted, something that you can have on your desk every day to remind you that your great work is being recognized. After "BRAVO", we imagined other unique feelings and sentiments we wanted to gift to others, and with that, the collection grew to include more of these sentiments—BFF (Best Friends Forever), YOLO (You Only Live Once), WHY NOT. Together with "NAMASTE" (I bow to you), each one of them is meant to make someone in your life happy! For holiday season, get "HoHoHo" to spread good cheer.



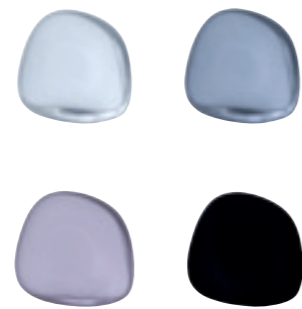
PAROLES PAROLES PAROLES PAROLES



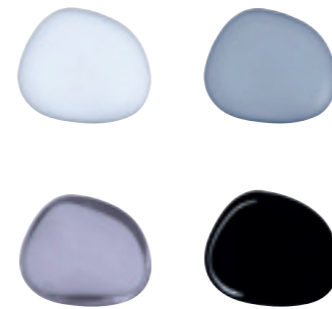
PEBBLES



HANGER / KNOB
 OPAL WHITE • OPAL GREY
 OPAL PINK • BLACK
 28408 • 1075193 • 1075196
 1075202 • 1075206
 97 * 116 mm / 45 mm
 3 3/4 * 4 1/2" / 1 3/4"



HANGER / KNOB
 OPAL WHITE • OPAL GREY
 OPAL PINK • BLACK
 28409 • 1075211 • 1075215
 1075219 • 1075241
 84.5 * 84 mm / 45 mm
 3 1/4 * 3 1/4" / 1 3/4"



HANGER / KNOB
 OPAL WHITE • OPAL GREY
 OPAL PINK • BLACK
 28410 • 1075246 • 1075250
 1075254 • 1075258
 71.5 / 77.5 mm / 45 mm
 2 3/4 * 3" / 1 3/4"



ORCHID POT
 OPAL PINK & OPAL WHITE
 92492 • 1050836
 180 mm / 215 mm
 7" / 8 1/2"



ORCHID POT
 SMOKE & OPAL WHITE
 92492 • 1050837
 180 mm / 215 mm
 7" / 8 1/2"

ROOTS

PEBBLES

A decorative dish in opal white, opal lila, opal gray and black with a softly edged rim. The shape is both organic and fluid, echoing nature and a sense of the sea. Can be used flat, or as a decorative piece hanging (from a door handle or peg). Reversible, it can also be employed as a paperweight or as a place marker. A delightful thing that adds character to any space, the different varieties of Pebbles mean they can be mixed to create an environment of your own choosing.



ROOTS

FARAMA have created a portable herb garden for your kitchen. Sitting on a concrete base, the two colored crystalline pots use a hydroponic system to irrigate the plants. Perfect for a kitchen top or windowsill, the Roots garden makes a wonderful gift, promising the fabulous aroma of fresh herbs all year round.



L I F E S T Y L E

L I G H T I N G





TOMAS KRAL

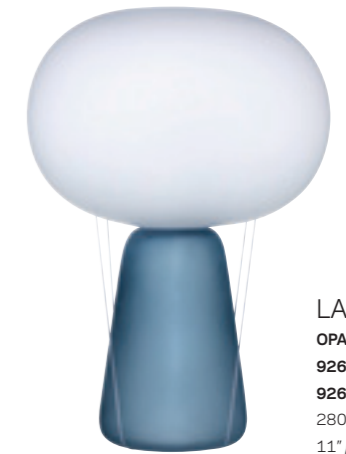
GLASS IS TOMORROW



LAMP
OPAL WHITE
 92600 • 1076963
 92600 • 1082436
 280 mm / 402 mm
 11" / 8 + 7 3/4"



LAMP
OPAL PINK
 92600 • 1076964
 92600 • 1082437
 280 mm / 402 mm
 11" / 8 + 7 3/4"



LAMP
OPAL BLUE
 92600 • 1076965
 92600 • 1082438
 280 mm / 402 mm
 11" / 8 + 7 3/4"

BLOW



An extraordinary and original piece created by the Swiss-based and award-winning designer Tomas Kral. "The two parts of the lamp are assembled together by simple rubber bands which refer to the top of a hot-air balloon. This minimal connection creates a tension sufficient to maintain the stability of the lamp, and also allows quick disassembly for changing the bulb." Light and airy, the lamp, though sturdy, seems to float.

FARMA DESIGN TEAM



LAMP
CLEAR
 15477 • 1050515
 15477 • 1082424
 328 mm / 265 mm
 13" / 10 1/2"



LAMP
SMOKE
 15477 • 1076922
 15477 • 1082425
 328 mm / 265 mm
 13" / 10 1/2"



LAMP
OPAL WHITE
 15477 • 1076923
 15477 • 1082426
 328 mm / 265 mm
 13" / 10 1/2"

MIRA



For a slightly softer look, the Mira lamp opens out like a ballgown, sending a wider beam of light. Incorporating the same concrete socket of its brother lamp, the Mira maintains an air of simplicity while still offering fantastic personality and style.

BLOW

MIRA



LAMP
CLEAR
15476 • 1050513
15476 • 1082427
310 mm / 334 mm
12 1/4" / 13 1/4"



LAMP
OPAL WHITE
15476 • 1076919
15476 • 1082429
310 mm / 334 mm
12 1/4" / 13 1/4"



LAMP
SMOKE
15476 • 1076918
15476 • 1082428
310 mm / 334 mm
12 1/4" / 13 1/4"



LAMP
SMOKE
15586 • 1086024
15586 • 1095988
220 mm / 226 mm
8 3/4" / 9"



LAMP
SMOKE
15566 • 1076820
15566 • 1082430
387 mm / 254 mm
15 1/4" / 10"



LAMP
SMOKE
15567 • 1076824
15567 • 1082431
196 mm / 405 mm
7 3/4" / 16"

MONO

MONO

A superb lamp, minimal in design yet strong in attitude, the Mono is made from blown unworked glass. Determinedly non-ornamental, it retains a strong sense of style, its concrete socket working in perfect balance with the simplicity of the glass itself. Embodying loft living, the Mono is a stunning centrepiece for any room.



E R D E M A K A N



*Erdem
Akkan*

O R I O N





SIDE LAMP
15478 • 1050517
15478 • 1082423
 320 mm / 320 mm
 12 1/2" / 12 1/2"



SIDE LAMP
15478 • 1064373
15478 • 1082422
 320 mm / 320 mm
 12 1/2" / 12 1/2"

ORION

A truly dramatic addition to any room, the Orion night light is an extraordinary piece of design. Essentially simple in its make-up, the crystal glass shade resting on a solid concrete base hails back to the Sci-Fi movies of the 1950s. The brushed surface running across the top of the glass means the light is diffused across the room, providing a soft and soothing glow perfect for bedrooms or any relaxing space.



BEDROOM LAMP
CLEAR
15459 • 1049716
15459 • 1082420
 228 mm / 263 mm
 9" / 10 1/4"



BEDROOM LAMP
SMOKED GREEN
15459 • 1050511
15459 • 1082421
 228 mm / 263 mm
 9" / 10 1/4"

TREE

A clear or green glass night lamp set on an ingenious oak base. The soft curves of the shade are both homely and inviting, the light creating a soft glow around the room. The sympathetic combination of glass and wood suggests both nature and nurture.



LAMP
15570 • 1076913
15570 • 1082432
 205 mm / 240 mm
 8" / 9 1/2"



SMOOTH

The Smooth bedside lamp is comforting, minimal, soft, and unobtrusive. Its space-age design emits a warm glow, the feel of the lamp organic, the textures tactile. The main shade itself is made of opaque glass, contrasting effectively with the slate stone base, the matt and gloss finishes acting in harmony. Such is the skill of FARAMA glassblowers, the density of the light gently changes as it hits different areas of the lamp. The Smooth is an endlessly fascinating thing, dreamy yet practical, simple yet unique.



DRINKWARE & SERVEWARE

Z E R O





RED WINE GLASS
32253 • 1107766
720 cc / 216 mm
24 1/4 oz / 8 1/2"



WHITE WINE GLASS
32261 • 1116028
400 cc / 201 mm
13 1/2 oz / 8"



SET OF 2 GLASSES
22609 • 1107948
470 cc / 115 mm
16 oz / 4 1/2"



RED WINE GLASS
32258 • 1107966
500 cc / 223 mm
17 oz / 8 3/4"



WHITE WINE GLASS
32252 • 1107765
410 cc / 208 mm
13 3/4 oz / 8 1/4"



CHAMPAGNE GLASS
32260 • 1116024
233 cc / 228 mm
7 3/4 oz / 9"



SET OF 2 GLASSES
22608 • 1107946
480 cc / 114 mm
16 1/4 oz / 4 1/2"



GHOST ZERO / BELLY

GHOST ZERO / TULIP

S T E M Z E R O

L I G H T
S T R O N G
E L E G A N T





RED WINE GLASS
32306 • 1116553
32306 • 1116554 (Set of 2)
 800 cc / 270 mm
 27 oz / 10 3/4"



WHITE WINE GLASS
32307 • 1116609
32307 • 1116610 (Set of 2)
 630 cc / 250 mm
 21 1/4 oz / 9 3/4"



SPARKLING WINE GLASS
32308 • 1116614
32308 • 1116615 (Set of 2)
 445 cc / 269 mm
 15 oz / 10 1/2"



RED WINE GLASS
32019 • 1101740
32019 • 1101729 (Set of 2)
 1000 cc / 249 mm
 33 3/4 oz / 9 3/4"



WHITE WINE GLASS
32020 • 1101741
32020 • 1101730 (Set of 2)
 700 cc / 236 mm
 23 3/4 oz / 9 1/4"



CHAMPAGNE GLASS
32021 • 1101742
32021 • 1101731 (Set of 2)
 300 cc / 260 mm
 10 1/4 oz / 10 1/4"



SET OF 2 GLASSES
22602 • 1107882
 550 cc / 114 mm
 18 1/2 oz / 4 1/2"



STEM ZERO / GRACE



FARAMA Stem Zero / Grace glasses reinterpret the traditional wine glass, offering an impressive design employing sharper and elegant lines. Grace also incorporates FARAMA well-known elements of clarity, strength and lightness, allowing wine to be enjoyed at the very highest level. Embracing a classic sense of sophistication, Grace is refined, natural and glamorous, much like the inspirational movie star herself...

STEM ZERO / VOLCANO



Stem Zero is a simple and elegant range of highly sophisticated glassware made to satisfy the most discerning wine connoisseur. The glass is so fine and so light that it defies belief. Such is the remarkable quality of the glass that it creates a sensation of weightlessness, that the wine is being held by an invisible force, allowing you to savour the aroma and taste of wine in a way that, until now, was considered unimaginable.

STEM ZERO / GRACE

STEM ZERO / VOLCANO



**MASTER
GLASS**
32160 • 1107268
32160 • 1107269 (Set of 2)
 420 cc / 220 mm
 14 1/4 oz / 8 3/4"

STEM ZERO / MASTER



Like a master key used to open any lock, the Master Glass can be used to drink any type of wine wherever you may be. Dining out or tasting with friends, the connoisseur need no longer rely on the choice of glasses available -or not available- in a pinch. When tasting at home, the specially shaped Stem Zero glasses are each ideal for drinking either delicate or full-bodied whites, elegant or powerful reds or champagne. The Master Glass, however, has been hand-crafted in a single shape that represents the optimal compromise for drinking any wine, anywhere.



**RED WINE
GLASS**
32249 • 1107723
32249 • 1116036 (Set of 2)
 510 cc / 237.5 mm
 17 1/4 oz / 9 1/4"



**WHITE WINE
GLASS**
32248 • 1107721
32248 • 1116035 (Set of 2)
 420 cc / 227 mm
 14 1/4 oz / 9"



**CHAMPAGNE
GLASS**
32250 • 1107725
32250 • 1116037 (Set of 2)
 285 cc / 235 mm
 9 3/4 oz / 9 1/4"

STEM ZERO / TRIO





ELEGANT RED WINE GLASS (L)
32016 • 1101737
32016 • 1101726 (Set of 2)
 950 cc / 237 mm
 32 1/4 oz / 9 1/4"



ELEGANT RED WINE GLASS (M)
32017 • 1101738
32017 • 1101727 (Set of 2)
 650 cc / 225 mm
 22 oz / 8 3/4"



FULL BODIED WHITE WINE GLASS
32027 • 1101744
32027 • 1101733 (Set of 2)
 750 cc / 199 mm
 25 1/4 oz / 7 3/4"



CHAMPAGNE GRAND CRU GLASS
32030 • 1101746
32030 • 1101735 (Set of 2)
 450 cc / 242 mm
 15 1/4 oz / 9 1/2"



POWERFUL RED WINE GLASS
32024 • 1101743
32024 • 1101732 (Set of 2)
 550 cc / 237 mm
 18 1/2 oz / 9 1/2"



DELICATE WHITE WINE GLASS
32029 • 1101745
32029 • 1101734 (Set of 2)
 450 cc / 229.5 mm
 15 1/4 oz / 9"



CHAMPAGNE GLASS
32018 • 1101739
32018 • 1101728 (Set of 2)
 300 cc / 257 mm
 10 1/4 oz / 9"



SET OF 2 GLASSES
22365 • 1101736
 450 cc / 115 mm
 15 1/4 oz / 4 1/2"

STEM ZERO / VERTIGO



The lightness of the glassware focuses all attention on the senses. The stem is precise, the lip gossamer-thin, the bowl delicate. Everything works to accentuate touch, taste and smell.



DRINKWARE & SERVEWARE

W I N E





WINE
DECANTER
28206 • 1050501
1000 cc / 217 mm / 245 mm
33 3/4 oz / 8 1/2" / 9 3/4"



WINE
DECANTER
28206 • 1075163
1000 cc / 217 mm / 245 mm
33 3/4 oz / 8 1/2" / 9 3/4"



SET OF 2
WINE GLASSES
12783 • 1057839
350 cc / 115 mm
11 3/4 oz / 4 1/2"



MAGNUM
WINE
DECANTER
BLACK
28196 • 1050526
4000 cc / 202 mm / 350 mm
135 1/4 oz / 8" / 13 3/4"

BALANCE

The Balance decanter and matching set of glasses have been ingeniously designed to remain stable while revolving. This proves an irresistible effect, the swirl of the liquid reflecting the energy in a room. The way the glass turns on its axis feels playful and seductive in equal measure, while also gently aerating the liquid. A guaranteed conversation piece.



CANTINA

A big beast of a decanter, this is a hugely impressive item guaranteed to turn heads at any party or gathering. In black or clear lead-free crystal, the Cantina holds a full Magnum of wine. Named after the wineries in Italy and Spain, the Cantina is a must for all festive occasions, bringing joy and delight to family and friends.



CLIMATS



SET OF 2
RED WINE
GLASSES
66074 • 1080173
640 cc / 245 mm
21 3/4 oz / 9 3/4"



SET OF 2
RED WINE
GLASSES
66076 • 1081357
500 cc / 230 mm
17 oz / 9"



SET OF 2
WHITE WINE
GLASSES
66072 • 1080174
390 cc / 215 mm
13 1/4 oz / 8 1/2"

CLIMATS



Three deceptively simple wine glasses, the Climats range is brilliantly adaptable for both formal and relaxed occasions. Including a fuller bodied glass for bigger red wines, a slimmer glass for rosé, and a medium glass for whites, each item is perfectly balanced with a fine stem and sturdy base. The lip of the glass is crisp and defined, narrowly tapering towards the brim in order to capture the fullness of the wine's aromas. These are a set of glasses you will want to use again and again.

CONTOUR



CARAFE
28436 • 1076517
2300 cc / 60 mm / 250 mm
81 oz / 2 1/4" / 9 3/4"



SET OF 2
WINE
GLASSES
22266 • 1076519
360 cc / 128 mm
12 3/4 oz / 5"

CONTOUR



The wine glass and decanter, while echoing the spirit of the original Contour collection, have a sandblasted base, frosting the glass which, in the decanter's case, is semi-translucent.



RON ARAD



LIMITED EDITION

WINE DECANTER
28216 • 1049628
750 cc / 265 mm / 250 mm
25 1/4 oz / 10 1/2" / 9 3/4"

DECANTERING

DECANTERING

As someone once said: "Wine is just a conversation waiting to happen," and it is in that spirit the DecanteRing exists. A symmetrical cylinder of perfectly-blown glass, this beautiful artefact enables the wine to breathe properly, while letting light and movement play around the liquid, a constant reminder of its intoxicating properties. The degree of craftsmanship involved is extraordinary, the glass cut and polished to perfection.



FANTASY



SET OF 2
ALL PURPOSE
GLASSES
66199 • 1080745
770 cc / 270 mm
26 oz / 10 3/4"



SET OF 2
COCKTAIL
GLASSES
66130 • 1080743
675 cc / 235 mm
22 3/4 oz / 9 1/4"



SET OF 2
CHAMPAGNE
GLASSES
66160 • 1081361
290 cc / 270 mm
9 3/4 oz / 10 3/4"



SET OF 2
COGNAC
GLASSES
66103 • 1081355
870 cc / 175 mm
29 1/2 oz / 7"



SET OF 2
RED WINE
GLASSES
31963 • 1075160
740 cc / 230 mm
25 oz / 9"



SET OF 2
WHITE WINE
GLASSES
31962 • 1075158
480 cc / 215 mm
16 1/4 oz / 8 1/2"



SET OF 2
CHAMPAGNE
GLASSES
31964 • 1075162
240 cc / 250 mm
8 oz / 9 3/4"

HEADS UP

FANTASY

A set of five elegant and thin-stemmed glasses. Exquisitely fashioned, the glasses are soft and bulbous, allowing the liquid to breathe, before tapering to a crisp rim for a highly-refined and enjoyable drinking experience. Perfect for a special occasion, the Fantasy collection will imbue any cocktail or dinner party with a sense of panache, the delicate designs bringing high-style to any gathering.



HEADS UP

Heads Up collection is designed by the always stylish Englishman Nigel Coates. The selection, like the designer himself, is confident, charming, yet eminently usable. The handblown tumbler is cleverly ridged, almost inviting the user to hold it in their hand. The wine glasses are also extremely tactile. The champagne glass is as charming as a cocktail dress and demands to be admired. At once playful yet refined, Heads Up is a marvellously individual and memorable range. The British designer Nigel Coates is renowned for his elegance and style. But like all the best Englishmen, he also possesses a wry sense of humour. His Heads Up collection, especially designed for FARAMA, incorporates all of those elements.





JAZZ
 CLEAR
 38607 • 1201891
 2300 cc / 188 mm / 343 mm
 77 3/4 oz / 7 1/2" / 13 1/2"

JAZZ

JAZZ



Jazz carafe pushes the boundaries of handcrafted production by combining impeccable craftsmanship and exceptional aesthetics. Thanks to its fine structure paired with an elegant and flowing shape, the carafe complements the wine with its natural form. The focus of the design is the wine's journey from the carafe to the glass. Jazz carafe's light and thin composition allows wine lovers to feel the entire weight of the wine and its journey in the carafe, while its ergonomic structure provides an easy grip. The carafe's thin mouth and light structure allow for comfortable use.



WINE
CARAFE
92670 - 1086044
850 cc / 113 mm / 266 mm
28 3/4 oz / 4 1/2" / 10 1/2"



SET OF 2
RED WINE
GLASSES
31994 - 1086018
180 cc / 134 mm
6 oz / 5 1/4"



SET OF 2
WHITE
WINE GLASSES
31993 - 1086016
150 cc / 128 mm
5 oz / 5"

JOUR

Jour is a collection of wine glasses and a wine carafe. The essential shape of the wine glasses is square, but they widen towards the brim, the lip gently softened and curved outwards, providing a delicate contrast to the straight lines. The longer red wine glass is bisected by a delicate ridge, providing a subtle yet characterful feature. The decanter is a solid and reassuring piece of design, echoing the same lines of the glasses, and with a solid glass stopper.





SET OF 2
RED WINE
GLASSES
66078 • 1202714
790 cc / 217 mm
26 3/4 oz / 8 1/2"



SET OF 2
RED WINE
GLASSES
66093 • 1052466
570 cc / 207 mm
19 1/4 oz / 8 1/4"



SET OF 2
WHITE WINE
GLASSES
66092 • 1052465
425 cc / 198 mm
14 1/4 oz / 7 3/4"



SET OF 2
CHAMPAGNE
GLASSES
66091 • 1052464
245 cc / 238 mm
8 1/4 oz / 9 1/4"



SET OF 4
HIGHBALL
GLASSES
64003 • 1052141
480 cc / 154 mm
16 1/4 oz / 6"



SET OF 4
LONG DRINK
GLASSES
64002 • 1052140
330 cc / 140 mm
11 1/4 oz / 5 1/2"



SET OF 4
WHISKY
GLASSES
64001 • 1052139
385 cc / 82 mm
13 oz / 3 1/4"

MIRAGE



Simple yet distinguished, Mirage is a machine-tooled range covering the most requested type of glasses. Each one is precision-made and perfectly weighted. The glasses themselves angle slightly towards the rim, giving a distinctive look to the collection. A perfect starter set for new homes, and a wonderful wedding present.



SET OF 2
CHAMPAGNE
GLASSES
31971 • 1076993
175 cc / 212 mm
6 oz / 8 1/4"



SET OF 2
WINE
GLASSES
31972 • 1076994
320 cc / 180 mm
10 3/4 oz / 7"



SET OF 2
LONG DRINK
GLASSES
22286 • 1076995
530 cc / 120 mm
18 oz / 4 3/4"



SET OF 2
WHISKY
GLASSES
22287 • 1076996
380 cc / 90 mm
12 3/4 oz / 3 1/2"



SET OF 2
GLASSES
22288 • 1076997
260 cc / 60 mm
8 3/4 oz / 2 1/4"

NEO

A set of five items in clear crystal glass, the Neo range includes two well-balanced glasses, one for long drinks, the other for whisky. There is also a long-stemmed champagne glass, and a crisply-defined wine glass. To complete the set, FARAMA has created a matching mini bowl, perfect for tapas, nuts or dips. Each item is gently flared outwards towards the rim, the glass softly-bevelled, creating a pleasant sensation in the hand, while at the same time softly refracting the light.



WINE CARAFE
28656 • 1091394
3200 cc / 196 mm / 300 mm
108 1/4 oz / 7 3/4" / 11 3/4"



WINE CARAFE
28725 • 1091089
1750 cc / 156 mm / 240 mm
59 1/4 oz / 6 1/4" / 9 1/2"

O₂

The O₂ carafes are solid wide-bottomed decanters made from the highest quality crystal glass. The glass has been delicately moulded with a series of dramatic intersecting perpendicular lines, creating a sense of depth and character. The bottom of the carafes are softly domed, letting light into the base of the item.



FARAMA DESIGN TEAM



WINE DECANTER
CLEAR
16025 • 140882
1750 cc / 226 mm / 270 mm
59 1/4 oz / 9" / 10 3/4"

OXYGEN

The Oxygen decanter, in clear glass, 1750 cc (holding two bottles of wine) is perfect for family gatherings or parties. The playful circular cork stopper with a modern edge is deftly imprinted with the FARAMA logo.





SET OF 4
BOURGOGNE
GLASSES
64026 • 1052143
710 cc / 114 mm
24 oz / 4 1/2"



SET OF 4
BORDEAUX
GLASSES
64025 • 1052144
610 cc / 120 mm
20 3/4 oz / 4 3/4"



SET OF 4
WHITE WINE
GLASSES
64090 • 1052467
390 cc / 105 mm
13 1/4 oz / 4 1/4"



SET OF 4
SWEETS &
SPIRITS GLASSES
64089 • 1052468
250 cc / 92 mm
8 1/2 oz / 3 1/2"

PURE

PURE



A range of exquisitely simple wine tumblers. Classically stylish, these can be used for both informal and formal affairs. Designed to appeal to a less traditional consumer, the Pure's zen-like tone works perfectly when it comes to a more relaxed decor and lifestyle. The glasses also feel wonderful in the hand.



**WINE
DECANTER**
28297 • 1050736
2100 cc / 127 mm / 333 mm
71 oz / 5" / 13"



**WATER
CARAFE**
28288 • 1049939
1300 cc / 97 mm / 335 mm
44 oz / 3 3/4" / 13 1/4"



**SET OF 2
WINE GLASSES**
31877 • 1049612
450 cc / 232 mm
15 1/4 oz / 9 1/4"



**SET OF 2
WATER GLASSES**
31878 • 1049619
450 cc / 156 mm
15 1/4 oz / 6 1/4"



**SET OF 2
RED WINE
GLASSES**
67092 • 1080824
610 cc / 235 mm
20 3/4 oz / 9 1/4"



**SET OF 2
BURGUNDY
GLASSES**
67093 • 1080826
625 cc / 226.5 mm
21 1/4 oz / 9"



**SET OF 2
RED WINE
GLASSES**
67316 • 1112659
530 cc / 223.5 mm
18 oz / 8 3/4"



**SET OF 2
POLYVALENT
GLASSES**
67091 • 1080828
440 cc / 214 mm
15 oz / 8 1/2"



**SET OF 2
WHITE WINE
GLASSES**
67090 • 1080830
320 cc / 190 mm
10 3/4 oz / 7 1/2"



**SET OF 2
CHAMPAGNE
GLASSES**
67094 • 1080832
200 cc / 225 mm
6 3/4 oz / 8 3/4"

RED OR WHITE

REFINE

RED OR WHITE

A flirtatious range including a decanter, a carafe and two glasses. The way the glass leans mirrors the way people bend closer to hear a conversation or whisper a secret. The shape of the glass also makes reference to the tipsy-like state a party engenders. Also note the upside down wine glasses. No need to waste time when moving from white to red; a twist of the wrist and one can proceed uninterrupted.



REFINE

A set of six glasses, the Refine series is appropriate for all wines and champagnes. The red wine glass comes in two options -a narrow and wide body- perfect for both medium and full-flavoured wines. The white wine glass, like the red, is subtle in design, the lower curvature of the glass either softly rounded, or slightly more flattened for a more distinctive grip. The champagne glass tapers ever so gently towards the rim, trapping the flavours while enhancing the drinking experience.



ROUND UP



SET OF 2
RED WINE
GLASSES
32012 • 1116701
500 cc / 227 mm
17 oz / 9"



SET OF 2
WHITE WINE
GLASSES
32011 • 1116700
350 cc / 214 mm
11 3/4 oz / 8 1/2"



SET OF 2
COUPE
GLASSES
32010 • 1116699
400 cc / 154 mm
13 1/2 oz / 6"



SET OF 2
CHAMPAGNE
GLASSES
32007 • 1116698
200 cc / 253 mm
6 3/4 oz / 10"

ROUND UP

This unique glassware consists of four essential sizes. All items in this series have specially designed rounded bottom form to help the wine poured down smoothly and keeping the delicate bouquet and tasteful aromas. Our elegant Round Up collection enhances the color of wines with optic texture that makes the lead-free crystal even more brilliant.



TERROIR



SET OF 2
RED WINE
GLASSES
66095 • 1070878
670 cc / 230 mm
22 3/4 oz / 9"



SET OF 2
RED WINE
GLASSES
66096 • 1070877
590 cc / 218 mm
20 oz / 8 1/2"



SET OF 2
WHITE WINE
GLASSES
66097 • 1070876
360 cc / 206 mm
12 1/4 oz / 8"

TERROIR

A simple yet bold design including a dynamic drop in the stem of each glass intimating a sense of fluidity. The Terroir range is all about taste, each glass created specifically to embrace the quality of the wine. Made for the refined and knowledgeable wine lover.





CARAFE
38451 • 1116025
 1750 cc / 171 mm / 266 mm
 59 1/4 oz / 6 3/4" / 10 1/2"



CARAFE
38452 • 1116026
 1200 cc / 191 mm / 308 mm
 40 1/2 oz / 7 1/2" / 12 1/4"



VINI

Whatever the style setting, occasion or mood, there's a FARAMA Vini carafe to match. Each design is carefully handmade from our finest lead-free crystal and destined to impress - whether used to serve your favourite tippie or admired solo for its aesthetic value.



**SET OF 2
 RED WINE
 GLASSES**
66099 • 1070879
 790 cc / 250 mm
 26 3/4 oz / 9 3/4"



**SET OF 2
 WHITE WINE
 GLASSES**
66102 • 1080820
 360 cc / 210 mm
 12 1/4 oz / 8 1/4"



**SET OF 2
 CHAMPAGNE
 GLASSES**
66079 • 1070881
 245 cc / 250 mm
 8 1/4 oz / 9 3/4"

VINIFERA

A slightly bolder and more exotic range. The extraordinarily delicate stems support a deep and sensuous bowl, both enlivening the wine, while emphasising its aromatic potential. A range for the wine hedonist.





WINE DECANTER
29005 • 1086979
 750 cc / 147 mm / 230 mm
 25 1/4 oz / 5 3/4" / 9"



WINE DECANTER
28303 • 1050943
 750 cc / 150 mm / 242 mm
 25 1/4 oz / 6" / 9 1/2"



SET OF 2
 BOURDEAUX
 GLASSES
66125 • 1052487
 600 cc / 240 mm
 20 1/4 oz / 9 1/2"



SET OF 2
 POLYVALENT
 GLASSES
66122 • 1052483
 430 cc / 217 mm
 14 1/2 oz / 8 1/2"



SET OF 2
 BOURGOGNE
 BLANC GLASSES
66124 • 1052456
 550 cc / 200 mm
 18 1/2 oz / 7 3/4"



SET OF 2
 CHAMPAGNE
 GLASSES
66112 • 1052490
 220 cc / 242 mm
 7 1/2 oz / 9 1/2"



SET OF 2
 GRAND BOURGOGNE
 GLASSES
66127 • 1052486
 725 cc / 244 mm
 24 1/2 oz / 9 1/2"



SET OF 2
 ROSE WINE
 GLASSES
66113 • 1052489
 320 cc / 220 mm
 10 3/4 oz / 8 3/4"



SET OF 2
 COUPE
 GLASSES
66100 • 1080816
 185 cc / 160 mm
 6 1/4 oz / 6 1/4"



SET OF 2
 WATER
 GLASSES
66115 • 1052462
 310 cc / 136 mm
 10 1/2 oz / 5 1/4"

VINTAGE

VINTAGE

VINTAGE



FARAMA most comprehensive range: a glass for all seasons and for every occasion. You can be sure that, whatever the drink, the Vintage collection will provide the correct glass, ensuring a perfect experience every time.

VINTAGE





SET OF 2
RED WINE
GLASSES
31900 • 1050681
550 cc / 250 mm
18 1/2 oz / 9 3/4"



SET OF 2
WHITE WINE
GLASSES
31901 • 1050683
350 cc / 235 mm
11 3/4 oz / 9 1/4"



SET OF 2
CHAMPAGNE
GLASSES
31902 • 1050685
250 cc / 265 mm
8 1/2 oz / 10 1/2"

WINE PARTY

Ingenious, playful, intuitive and practical, the Wine Party range contains a series of glasses designed for the party experience. Their precisely-weighted stems allow them to be rested on surfaces, but also easily slipped into a pocket or purse. Hands are freed for more important purposes: greeting, rejecting, cajoling or gesticulating. For those reluctant to let go of their glass, the soft curve of the stem fits like a glove.



DRINKWARE & SERVEWARE

W H I S K Y & S P I R I T S



J O E D O U C E T



*Joe
Doucet*

A L B A





WHISKY CARAFE
28675 • 1086003
 1800 cc / 160 mm / 200 mm
 60 3/4 oz / 6 1/4" / 7 3/4"



SET OF 2 WHISKY GLASSES
22340 • 1082999
 260 cc / 87 mm
 8 3/4 oz / 3 1/2"



WHISKY CARAFE
28676 • 1116630
 1500 cc / 300 mm
 50 3/4 oz / 11 3/4"



SET OF 2 HIGHBALL GLASSES
22341 • 1086001
 390 cc / 120 mm
 13 1/4 oz / 4 3/4"



SET OF 2 LONG DRINK GLASSES
22607 • 1107916
 460 cc / 154 mm
 15 1/2 oz / 6"



SET OF 2 WHISKY GLASSES
22606 • 1107914
 350 cc / 94 mm
 11 3/4 oz / 3 3/4"

ACE



Inspired by the golf club and golf ball's unique texture, Ace is a delightful set consisting of four bold items: a cigar ashtray, a pen holder and high/lowball glasses. A perfect gift for golf lovers, reflecting FARAMA artisanal quality in lead-free crystalline.

ALI BAKOVA



BOWL
28266 • 1049744
 470 cc / 120 mm / 80 mm
 16 oz / 4 3/4" / 3 1/4"



SET OF 2 WHISKY GLASSES
22153 • 1049891
 300 cc / 90 mm
 10 1/4 oz / 3 1/2"



WHISKY BOTTLE
92572 • 1049901
 1000 cc / 130 mm / 195 mm
 33 3/4 oz / 5" / 7 3/4"

ALBA



'Alba' is Gaelic for Scotland. The collection pays tribute to the spiritual home of whisky. The elegant glasses are punctuated by a hand-engraved and cleverly deconstructed tartan pattern. Each glass is heavy-bottomed, and each carefully tapers towards the brim, holding in the subtle aromas. The decanters, also incorporating the ingenious tartan etching, are punctuated by a unique stopper which leans omni-directionally, inviting the more dedicated whisky lover to point the stopper in the direction of Scotland.

ARCH



A sophisticated yet witty piece of craftsmanship, the Arch whisky bottle, a set of two glasses, and a matching bowl are a group of perfectly balanced items that seem to defy logic but sit solidly on any surface. The subtle curvature of the glass base reflects the delightful swirl of a single malt, creating a sense of energy to an activity often perceived to be placid. The pieces have a subtle interlocking design that allows them to fit together imaginatively.



Youmeus

B I G T O P

Y O U M E U S





SET OF 4
WHISKY DOF
GLASSES
64122 • 1100884
270 cc / 80 mm
9 1/4 oz / 3 1/4"



SET OF 4
WHISKY DOF
GLASSES
64142 • 1100885
320 cc / 88 mm
10 3/4 oz / 3 1/2"



SET OF 2
COUPE
GLASSES
67306 • 1112790
235 cc / 151.5 mm
8 oz / 6"



SET OF 4
HIGHBALL
GLASSES
64132 • 1100887
300 cc / 145 mm
10 1/4 oz / 5 3/4"



SET OF 4
HIGHBALL
GLASSES
64152 • 1100888
340 cc / 161 mm
11 1/2 oz / 6 1/4"



SET OF 4
HIGHBALL
GLASSES
64162 • 1100886
430 cc / 175 mm
14 1/2 oz / 7"



SET OF 4
WHISKY
GLASSES
68124 • 1112775
270 cc / 84 mm
9 1/4 oz / 3 1/4"



SET OF 4
WHISKY
GLASSES
68394 • 1112655
325 cc / 91 mm
11 oz / 3 1/2"



SET OF 4
HIGHBALL
GLASSES
68134 • 1112774
450 cc / 170 mm
15 1/4 oz / 6 3/4"



SET OF 4
HIGHBALL
GLASSES
68033 • 1120032
285 cc / 151 mm
9 3/4 oz / 6"

BIG TOP

CALDERA

BIG TOP



The Big Top collection focuses on serving, and is built from a combination of quality materials and finishes. Each piece has been designed with an eye to the magical, delivering a joyful, sophisticated and showstopping experience.

CALDERA



With its lead-free crystal glass and playful design, Caldera Collection invites you to a different experience. The alluring swirl of the whisky and highball glasses which is presented with the unique V-form of the Caldera gives a classy and a dynamic impression. The presentation of the collection is now in a new level with the unsurpassed style of Caldera which also enables a dazzling optic effect with the vertical cuts around the glass.



WHISKY BOTTLE
92661 • 1082995
 1500 cc / 200 mm * 90 mm / 245 mm
 50 3/4 oz / 7 3/4 * 3 1/2" / 9 3/4"



DOF WHISKY GLASS
22331 • 1082996
 470 cc / 125 mm
 16 oz / 5"



SOF WHISKY GLASS
22330 • 1082997
 350 cc / 100 mm
 11 3/4 oz / 4"

CAMP

The 'Camp' collection consists of a decanter and two matching glasses. The glasses are beautifully styled, both heavy-bottomed and feel satisfying in the hand. The decanter has been designed to deliberately reflect a traditional hip flask, an item often passed around a roaring campfire. The integrated brass "X" coasters at the base of the items suggest the warmth emanating from burning logs, not dissimilar to the feeling one gets from tasting a great whisky. The decanter is finished with a solid glass stopper, sitting perfectly in the neck of the bottle. The result is a stylish and imaginative collection, full of character and originality.





reddot award 2017
winner



CARAFE
28742 • 1116674
1250 cc / 154 mm / 193 mm
42 1/4 oz / 6" / 7 1/2"



TUMBLER
22334 • 1116671
300 cc / 83 mm
10 1/4 oz / 3 1/4"



BOWL
28743 • 1116678
170 cc / 56 mm
5 3/4 oz / 2 1/4"



BOWL
28744 • 1116677
600 cc / 62 mm
20 1/4 oz / 2 1/2"

CHILL

CHILL

The Chill collection consists of a decanter with matching tumbler and two bowls. Elegantly smooth, they are made from the finest crystal glass. Glass elements sit on a base of high-quality marble, creating both a sense of weight and authority.





SET OF 4
WHISKY
GLASSES
64039 • 1052155
250 cc / 86 mm
8 1/2 oz / 3 1/2"



SET OF 4
HIGHBALL
GLASSES
64040 • 1052156
280 cc / 130 mm
9 1/2 oz / 5"



SET OF 4
HIGHBALL
GLASSES
64042 • 1052157
420 cc / 150 mm
14 1/4 oz / 6"

CLUB



The Club range remains clear. Both Club Ice and Club glasses are dramatically-carved, creating a ripple effect in the bottom of each glass which, when married with the ice, intensifies the visual experience.



SET OF 4
HIGHBALL
GLASSES
64040 • 1052168
280 cc / 130 mm
9 1/2 oz / 5"



SET OF 4
HIGHBALL
GLASSES
64042 • 1052169
420 cc / 150 mm
14 1/4 oz / 6"

CLUB ICE



The Club Ice range are sandblasted at the bottom, creating a frosted effect.



SET OF 4
HIGHBALL
GLASSES
64012 • 1052148
445 cc / 151 mm
15 oz / 6"



SET OF 4
LONG DRINK
GLASSES
64011 • 1052149
350 cc / 141 mm
11 3/4 oz / 5 1/2"



SET OF 4
WHISKY DOF
GLASSES
64010 • 1052147
390 cc / 88 mm
13 1/4 oz / 3 1/2"



SET OF 4
WHISKY SOF
GLASSES
64009 • 1052146
300 cc / 82 mm
10 1/4 oz / 3 1/4"



SET OF 4
SHOT
GLASSES
64008 • 1052145
60 cc / 70 mm
2 oz / 2 1/4"

FINESSE

The straight lines of the Finesse range are made to appeal to the minimalist. Strict in their simplicity, the glass is also extremely fine, providing a crisp and delicate drinking vessel, enhancing the flavour of any concoction. Finesse in name and nature.



SET OF 4
HIGHBALL
GLASSES
64012 • 1081354
445 cc / 151 mm
15 oz / 6"



SET OF 4
LONG DRINK
GLASSES
64011 • 1081353
350 cc / 141 mm
11 3/4 oz / 5 1/2"



SET OF 4
WHISKY DOF
GLASSES
64010 • 1081352
390 cc / 88 mm
13 1/4 oz / 3 1/2"



SET OF 4
WHISKY SOF
GLASSES
64009 • 1081351
300 cc / 82 mm
10 1/4 oz / 3 1/4"

FINESSE GRID

Eminently usable for all occasions both formal and relaxed, the Finesse collection mixes the modern and the classic in a casually-sophisticated way. The lines are crisp and carefully defined, the glass intricately etched with a latticed pattern, adding both texture and dimension to the items.



SET OF 4
STACKABLE
GLASSES
68070 • 1113509
300 cc / 109 mm
10 1/4 oz / 4 1/4"

GLAZZ

The inspiration for the Glazz stacking glasses comes simply from considering a way of stacking glasses that avoids all the usual problems like locking together, breaking or being damaged and scratched, which spoils the look and experience during use. The Glazz design avoids any of this damage to the surface of the glass when stacked, especially around the rim where you drink from. The result is a distinctive, reassuringly weighted glass that retains a crystal clear smooth finish and increases its lifespan.



NIGEL COATES



SET OF 2
WATER
GLASSES
22253 • 1075156
465 cc / 120 mm
15 3/4 oz / 4 3/4"



SET OF 2
WHISKY
GLASSES
22302 • 1076892
470 cc / 90 mm
16 oz / 3 1/2"

GLASS IS
TOMORROW

HEADS UP



FARMA DESIGN TEAM



SET OF 4
HIGHBALL
GLASSES
68003 • 1052150
310 cc / 155 mm
10 1/2 oz / 6"



SET OF 4
WHISKY DOF
GLASSES
68002 • 1052151
330 cc / 91 mm
11 1/4 oz / 3 1/2"

HEMINGWAY



B R A D A S C A L O N



*Brad
Ascalon*

H E P B U R N





HEPBURN



MIXING GLASS WITH METAL STIRRER
68279 • 1100878
 650 cc / 96.5 mm / 190 mm
 22 oz / 3 3/4" / 7 1/2"



SHAKER WITH METAL TOP
68060 • 1100896
 500 cc / 88.8 mm - 96 mm
 161 mm - 255 mm
 17 oz / 3 1/2 - 3 3/4"
 6 1/4 - 10"



ALCHEMY GLASS
22692 • 1116530
 275 cc / 122.5 mm
 9 1/4 oz / 4 3/4"



SET OF 4 LOWBALL GLASSES
64082 • 1100879
 380 cc / 94 mm
 12 3/4 oz / 3 3/4"



SET OF 4 LONG DRINK GLASSES
64080 • 1100881
 425 cc / 155 mm
 14 1/4 oz / 6"



SET OF 2 COUPE GLASSES
67104 • 1100880
 195 cc / 170 mm
 6 1/2 oz / 6 3/4"

HEPBURN

Elegant, tailored, playful and nuanced, by gently weighting the bottom, Brad Ascalon adds both stability and a sense of authority to each piece. Dressed with sensuous but understated brass-like attachments and accessories, the HEPBURN collection is exquisitely stylish, like its namesake.





FARMA DESIGN TEAM



SET OF 4
HIGHBALL
GLASSES
64144 • 1068636
340 cc / 180 mm
11 1/2 oz / 7"



SET OF 4
WHISKY DOF
GLASSES
64220 • 1068634
370 cc / 100 mm
12 1/2 oz / 4"

HIGHLANDS



Gently widening as they near the lip, the Highland range of glasses are big, weighty and profound. The wider brim allows for a fuller appreciation of the drink's aroma, the bottom thick and solid as befits the needs of any whisky connoisseur.

FARMA DESIGN TEAM

NEW



SET OF 2
WHISKY
GLASSES
32342 • 1203962
205 cc / 108 mm
7 oz / 4 1/4"



SET OF 2
WHISKY
GLASSES
32165 • 1108088
205 cc / 206 mm
7 oz / 8"



SET OF 2
WHISKY
GLASSES
32155 • 1108089
170 cc / 218 mm
5 3/4 oz / 8 1/2"

ISLANDS



With their slightly flared lip, the whisky glasses direct the spirit's flow to the tip of the tongue, emphasizing their smooth, silken feel in the mouth. Meanwhile, the broad bowl of the glass, tapering toward the top, concentrates the liquid's aroma and flavors, optimizing the sensory experience.

HIGHLANDS
ISLANDS

MIKKO LAAKKONEN



*Mikko
Laakkonen*

M A L T





MIKKO LAAKKONEN



WHISKY BOTTLE
92785 • 1107143
 1050 cc / 100 mm / 238 mm
 35 1/2 oz / 4" / 9 1/4"



SET OF 2 WHISKY GLASSES
22303 • 1076933
 260 cc / 80 mm
 8 3/4 oz / 3 1/4"



WHISKY BOTTLE
92632 • 1076908
 1100 cc / 115 mm / 185 mm
 37 1/4 oz / 4 1/2" / 7 1/4"



SET OF 2 BOWLS
28542 • 1076931
 330 cc / 61 mm
 11 1/4 oz / 2 1/2"

M A L T

MALT

The Malt whisky set by Finnish designer Mikko Laakkonen is a stunning group of four. Laakkonen, an award-winning furniture designer, is known for unique and imaginative products, always insisting they are appropriate for everyday use. The Malt whisky set holds fast to his ideals, offering simplicity and beauty, yet complete practicality. In doing so, it also represents the essence of FARAMA.





WHISKY BOTTLE
92926 • 1107757
 750 cc / 115 * 155 mm / 183 mm
 25 1/4 oz / 4 1/2 * 6" / 7 1/4"



SET OF 2 WHISKY GLASSES
22610 • 1107964
 300 cc / 106 mm
 10 1/4 oz / 4 1/4"



WHISKY BOTTLE
92634 • 1116672
 1250 cc / 132 mm / 190 mm
 42 1/4 oz / 5 1/4" / 7 1/2"



SET OF 2 WHISKY GLASSES
22208 • 1116450
 350 cc / 104 mm
 11 3/4 oz / 4"



SET OF 2 HIGHBALL GLASSES
12110 • 1116679
 280 cc / 160 mm
 9 1/2 oz / 6 1/4"



SET OF 2 LOWBALL GLASSES
12009 • 1116683
 230 cc / 130 mm
 7 3/4 oz / 5"

MEMENTO MORI



NO.9

The name suggests mystery, but the glass is designed for someone who knows their liquor. Perfect for any spirit, these are a must-have for any serious drinker. Heavy-bottomed, feel substantial in the hand, each glass precision-sculpted to create a perfect pyramid inside its base. Dramatic and authoritative, it is modern and sleek. The No.9 decanter is a superb combination of masculine power and female elegance. Or perhaps it's the other way around! Either way, it's a sensational addition to any living room, an item to be cherished for years to come.





WHISKY BOTTLE
92881 • 1116437
 1000 cc / 118 mm / 260 mm
 33 3/4 oz / 4 3/4" / 10 1/4"



SET OF 2 WHISKY DOF GLASSES
22690 • 1116438
 370 cc / 91 mm
 12 1/2 oz / 3 1/2"



SET OF 2 WHISKY SOF GLASSES
22691 • 1116439
 280 cc / 85 mm
 9 1/2 oz / 3 1/4"

P A R I S

PARIS



Paris is a handmade whisky collection made of crystalline glass, its design inspired by the Eiffel Tower, one of the great symbols of Paris. It offers an extraordinary drinking experience anywhere and anytime. Gently tapering from its heavily-weighted base towards the mouth, the glass captures aromas superbly. This balance between a heavy base and slim body result in a design that offers elegance as well as value, much like the Eiffel Tower itself. The specially-designed surface at the bottom of the glass also allows for beautiful handmade engravings. Paris is simple, elegant, and modern. In short, like FARAMA itself.



REMY SAVAGE



SET OF 4
WATER
GLASSES

64172 • 1112787
260 cc / 81.5 mm
8 3/4 oz / 3 1/4"



SET OF 4
LOWBALL
GLASSES

64154 • 1112641
295 cc / 77 mm
10 oz / 3"



SET OF 4
HIGHBALL
GLASSES

64135 • 1112639
330 cc / 146 mm
11 1/4 oz / 5 3/4"



SET OF 2
PONY
GLASSES

67276 • 1112792
135 cc / 165 mm
4 1/2 oz / 6 1/2"



SET OF 2
COUPETINI
GLASSES

67286 • 1112794
170 cc / 166 mm
5 3/4 oz / 6 1/2"



SET OF 2
COUPE
GLASSES

67296 • 1112796
220 cc / 174 mm
7 1/2 oz / 6 3/4"

S
A
V
A
G
E

SAVAGE



The Savage cocktail suite creates a link between the past and the future. It is designed with the perfect shapes and more accurate capacities to highlight both classic drinks and signature cocktails of modern mixologists. Made from lead-free crystal, this cocktail glass range combines mixologist and philosopher Remy Savage with his deep understanding of the modern era cocktail crafting combined with FARAMA style of simplicity and purity. Together it is intertwining aesthetic, functionality and durability so that each item is perfectly made to enhance the savour of the drink as well as the experience of crafting it.

SHADE



WHISKY BOTTLE
92633 • 1116676
 1250 cc / 132 mm / 291 mm
 42 1/4 oz / 5 1/4" / 11 1/2"



SET OF 2 WHISKY GLASSES
22299 • 1116451
 350 cc / 104 mm
 11 3/4 oz / 4"



SET OF 2 HIGHBALL GLASSES
22301 • 1116680
 345 cc / 160 mm
 11 3/4 oz / 6 1/4"



SET OF 2 LOWBALL GLASSES
22300 • 1116686
 290 cc / 130 mm
 9 3/4 oz / 5"



SHADE

Intentionally dramatic and showstopping pieces made of clear crystal glass, the Shade whisky set will appeal to all those with a sense of the Gothic and romantic. The skull shaped stopper of decanter guarantees to add an air of the theatrical to any table or sideboard. The corresponding trio of shot glasses and tumbler are finished with an embedded image of a skull in their base.

VINTAGE



SET OF 2 MARTINI GLASSES
66114 • 1052459
 290 cc / 185 mm
 9 3/4 oz / 7 1/4"



SET OF 2 MARTINI GLASSES
67012 • 1052142
 190 cc / 183 mm
 6 1/2 oz / 7 1/4"



SET OF 2 MARGARITA GLASSES
66120 • 1052458
 400 cc / 182 mm
 13 1/2 oz / 7 1/4"



SET OF 2 GIN TONIC GLASSES
66300 • 1080822
 585 cc / 180 mm
 19 3/4 oz / 7"



SET OF 2 GRAPPA GLASSES
66111 • 1052460
 110 cc / 210 mm
 3 3/4 oz / 8 1/4"



SET OF 2 GRAPPA GLASSES
66110 • 1052488
 88 cc / 174 mm
 3 oz / 6 3/4"



SET OF 2 BEER GLASSES
66121 • 1052461
 410 cc / 161 mm
 13 3/4 oz / 6 1/4"



SET OF 2 COGNAC GLASSES
66123 • 1052491
 500 cc / 132 mm
 11 1/4 oz / 4 1/4"



SET OF 4 WHISKY GLASSES
64160 • 1080748
 330 cc / 108.5 mm
 17 oz / 5 1/4"



VINTAGE



SET OF 4
WHISKY
GLASSES
68174 • 1100883
250 cc / 89 mm
8 1/2 oz / 3 1/2"



SET OF 4
WHISKY
GLASSES
68184 • 1100891
330 cc / 97 mm
11 1/4 oz / 3 3/4"



SET OF 4
HIGHBALL
GLASSES
68164 • 1100893
250 cc / 135 mm
8 1/2 oz / 5 1/4"



SET OF 4
HIGHBALL
GLASSES
68194 • 1100895
360 cc / 157 mm
12 1/4 oz / 6 1/4"

W A Y N E

WAYNE



The Wayne series consists of drinking glasses designed to underscore the aesthetic purity and radiance of crystalline glass. Each piece features a variety of reflections created by bold vertical scoring, equivalent to crisp pleats in a dress shirt. A horizontal channel at the bottom of each glass deepens the luminosity of each. Meanwhile, it clearly distinguishes the upper and lower elements of the objects and enriches the occasional overlay of cuts and reflections that are visible in different combinations at different angles.

DRINKWARE & SERVEWARE

B E V E R A G E S





SET OF 2
ESPRESSO
GLASSES

22289 • 1076974

125 cc / 89 mm

4 1/4 oz / 3 1/2"

ADDICT

A simple yet stylish coffee glass, the Addict is perfectly balanced with a smooth rim and a strong yet easy to grip glass-blown handle. The glass is at once refined yet robust, much like the flavour of the coffee it helps to enhance. Its simple lines, delicately tapering form, widening to rest on a solid base, offers both sophistication and style. It is a discerning glass for similarly discerning coffee drinkers.



ALI BAKOVA



SET OF 2
LONG DRINK
GLASSES

BLUE

22256 • 1075342

450 cc / 120 mm

15 1/4 oz / 4 3/4"



SET OF 2
WATER
GLASSES

BLUE

22267 • 1075346

330 cc / 80 mm

11 1/4 oz / 3 1/4"



SET OF 2
LONG DRINK
GLASSES

CLEAR

22256 • 1076990

450 cc / 120 mm

15 1/4 oz / 4 3/4"



SET OF 2
WATER
GLASSES

CLEAR

22267 • 1076991

330 cc / 80 mm

11 1/4 oz / 3 1/4"

BARDUCK

An original line of glassware created by award-winning Turkish designer Ali Bakova, the range begins with a highball glass for mixed drinks. The shorter version makes a perfect tumbler. Funkier than its brother, it feels solid in the hand, but still offers a radical and imaginative option.





Iris Apfel



CARAFE
RED PAINTING
28782 • 1107088
1000 cc / 109.5 mm / 280 mm
33 3/4 oz / 4 1/4" / 11"



SET OF 2 GLASSES
YELLOW & BLUE PAINTING
92780 • 1107087
350 cc / 114 mm
11 3/4 oz / 4 1/2"



SET OF 2 GLASSES
CLEAR
22374 • 1091930
350 cc / 114 mm
11 3/4 oz / 4 1/2"



SET OF 2 GLASSES
SMOKE
22374 • 1091934
350 cc / 114 mm
11 3/4 oz / 4 1/2"



WATER CARAFE
CLEAR
28782 • 1091937
1000 cc / 109.5 mm / 280 mm
33 3/4 oz / 4 1/4" / 11"



WATER CARAFE
SMOKE
28782 • 1091940
1000 cc / 109.5 mm / 280 mm
33 3/4 oz / 4 1/4" / 11"



CARAFE
CLEAR
28781 • 1091929
1400 cc / 159 mm / 250 mm
47 1/4 oz / 6 1/4" / 9 3/4"

BEAK

BEAK

BEAK



For Tomas Kral, Iris Apfel is a fashion icon with a very colorful and feminine style. In his Beak project redesigned for the Iris Apfel inspired collection, he wanted to play with this two points: feminine elegance & colorful approach. Realized together with the glassblowers of the FARAMA Glass Company, his idea of this project was to explore different skills & techniques of working with glass material such cutting & color painting. This by using them in a simple, refined & playful way. Using these traditional techniques, he decided to dress his carafes. With a touch of finesse and subtlety, he drew them graphic necklaces and highlighted some parts of their bodies by adding them color. He used the paint as if it were lipstick and he painted in color the edges of his carafes and tumblers.

BEAK



A witty trio of items, the Beak collection consists of carafes, one taller than the other, and a matching geometrically designed tumbler. Both carafes are tall necked with a beak-like spout. Perfect for beach houses and urban settings.



FARMA DESIGN TEAM



SET OF 4
GLASSES
AMBER
12925 • 1116049
400 cc / 122 mm
13 1/2 oz / 4 3/4"



SET OF 4
GLASSES
SMOKE
12925 • 1116050
400 cc / 122 mm
13 1/2 oz / 4 3/4"



SET OF 4
GLASSES
GREEN TURQUOISE
12925 • 1116051
400 cc / 122 mm
13 1/2 oz / 4 3/4"



SET OF 4
GLASSES
BURGUNDY
12925 • 1116196
400 cc / 122 mm
13 1/2 oz / 4 3/4"

COLORED O



FARMA DESIGN TEAM



SET OF 4
GLASSES
AMBER
22360 • 1107070
440 cc / 110 mm
15 oz / 4 1/4"



SET OF 4
GLASSES
CARAMEL
22360 • 1107071
440 cc / 110 mm
15 oz / 4 1/4"



SET OF 4
GLASSES
PETROLEUM GREEN
22360 • 1107072
440 cc / 110 mm
15 oz / 4 1/4"

COLORED U



A range of funky tumblers in beautiful stained glass. The colours are classy and subtle, and can be used to dramatically enhance any table. Heavy-bottomed with a tapered rim, they feel great in the hand and are adaptable to a multitude of uses.



SET OF 2
ESPRESSO
GLASSES
31975 • 1076977
95 cc / 93 mm
3 1/4 oz / 3 3/4"

DELIZIA



SET OF 2
ESPRESSO
GLASSES
22298 • 1076816
55-100 cc / 121 mm
1 3/4 oz - 3 1/2 oz / 4 3/4"

DUAL



JUG WITH COVER
28423 • 1027124
1000 cc / 88 mm / 280 mm
33 3/4 oz / 3 1/2" / 11"



JUG WITH COVER
28423 • 1050738
1000 cc / 88 mm / 280 mm
33 3/4 oz / 3 1/2" / 11"

FINESSE

Quintessentially FARAMA, these are two tall yet minimal clear glass jugs with a heavily-weighted base. Simple yet elegant, they need never leave the table, but because of their brilliant design, they also fit perfectly into the door of a refrigerator, keeping the contents refreshingly cool. An opaque grey or pink glass lid rests on top, protecting the contents from any unwanted odours.



HEMINGWAY
JOUR



JUG
68010 • 1052152
1000 cc / 137 mm / 209 mm
33 3/4 oz / 5 1/2" / 8 1/4"

HEMINGWAY



INGA SEMPÉ



WATER JUG
28677 • 1086008
1350 cc / 115 mm / 243 mm
45 3/4 oz / 4 1/2" / 9 1/2"



SET OF 2 GLASSES
22343 • 1086014
350 cc / 129 mm
11 3/4 oz / 5"



SET OF 2 GLASSES
22342 • 1086012
230 cc / 105 mm
7 3/4 oz / 4 1/4"

JOUR



SET OF 2 TUMBLERS
CLEAR
22505 • 1107264
290 cc / 95 mm
9 3/4 oz / 3 3/4"



SET OF 2 TUMBLERS
STEEL BLUE
22505 • 1107266
290 cc / 95 mm
9 3/4 oz / 3 3/4"



WATER CARAFE
CLEAR
28783 • 1091943
1000 cc / 113 mm / 247.5 mm
33 3/4 oz / 4 1/2" / 9 3/4"



WATER CARAFE
OPAL WHITE
28783 • 1091946
1000 cc / 113 mm / 247.5 mm
33 3/4 oz / 4 1/2" / 9 3/4"



WATER CARAFE
STEEL BLUE
28783 • 1091949
1000 cc / 113 mm / 247.5 mm
33 3/4 oz / 4 1/2" / 9 3/4"

LADY

An elegant carafe, the Lady collection is inspired by the elegant collar and pleated folds of a dress worn by a royal queen. The rim of the carafe is delicately ruffled.



ERDEM AKAN

*Erdem
Akan*

M R . & M R S .





NIGHT SET
SMOKED GREEN
92547 • 1050718
 850 cc - 250 cc / 110 mm / 200 mm
 28 3/4 oz - 8 1/2 oz / 4 1/4" / 7 3/4"



NIGHT SET
DUSTY ROSE
92547 • 1116288
 850 cc - 250 cc / 110 mm / 200 mm
 28 3/4 oz - 8 1/2 oz / 4 1/4" / 7 3/4"



NIGHT SET
CLEAR
92547 • 1049889
 850 cc - 250 cc / 110 mm / 200 mm
 28 3/4 oz - 8 1/2 oz / 4 1/4" / 7 3/4"



NIGHT SET
SMOKED GREEN
92546 • 1050709
 700 cc - 170 cc / 89 mm / 235 mm
 23 3/4 oz - 5 3/4 oz / 3 1/2" / 9 1/4"



NIGHT SET
DUSTY ROSE
92546 • 1116287
 700 cc - 170 cc / 89 mm / 235 mm
 23 3/4 oz - 5 3/4 oz / 3 1/2" / 9 1/4"



NIGHT SET
CLEAR
92546 • 1049882
 700 cc - 170 cc / 89 mm / 235 mm
 23 3/4 oz - 5 3/4 oz / 3 1/2" / 9 1/4"

M R . & M R S .

MR. & MRS.

An amusing pair of matching water jugs with integrated mouth-blown glass cups in clear, green or dusty rose. The cups, decorated with a sleeping and blinking face, also work as a stopper, helping to keep the contents of the jug fresh.





reddot award 2018
winner

P A R R O T



SET OF 2
WATER
GLASSES

CLEAR
22387 • 1116682
240 cc / 100 mm
8 oz / 4"



SET OF 2
WATER
GLASSES

SMOKE
22387 • 1116681
240 cc / 100 mm
8 oz / 4"



SET OF 2
WATER
GLASSES

STEEL BLUE
22387 • 1116684
240 cc / 100 mm
8 oz / 4"



WATER
CARAFE

CLEAR
28808 • 1116687
750 cc / 97 mm / 250 mm
25 1/4 oz / 3 3/4" / 9 3/4"



WATER
CARAFE

SMOKE
28808 • 1116685
750 cc / 97 mm / 250 mm
25 1/4 oz / 3 3/4" / 9 3/4"



WATER
CARAFE

STEEL BLUE
28808 • 1116688
750 cc / 97 mm / 250 mm
25 1/4 oz / 3 3/4" / 9 3/4"

PARROT

This playful carafe and tumbler set wear their functionality as their decoration. Cuts made by hand, as well as hand-painting, in the neck indicate where to hold the object and help to increase one's grip when it is heavy with liquid.



STUDIO FORMAFANTASMA



*Studio
Formafantasma*

P I G M E N T O





CARAFE
BEIGE
28844 • 1098757
 620 cc / 155 mm / 238 mm
 21 oz / 6" / 9 1/4"



CARAFE
PINK
28844 • 1098758
 620 cc / 155 mm / 238 mm
 21 oz / 6" / 9 1/4"

P I G M E N T O

PIGMENTO

Studio FormaFantasma emphasizes the manual genius and honor the traces left by the artisan's hand during the crafting of their tableware. Pigmento reinterprets a traditional hand-making technique used to add hue to glass in the process of mouthblowing an object, an intuitive process that generates a different result every time. Through the milky material, amorphous accents of colourful pigments are blown, smoke-like, emphasizing the serendipity and uniqueness of each piece.





WATER BOTTLE
CLEAR
28224 • 1050428
700 cc / 89 mm / 297 mm
23 3/4 oz / 3 1/2" / 11 3/4"



WATER BOTTLE
SMOKED GREEN
28224 • 1050731
700 cc / 89 mm / 297 mm
23 3/4 oz / 3 1/2" / 11 3/4"



SET OF 2 WATER GLASSES
CLEAR
22201 • 1049680
200 cc / 85 mm
6 3/4 oz / 3 1/4"



SET OF 2 WATER GLASSES
SMOKED GREEN
22201 • 1050733
200 cc / 85 mm
6 3/4 oz / 3 1/4"

POEM

Continuing the theme of synchronicity, FARAMA offers stylish matching water bottles and set of glasses in either clear or green. The glass is ribbed, almost like corduroy, creating an extraordinary tactile experience when held in the hand. The narrowing at the top of the glass also helps keep liquid cool. A stunning adornment to any table.



ALI BAKOVA



WATER CARAFE
CLEAR
28244 • 1050524
660 cc / 102 mm / 285 mm
22 1/4 oz / 4" / 11 1/4"



SET OF 2 WATER GLASSES
CLEAR
22200 • 1050675
250 cc / 105 mm
8 1/2 oz / 4 1/4"



WATER CARAFE
SMOKE
91252 • 1049914
660 - 250 cc / 102 mm / 300 mm
22 1/4 - 8 1/2 oz / 4" / 11 3/4"

RHYTHM

A smoke water carafe and a clear carafe matched with a set of two glasses. The bottle comes with its own cork stopper, but the glasses can also be used as a lid. Each bottle can be offered to a guest individually, creating an imaginative touch to their dining experience.



GLASS IS TOMORROW



SET OF 2 WATER GLASSES
SMOKE
22238 • 1075380
387 cc / 146 mm
13 oz / 5 3/4"



SET OF 2 WATER GLASSES
SMOKE
22237 • 1075374
270 cc / 96.5 mm
9 1/4 oz / 3 3/4"

STAMP

The mood is intentionally confident and strong. Yet there is also a sense of elegance to the range, the smoked glass both is moody and dramatic. Their bases are rounded in order to feel irresistible in the hand. They are big statements, and a gift bound to be appreciated by serious thinkers.



DRINKWARE & SERVEWARE

S E R V I N G





SET OF 2
SERVING
PLATES

25369 • 1050857
90 * 165 mm / 10 mm
3 1/2 * 6 1/2" / 1 1/2"

AMOUR



ALEJANDRO RUIZ



BUTTER CUP
38594 • 1050523
172 mm / 67 mm
6 3/4" / 2 3/4"



SQUEEZER
24110 • 1050673
56 mm / 105 mm
2 1/4" / 4 1/4"



FUNNEL
13463 • 1050676
111 mm / 108 mm
4 1/4" / 4 1/4"



SPOON REST
25354 • 1015936
147 * 102 mm / 55 mm
5 3/4 * 4" / 2 1/4"

CRUET





CAKE STAND WITH DOME
92910 • 1108758
330 mm / 282 mm
13" / 11"



ICE CREAM CUP
32220 • 1108763
120 mm / 80 mm
4 3/4" / 3 1/2"



CANDY BOX
92912 • 1108767
115 mm / 93 mm
6" / 3 3/4"



B L O O M





DOME WITH SLATE
28106 • 1056479
 200 mm / 360 mm
 7 3/4" / 14 1/4"

FROMAGE

A handblown dome of perfectly clear glass, the Fromage makes a stunning table display. Sitting on a circular slate base, the glass is formed like a giant teardrop allowing air to circulate around the contents. A small vent ingeniously blown into the glass also prevents food from 'sweating'. As the domes are all handblown, not one of them is exactly the same.



CHAMPAGNE COOLER
28233 • 1050341
 286 mm / 300 mm
 11 1/4" / 11 3/4"

WINE COOLER
16579 • 1050735
 210 mm / 220 mm
 8 1/4" / 8 3/4"

ICE BOX
28232 • 1050325
 133.5 mm / 140 mm
 5 1/4" / 5 1/4"

GLACIER

A trio of glass ice buckets appropriate for every occasion. Purchased separately, the largest of the three is a champagne cooler that can hold a magnum. The second is a white wine cooler. The third and smallest is perfect for solo-bottles, or keeping ice ready for cocktails. Each bucket is decorated with a pair of hand-pressed dimples that not only make each item a one-off, but also makes it easier to hold.



ICE BUCKET
68308 • 1052160
 183 * 143 mm / 154 mm
 7 1/4 * 5 3/4" / 6"

HEMINGWAY

A neat set comprising of jug, ice bucket, highball glasses, and whisky glasses. Can be purchased together or separately. In homage to the great American writer, the glass is bevelled, rugged in the hand, and possesses a deep and solid bottom. Perfect for long evenings watching the sun go down.





ICE CREAM CUP
24323 • 1116675
 90 * 90 mm / 60 mm
 3 1/2 * 3 1/2" / 2 1/4"



ICE CREAM CUP
25368 • 1116673
 77 * 181 mm / 41 mm
 3 * 7 1/4" / 1 1/2"

ICE CUBE

Made to resemble blocks of frozen water, they make perfect serving receptacles for ice cream or amuse-bouches. When not dining, they also work brilliantly as holders for tealights. In fact, their use is only limited by your imagination.



OIL AND VINEGAR
28226 • 1050303
 225 cc / 100 mm / 115 mm
 7 1/2 oz / 4" / 4 1/2"



OIL AND VINEGAR
92548 • 1050308
 225 cc / 100 mm / 115 mm
 7 1/2 oz / 4" / 4 1/2"



SAUCE BOWL
28227 • 1050309
 225 cc / 100 mm / 115 mm
 7 1/2 oz / 4" / 4 1/2"

OLEA

A delightful set of pourers that can be purchased together or separately. The Olea range consists of two oil and vinegar pourers -one with a pipette, one with a stopper- and a small sauce jug, the latter designed with a gentle lip at its brim. Despite appearing to rest at an angle, these clear glass containers are perfectly balanced, their design cleverly reflecting their use.



PENTAGON DESIGN



OIL AND VINEGAR
92566 • 1049750
 300 cc / 102 mm / 184 mm
 10 1/4 oz / 4" / 7 1/4"



WATER CARAFE
92565 • 1049749
 1000 cc / 127 mm / 290 mm
 33 3/4 oz / 5" / 11 1/2"



CARAFE
92564 • 1049748
 1200 cc / 175 mm / 273 mm
 40 1/2 oz / 7" / 10 3/4"

TILT

The Tilt family of carafe, water jug and oil & vinegar bottle is a handsome collection made for the kitchen but sophisticated enough for the table. Their clever design makes them easy pouring devices, while the glass is weighted for maximum stability. Each comes with an ergonomically designed glossy black stopper to keep the contents fresh.





SERVICE PLATE
PINK
14058 • 1098760
218 mm / 22 mm
8 1/2" / 3/4"



SERVICE PLATE
BEIGE & PINK
14059 • 1098765
278 mm / 24 mm
11" / 1"



SERVICE PLATE
PINK & GREY
14060 • 1098762
350 mm / 33 mm
13 3/4" / 1 1/4"



CAKE DOME
PINK
91278 • 1098770
300 mm / 130 mm
11 3/4" / 5" m



STORAGE BOX
BEIGE
92716 • 1098809
160 mm / 50 mm
6 1/4" / 2"

P I G M E N T O

PIGMENTO

Studio FormaFantasma emphasizes the manual genius and honor the traces left by the artisan's hand during the crafting of their tableware. Pigmento reinterprets a traditional hand-making technique used to add hue to glass in the process of mouthblowing an object, an intuitive process that generates a different result every time. Through the milky material, amorphous accents of colourful pigments are blown, smoke-like, emphasizing the serendipity and uniqueness of each piece.





BOWL
CLEAR
38222 • 1107321
105 mm / 50 mm
4 1/4" / 2"



BOWL
CARAMEL
38222 • 1107322
105 mm / 50 mm
4 1/4" / 2"



BOWL
CLEAR
38221 • 1107319
159.5 mm / 60 mm
6 1/4" / 2 1/4"



BOWL
CARAMEL
38221 • 1107320
159.5 mm / 60 mm
6 1/4" / 2 1/4"



COMPARTMENT TRAY
CLEAR
24445 • 1107391
78 * 300 mm / 32 mm
3 * 11 3/4" / 1 1/4"



COMPARTMENT TRAY
CLEAR
24446 • 1107390
88 * 308 mm / 44 mm
2 1/2 * 12 1/4" / 1 3/4"



COMPARTMENT TRAY
CLEAR
24447 • 1107389
77 * 296 mm / 34 mm
3 * 11 3/4" / 1 1/4"



COMPARTMENT TRAY
CLEAR
24448 • 1107388
77 * 200 mm / 34 mm
3 * 7 3/4" / 1 1/4"



COMPARTMENT TRAY
CLEAR
24449 • 1107387
88 * 214 mm / 44 mm
2 1/2 * 8 1/2" / 1 3/4"



BOWL
CLEAR
24461 • 1107323
196 mm / 45 mm
7 3/4" / 1 3/4"



BOWL
CLEAR
38223 • 1107324
220 mm / 85 mm
8 3/4" / 3 1/4"



BOWL
CARAMEL
38223 • 1107325
220 mm / 85 mm
8 3/4" / 3 1/4"

SILHOUETTE



SILHOUETTE

Simple, sculptural, ornamental: Space Copenhagen's inspiration for their Silhouette bowls and compartment tray was the fluidity and transparency of the material itself. The table setting is a family of three vessels, each in two sizes and two colors (caramel and clear glass), with compatible bases that can be combined in many ways. This was their first foray into working with glass: "Whether fused, cast or blown, the sheer immediacy of the process, the intensity of coaxing molten glass into these exquisite precise forms is quite unique," says Henriksen. With its tapering edges but solid outlines, Silhouette explores its own contrasts and juxtapositions of solid and void, thick and thin, sharp and soft, along with the variations of color tones, layers and surface treatments.



SILHOUETTE

SILHOUETTE

DESIGNERS

FARAMA



RON ARAD

Architect and industrial designer Ron Arad was born in Israel but moved to London, where his studio is still located, to study at the AA – Architectural Association from 1974 to 1979. The influence of Dadaism on Arad's early work is visible in his Rover chair, which resembles a ready-made art object and was intended as a critique of the art world. After more than 30 years, Arad's work remains diverse, irreverent and sculptural. Exhibited at world-class institutions like the Centre Pompidou in Paris and New York's Museum of Modern Art, his bold pieces always have a powerful clarity of form and reconsider accepted conventions about shape and function, eschewing embellishment or styling.



ALEJANDRO RUIZ

He was born on December 18, 1958, in Bahia Blanca which is a coastal town in Argentina, and graduated from Industrial Design Department in 1984. He has taught lessons in Domus Academy which he had the Master's degree in 1986, and in Architecture Faculty of Milan Technical University. In Studio Ruiz which was founded by himself, he worked with various world famous brands. Ruiz has participated in many design and interior architecture focused events and exhibitions in Italy, France, Finland, Germany, Japan, The Netherlands, England and the USA. He has created the brand called Lessdesign with Anna Lombardi in 1994, with the purpose of developing industrial projects. The designer had been working on packaging, interior design, store design, event and exhibition design in Studio Ruiz. He died at the age of 60 in Milan.



ADRIEN ROVERO

Adrien Rovero's designs often appear to be simple –an endlessly transformable sofa made from elegantly upholstered blocks, for example, or a collection of animal toys made from high quality leather off-cuts– but are inevitably the result of complex considerations. Adrien grew up in the Swiss countryside outside Lausanne, where he started making things from an early age, picking up both man-made and natural objects and turning them into something new. "I've always loved the idea of transformation," he says. In his studio in Renens, he works on furniture, lighting and exhibition designs, and teaches one day a week at the ECAL (École Cantonale d'Art de Lausanne).



ALEV EBÜZZIYA

Alev Ebüzziya is an internationally renowned artist, best known for her unique ceramic bowls which are in 30 museum collections around the world, though she has a real passion for glass and textiles too. "I knew by the time I left school that I wasn't going to be a dentist or a lawyer," she says. "Art is very important to me, but I like to work in the design world too, in larger scale production, so my pieces can reach many more people." In the 1960s, Alev headed to Copenhagen, attracted by the clarity and modernity of the Danish design of that period. Her own work also exudes a simplicity and tranquility that makes her a perfect partner for the FARAMA brand. For the last 32 years, she has lived in Paris, where her 100 m² south-facing loft in the 14th arrondissement also incorporates her studio. From there, she makes regular trips to her native Istanbul, home of FARAMA.



ALİ BAKOVA

Turkish industrial designer Ali Bakova works from a studio in the large industrial zone of Istanbul's business district, Maslak, where creative offices and auto repair shops –designers and industry– live side by side. In 2015, Bakova, who is also one of the city's most respected design educators, co-curated an exhibition entitled Atölye Maslak Maker Culture during which the small-scale production of artistic and artisanal objects was conducted on-site, using 3D printers. Bakova's work can be playful –he may fashion a cat from Iznik tiles or a wooden chair taking its cues from the iconic Galata Bridge– but it also focuses on purity, what is essential and smart functionality.



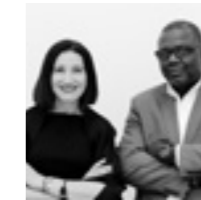
BRAD ASCALON

Third generation designer Brad Ascalon established his eponymous, award-winning New York City studio in 2006 after studying industrial design at Pratt University in Brooklyn. Today, the studio specialises in the design of furniture, as well as lighting, packaging, and other consumer products, following an ethos rooted in straightforward design and a balance of form, function and concept.



DEFNE KOZ

Turkish industrial designer Defne Koz studied at Domus Academy in Milan before joining the studio of Memphis legend Ettore Sottsass. Her work synthesizes her Turkish roots with Italian culture and explores a wide range of product types. It humanizes new technologies, rediscovers artisanry, and highlights material sensuality. With Marco Susani in Chicago, Koz co-founded Koz Susani Design to create hightech devices, high-touch materials and interaction design, luxury crafts, mass-manufactured products and domestic objects. Koz has earned awards from Elle Decor International, Red Dot and the German Design Council while her work has been exhibited around the globe, from Milan's Triennale and MARTa Herford to Galleria Post Design and Ozone Gallery Tokyo.



AYŞE BİRSEL + BIBI SECK

Ayşe Birsal and Bibi Seck co-founded New York design studio Birsal + Seck and have been designing award-winning products for more than 20 years for Fortune 500 companies. A Fulbright Scholar with design degrees from Pratt Institute and the Middle East Technical University in Ankara, Turkey. She introduced her user-centered, humanistic creative process, Deconstruction: Reconstruction™ in a 2015 book, Design the Life You Love (Ten Speed Press), as well as workshops and podcasts. Born in Paris and raised between Paris, London and Dakar, Seck earned a Master's degree in industrial design from ESDI Paris and worked as lead designer at Renault for 12 years, guiding large design teams through complex problems and earning two Car of the Year awards. He founded Dakar Next, a design studio-laboratory in Senegal to bring good design practices to West Africa and showcase their economic value.



ERDEM AKAN

Erdem Akan, born in 1973, has proven to be one of the most energetic proponents of Turkish design. His prolific creations include interiors, products and exhibition designs that offer a synthesis of East and West, traditional and contemporary, reflecting the twin influences of his Istanbul upbringing and a design education in the U.K. Attracted by the purity of Scandinavian design, Akan's imagination also remains at home in Turkey, where "nothing is straight, not even the streets." And so he invokes both in his work. Designing for FARAMA since its inception, he tends to create products as if for himself, while at the same time aligning them with the brand's philosophy of contemporary simplicity. Neither nostalgic nor futuristic, Akan is instead always creating products for "the right now".



INGA SEMPÉ

French designer, born in Paris, Inga Sempé graduated from ENSCI-Les Ateliers (École Nationale Supérieure de Création Industrielle, Paris) in 1993. From 2000 till 2001 she was scholarship holder at the Villa Medici, Academie de France in Rome and opened her own studio the same year. In the beginning, she first collaborated with the Italian companies. Now Sempé works among others with Scandinavian, Italian and French companies. She lives and works in Paris assisted by two other designers.



MARKKU SALO

The work of the Finnish artist and designer Markku Salo ranges from the ridged tumblers he has designed for FARAMA, to largescale site-specific artworks –he recently completed 11 integrated stainless steel sculptures for a new hospital in Tampere– as well as electronics and graphic design. He has lived and worked in the glass village of Nuutajarvi since 1983 – a collection of old worker cottages and factory spaces dating back to 1793. These now accommodate a community of artists and makers including blacksmiths and ceramists and a glass hot shop. Designing, says Markku, is team work. Art is a solitary affair, where only the artist can make the decisions. For him, to do both creates an ideal balance.



MIKKO LAAKKONEN

Mikko studied furniture design at Kymenlaakso University of Applied Sciences, and later received his Masters degree from the University of Art and Design in Helsinki. After working in design and architecture firms for several years, Mikko founded Studio Mikko Laakkonen in 2004. He has been awarded the number of international and national prizes, including: Red Dot Design Award Honorable Mention, (2016), Chicago Athenaeum's Good Design Award (2015 & 2010), Muuz International Awards 2014, Finnish Designer Awards '14: Furniture Designer of the Year, Red Dot: Best of the Best Design Award (2013) Red Dot Design Award (2012), and the Young Designer of the Year prize (2009).



JOE DOUCET

After graduating from the prestigious Art Center College of Design in 1999 with a degree in Communication Design, Doucet quickly began exporting his vision beyond graphic design into product, furniture, environment, packaging, technology and many other problems that clients have thrown at him over the years. His portfolio encompasses a variety of industries and clients. Doucet's work has been exhibited in numerous places internationally, including the London Design Museum and the Biennale International Design in Saint-Étienne, while his awards include a 2016 Cooper-Hewitt National Design Award Nomination in Product Design, a 2010 World Technology Award for Design and Good Design Awards in 2012 and 2008. He currently holds more than 50 patents for his designs and inventions.



NIGEL COATES

Nigel Coates is one of the UK's most creative thinkers, architects and educators. He is the designer of everything from groundbreaking restaurant and retail interiors in countries as diverse as Japan and Turkey, to museum extensions in London, and high-end products for grand European marques, all informed by a sensual and organic quality and a fluidity of line. He has written with unbridled imagination about what cities could be, and fiercely defends the idea that function and aesthetics can happily co-exist. From 1995 to 2011 Nigel Coates also led the Architecture Department at the Royal College of Art in London, and is now establishing a new model for architectural education at the London School of Architecture, based in East London. He divides his time between the UK and Tuscany, where he has restored a 15th century hilltop house in his own unique style. It is this close relationship with Tuscany, and its grand wines, which has directly informed his first collection for FARAMA.



PENTAGON DESIGN

Arni Aromaa and Sauli Suomela established their agency, Pentagon Design, in 1996 – even though they were still studying for their MA in Industrial Design at Helsinki's University of Art and Design at the time. Now they run a studio of 15, including industrial, graphic and interior designers, engineers, and economists. Their projects range from packaging for a Finnish confectionery company to the interior of a new library. Their design education, which followed the Bauhaus ideology, has left them with a preference for restraint and rigour, while coming from Finland means they have always thought of glass as a primary material. "The Finnish glass heritage is so strong," they say. "In the same way that every interior architect has to design at least one chair in their lifetime, every Finnish designer has to work with glass."



SEBASTIAN HERKNER

Born in 1981 in Bad Mergentheim, Germany, Sebastian Herkner earned a degree in product design at the Offenbach University of Art and Design. There, he began to design objects and furniture that synthesize cultures, combine new technologies with traditional craftsmanship, highlight the beauty of his materials and draw renewed attention to the details. Herkner interned at Stella McCartney in London, deepening his knowledge of materials, colors, structures and textures. He opened his award-winning design studio in Offenbach am Main in 2006, and has worked for various brands on interior, exhibition, and museum design projects. Since 2007, Herkner has taught at HfG Offenbach am Main as a visiting lecturer.



REMY SAVAGE

Remy Savage's bartending career started a little over 10 years ago as he worked in pubs in France to finance his Philosophy studies. He there found a passion in spirits and flavours but above all serving people. He settled in Paris for 5 years at the head of Little Red Door where he tried to playfully question the drinking experience, always implementing philosophical notions in his taught process, from the lighting to the menu design every details serves a purpose in Remy's mind. Savage took the "big job" at the Artesian in 2017, worked for 2 years to rebuild the reputation of one of the most notorious bars on the planet using the media of menus to express an individual idea. His creativity and unique way to look at the bar experience got him many accolades, including "World's Most Imaginative Bartender" in 2014 and "Best European Mixologist" at the Berlin Bar Convent in 2018. Recently Remy joined the team at Le Syndicat in order to open a bar tabac inspired venue in Paris while he carries his London plan to associate art and drinks opening "Bar Nouveau", an art nouveau inspired cocktail bar.



SPACE COPENHAGEN

Danish designers Signe Bindslev Henriksen and Peter Bundgaard Rützou launched Space Copenhagen in 2005 to work across disciplines, creating everything from furniture, lighting and refined objects to art installations, art direction and interior design for homes, hotels and restaurants. The practice intuitively folds together functionality and sensuality, the unadorned and the emotional. Henriksen and Rützou often use natural materials, subdued colors, sharp clarity and meticulously worked craft. Theirs is a slow aesthetic that places material at the fore, trusting its innate qualities and longevity. Space Copenhagen clients include leading manufacturers such as GUBI, Stellar Works, Fredericia Furniture, & Tradition and Mater. Their interior design -11 Howard in New York, the original Noma in Copenhagen and destination restaurant, Geranium- has also been recognized internationally.



STUDIO FORMAFANTASMA

Andrea Trimarchi and Simone Farresin are Studio FormaFantasma, an Italian designers duo based in Amsterdam, The Netherlands. Both Andrea Trimarchi and Simone Farresin have become recognized internationally for their provocative experimental materials, investigations and explorations of such issues as the relationship between tradition and local culture, critical approaches to sustainability, the historical, political and social forces that shape human environments and the significance of objects as cultural conduits. Viewing themselves as a bridge between craft and industry, object and user, research and the wider design industry, they have applied rigorous attention to context, process and detail on projects. Works by Studio FormaFantasma have been commissioned by a variety of partners.



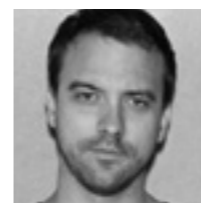
TAMER NAKIŞÇI

Tamer Nakişçi, who currently lives and works between Istanbul and London, describes himself as an interdisciplinary designer, whose ultimate objective is to bring new perspectives to the world of design. His belief is that even a designed object should be open to interpretation, created so each individual user can engage with it in their own way. Tamer studied industrial design at Mimar Sinan University of Fine Arts in Istanbul and was invited during that time to join the prestigious Fiat Advanced Design Concept Lab in Milan. It was there that he learned about the importance of emotion and narrative in design. But it was regular boyhood visits to his father's carpentry workshop that fired his initial enthusiasm for making. He devised a highly successful interactive installation at London's Royal Academy, took part in an exhibition curated by Wallpaper magazine at the Salone del Mobile in Milan, participated in conversations around Istanbul's Design Biennale, featured in Dwell magazine as a rising star.



STUDIO RYGALIK

Studio Rygalik was established in 2006 by Tomek Rygalik. For the first two years it functioned between London and Lodz, Tomek's hometown. Since 2009, the Studio is based in Warsaw. This is when Gosia Rygalik joined the team to become a partner in 2012. Studio Rygalik develops a wide variety of comprehensive projects. The focus is on furniture, products and spaces. The scope is wide - from design, development and implementation of new products to site-specific installations, design & build and production of limited editions, as well as objects, dining experiences and workshops that explore the relations of design, food and eating. The team remains on the fringe of distinctly commercial activities, while engaging in cultural practices and building its experimental identity.



TOMAS KRAL

Switzerland-born Tomas Kral established his product design studio in Lausanne in 2008 while still earning the third of his degrees in industrial, product and luxury design at the École Cantonale d'art de Lausanne (ECAL). Kral is preoccupied with materials and processes, industrial production and research, so that, out of complex investigations, he produces exquisitely simple pieces, ranging from tabletop objects to lighting, furniture and accessories in glass, cork and ceramic. He has also been a recipient of the Swiss Federal Design Award.



INGRID BERGÉR

For more than 40 years, Ingrid Bergér (designer) has been engaged in design and product development with a focus on glass and porcelain. Having grown up in a glassmaking family from the Bavarian Forest she graduated from the masterclass at the glass college in Zwiesel before starting to materialise her designs for various internationally renown glass and porcelain factories. Ingrid Bergér stands for clear design in the Bauhaus style. Her emphasis lies on highlighting the characteristics and strengths of materials. Due to the clear lines of her design, Ingrid Bergér has received a wide variety of awards. Award with the Red Dot, Award with the Ranking Prize, Design Innovation Award for High Design Quality of the Design Zentrale Nordrhein-Westfalen Frankfurt Trade Fair (Tendence) - selected for Special Show: Design Products by Ingrid Bergér were and are on display in renowned museums and exhibitions worldwide e.g. the Victoria & Albert Museum, London or the MoMA, New York.



YOUMEUS DESIGN

London-based Youmeus seeks out ambitious clients and, through design, makes them relevant. The office's work -the creation of design products and consumer experiences- begins with a fascination for the various ways that people live and the myriad different ways in which humans experience daily life. Through their philosophy and creativity, Youmeus unlock radical and imaginative ideas, glamorous, playful and savy visuals, and generate new opportunities for brands on the vanguard of their industries.

ROCK & POP ARTISTS



ERENSU
EKMEKÇİLER

In 1992, Istanbul-based tattoo artist Ekmeççiler was born into a family of artists. Painting, sculpture, music, even musical instrument making, are a normal part of daily life. While studying glass design at Mimar Sinan University, he worked with artists like Tim Shaw and Wilhelm Wernim. Today, however, he makes his living by inking tattoos. "All branches of art are connected, so I cannot choose just one," he says. "The attractive thing about glass is that it can be broken and does not accept errors - much like skin."



KIEN

Born in Istanbul in 1986, Kien began writing graffiti and making street art in high school. "When I was introduced to graffiti, there were few people interested in it," he recalls. "That's why the whole city belonged to us." Experience on the streets led him to study Graphic Design at Marmara University and to become an art director in the ad industry. In 2018, Kien launched his own studio, combining street art, design, and advertising.



UMUT
KARAMAN

After graduating in Graphic Design from Hacettepe University's Fine Arts Department in 1999, Ankara-based illustrator Umut Karaman created visuals for the software industry. Soon, however, under the name Yumidoko, her client list would include fashion industry icons like Vogue, Mavi Jeans, Les Benjamins and Ayşe Kulin. Karaman's work blends classic and pop, sophisticated and simple, calm and joyful in diverse media: children's book illustration, interior decoration and home textile design. She even turns her illustrations into clay sculpture.



CINS 3000

Cins was born in Ankara, Turkey's capital city, in 1984. He earned his undergraduate degree in Graphic Design from Yeditepe University and his Master's in Visual Communications at Sabancı University in Istanbul. Writing the name Cins, which means 'breed' in Turkish, his diverse, organic-looking artwork has found inspiration in cartoons, surrealism and abstract storylines that evoke emotion, not sentiment. Living and working in Istanbul today, he is influenced by his time on the streets, as well as by the forms and techniques of graphic design.



LUCA
FONT

Born in Bergamo, in Northern Italy, in 1977, Luca Altini earned a degree in Political Science at the University of Milan and a Master's in Communications at the Catholic University of Milan. He started his professional life in the advertising industry but, during his mid-20s, began to explore the 'underworld aesthetic' of tattoo art. Soon, he moved into inking full time -in a Milan studio and tattoo parlors around the globe- under the name Luca Font.



FARAMA
Design Team

FARAMA Design Team fearlessly investigates innovative ideas. We are constantly inquisitive and work hard to develop dynamic collaborations with artists and designers. FARAMA contemporary collections are designed to fit seamlessly with modern life, perfect for special occasions and everyday use and always enchant the eye.

INDEX (by SERIES NAME)

SERIES NAME	PAGE NUMBER
Beret	35
Bubble	39
Concentrics	41
Dame Jeanne	43
Ecrin	47
Kurage	49
Inca	51
Magnolia	58-59
Midnight	61
Mini Lily	61
Mist Lights	67
Mono Box	68
Nest	69
Opti	71
Sweets	73
Eden	76
Blossom	77
Moon	77
Altruist	78
Egoist	79
Fumo	81
Ilo	82
Joy	83-84
Look Down	85
Paroles Paroles	89
Pebbles	90
Roots	91
Blow	95
Mira	95
Mono	97
Orion	100
Tree	100
Smooth	101
Balance	116
Cantina	117
Climats	118
Decanting	121
Fantasy	122
Jazz	125
Jour	127
Neo	130
O ₂	131
Oxygen	131
Pure	133
Red or White	134
Refine	135
Round Up	136
Terroir	137
Vini	138
Vinifera	139
Wine Party	143
Alba	148
Arch	149
Big Top	152
Caldera	153

INDEX (by SERIES NAME)

SERIES NAME	PAGE NUMBER
Camp	155
Chill	157
Club	159
Club Ice	159
Finesse Grid	160
Glazz	161
Hepburn	167
Highlands	169
Islands	169
Malt	173
No. 9	175
Paris	177
Savage	179
Shade	180
Wayne	183
Addict	186
Barduck	186
Ahoy	187
Colored O	191
Colored U	191
Delizia	192
Dual	192
Lady	195
Mr. & Mrs.	199
Parrot	201
Poem	206
Rhythm	206
Stamp	207
Amour	210
Cruet	210
Bloom	211
Cupola	213
Fromage	214
Glacier	215
Ice Cube	216
Olea	217
Tilt	217
Ghost Zero	104-105
Stem Zero	108-112
Heads Up	123 / 162
Memento Mori	13-15 / 24-29 / 174
Vintage	140-141 / 181
Hemingway	162 / 194 / 215
Mini Magnolia	17 / 60
Beak	188-189
Mirage	19 / 129
Finesse	17-19 / 160 / 193
Pigmento	205 / 219
Silhouette	220-221
Blade	37-38
Contour	42 / 119
Layers	54-56
Mist	64-65
Ace	78 / 149

INDEX

Mould No	SKU	V (cc)	V (UKoz)	V (USoz)	d (mm)	h (mm)	d (inch)	h (inch)	Page No
20791	1116377				240	200	9 1/2	7 3/4	58
20787	1116375				180	320	7	12 2/4	59
20787	1116378				180	320	7	12 2/4	59
20787	1116374				180	320	7	12 2/4	59
28551	1076791				112,5	200	4 1/2	7 3/4	60
28551	1076795				112,5	200	4 1/2	7 3/4	60
28552	1076803				80	150	3 1/4	6	60
28552	1076807				80	150	3 1/4	6	60
28553	1076812				114	95	4 1/2	3 3/4	60
28553	1076814				114	95	4 1/2	3 3/4	60
28554	1076830				56	103	2 1/4	4	60
28554	1076832				56	103	2 1/4	4	60
28394	1055534	4300	151 1/4	145 2/4	310	74	12 1/4	3	61
28432	1075288	1000	35 1/4	33 3/4	250	80	9 3/4	3 1/4	61
28433	1075289	900	31 3/4	30 2/4	143	100	5 3/4	4	61
15556	1075319				205*110	290	8*4 1/4	11 2/4	64
15556	1116250				205*110	290	8*4 1/4	11 2/4	64
15557	1075320				280*140	380	11*5 2/4	15	64
15557	1116252				280*140	380	11*5 2/4	15	64
15558	1075321				270*100	210	10 3/4*4	8 1/4	64
15558	1116254				270*100	210	10 3/4*4	8 1/4	64
15556	1101315				205*110	290	8*4 1/4	11 2/4	65
15556	1101313				205*110	290	8*4 1/4	11 2/4	65
15557	1101322				280*140	380	11*5 2/4	15	65
15557	1101317				280*140	380	11*5 2/4	15	65
15558	1101326				270*100	210	10 3/4*4	8 1/4	65
15558	1101324				270*100	210	10 3/4*4	8 1/4	65
38441	1116577				93*100	141	3 3/4*4	5 1/2	67
38441	1107884				93*100	141	3 3/4*4	5 1/2	67
38591	1116576				75*70	107	2 3/4*3	4 1/4	67
38591	1116575				75*70	107	2 3/4*3	4 1/4	67
28350	1055588				250	228	9 3/4	9	68
28350	1055595				250	228	9 3/4	9	68
28351	1055590				215	197	8 1/2	7 3/4	68
28351	1055598				215	197	8 1/2	7 3/4	68
28352	1055591				185	163	7 1/4	6 2/4	68
28353	1055593				155	133	6	5 1/4	68
28353	1055594				155	133	6	5 1/4	68
28353	1055604				155	133	6	5 1/4	68
92356	1027133	600	21	20 1/4	150	150	6	6	69
92356	1050703	600	21	20 1/4	150	150	6	6	69
92356	1101347	600	21	20 1/4	150	150	6	6	69
92426	1050695	200	7	6 3/4	90	90	3 1/2	3 2/4	69
92426	1050696	200	7	6 3/4	90	90	3 1/2	3 2/4	69
92426	1101353	200	7	6 3/4	90	90	3 1/2	3 2/4	69
38230	1107351				197*182	138	7 3/4*7 1/4	5 2/4	71
38230	1107352				197*182	138	7 3/4*7 1/4	5 2/4	71
38231	1107353				200*178	242,5	7 3/4*7	9 2/4	71
38231	1107354				200*178	242,5	7 3/4*7	9 2/4	71
38232	1107355				305	98	12	3 3/4	71
38232	1107356				305	98	12	3 3/4	71
28366	1075385	1500	52 3/4	50 3/4	258,5	57	10 1/4	2 1/4	72

INDEX

Mould No	SKU	V (cc)	V (UKoz)	V (USoz)	d (mm)	h (mm)	d (inch)	h (inch)	Page No
28367	1076992				125	200	5	7 3/4	73
28368	1076988				120	240	4 3/4	9 2/4	73
28369	1076989				320*170	270	12 2/4*6 3/4	10 3/4	73
15479	1050536				226	340	9	13 2/4	76
15531	1055234				128,5	200	5	7 3/4	76
92606	1075367				93	135	3 3/4	5 1/4	76
92606	1075368				93	135	3 3/4	5 1/4	76
92606	1075369				93	135	3 3/4	5 1/4	76
28223	1050426				130	210	5	8 1/4	77
28223	1050507				130	210	5	8 1/4	77
28225	1050509				200	295,5	7 3/4	11 3/4	77
24356	1049318				150	35	6	1 2/4	78
24356	1050746				150	35	6	1 2/4	78
25651	1107918				161	42	6 1/4	1 3/4	78
25652	1107920				120*200	42	4 3/4*7 3/4	1 3/4	78
24357	1049316				130*180	40	5 *7	1 2/4	79
24357	1050742				130*180	40	5 *7	1 2/4	79
24421	1091092				160	65	6 1/4	2 2/4	79
13505	1116044				100	55	4	2 1/4	81
24278	1086216				117*164	25	4 2/4*6 2/4	1	81
24997	1116617				160	43	6 1/4	1 3/4	81
25401	1076954				147*101	55	5 3/4*4	2 1/4	81
38601	1199469				180	282	7	11	82
38602	1199452				140	212	11 3/4	8 1/4	82
38603	1199453				100	63,5	4	2 2/4	82
28414	1055897				81	64	3 1/4	2 2/4	83
28414	1055900				81	64	3 1/4	2 2/4	83
28414	1075481				81	64	3 1/4	2 2/4	83
28415	1055904				100	80	4	3 1/4	83
28415	1055907				100	80	4	3 1/4	83
28415	1075483				100	80	4	3 1/4	83
28414	1055899				81	64	3 1/4	2 2/4	84
28414	1055898				81	64	3 1/4	2 2/4	84
28415	1055906				100	80	4	3 1/4	84
28415	1055909				100	80	4	3 1/4	84
28415	1055905				100	80	4	3 1/4	84
25510	1108206				164*64	40	6 2/4*2 2/4	1 2/4	89
25512	1108208				164*64	40	6 2/4*2 2/4	1 2/4	89
25514	1108210				164*64	40	6 2/4*2 2/4	1 2/4	89
25516	1108212				164*64	40	6 2/4*2 2/4	1 2/4	89
25518	1108214				164*64	40	6 2/4*2 2/4	1 2/4	89
25532	1116620				164*64	40	6 2/4*2 2/4	1 2/4	89
25533	1116621				164*64	40	6 2/4*2 2/4	1 2/4	89
28408	1075193				97*116	45	3 3/4*4 2/4	1 3/4	90
28408	1075196				97*116	45	3 3/4*4 2/4	1 3/4	90
28408	1075202				97*116	45	3 3/4*4 2/4	1 3/4	90
28408	1075206				97*116	45	3 3/4*4 2/4	1 3/4	90
28409	1075211				84,5*84	45	3 1/4*3 1/4	1 3/4	90
28409	1075215				84,5*84	45	3 1/4*3 1/4	1 3/4	90
28409	1075219				84,5*84	45	3 1/4*3 1/4	1 3/4	90
28409	1075241				84,5*84	45	3 1/4*3 1/4	1 3/4	90
28410	1075246				71,5*77,5	45	2 3/4*3	1 3/4	90

INDEX

Mould No	SKU	V (cc)	V (UKoz)	V (USoz)	d (mm)	h (mm)	d (inch)	h (inch)	Page No
28232	1050325	1100	38 3/4	37 1/4	133,5	140	5 1/4	5 2/4	215
28233	1050341	9650	339 3/4	326 1/4	286	300	11 1/4	11 3/4	215
68308	1052160	1650	58	55 3/4	183*143	154	7 1/4*5 3/4	6	215
24323	1116675				90	60	3 1/2	2 1/4	216
25368	1116673				181*77	41	7 1/4*3	1 2/4	216
28226	1050303	225	8	7 2/4	100	115	4	4 2/4	217
28227	1050309	225	8	7 2/4	100	115	4	4 2/4	217
92548	1050308	225	8	7 2/4	100	115	4	4 2/4	217
92564	1049748	1200	42 1/4	40 2/4	175	273	7	10 3/4	217
92565	1049749	1000	35 1/4	33 3/4	127	290	5	11 2/4	217
92566	1049750	300	10 2/4	10 1/4	102	184	4	7 1/4	217
14058	1098760				218	22	8 1/2	3/4	219
14059	1098765				278	24	11	1	219
14060	1098762				350	33	13 3/4	1 1/4	219
91278	1098770				300	130	11 3/4	5	219
92716	1098809	660	23 1/4	22 1/4	160	50	6 1/4	2	219
24445	1107391				300*78	32	11 3/4*3	1 1/4	220
24446	1107390				308*88	44	12 1/4*3 2/4	1 3/4	220
24447	1107389				296*77	34	11 3/4*3	1 1/4	220
24448	1107388				200*77	34	7 3/4*3	1 1/4	220
24449	1107387				214*88	44	8 2/4*3 2/4	1 3/4	220
24461	1107323				196	45	7 3/4	1 3/4	220
38221	1107319				159,5	60	6 1/4	2 1/4	221
38221	1107320				159,5	60	6 1/4	2 1/4	221
38222	1107321				105	50	4 1/4	2	221
38222	1107322				105	50	4 1/4	2	221
38223	1107324				220	85	8 3/4	3 1/4	221
38223	1107325				220	85	8 3/4	3 1/4	221



January 2023

