

# FARAMA

**Magnify Your  
Possibilities.**



NEVER STOP SEEING THE UNSEEN.

ADDING A NEW DIMENSION TO MRI

This  
is



# The next generation Open MRI from Esaote

The technological evolution in MRI of the last years has seen important developments particularly in data acquisition and elaboration resulting in a substantial improvement in image quality and reduction of scan-times.

**Today, the majority of MRI installations are about outcome-based services that not only address specific clinical needs, but also operational and financial demands.**

This is the strength of Esaote's *farama*, which incorporates latest MRI technology for uncompromised diagnostic quality, combined with a permanent magnet that guarantees low operating costs.

## **farama, born from 30 years of experience in MRI**

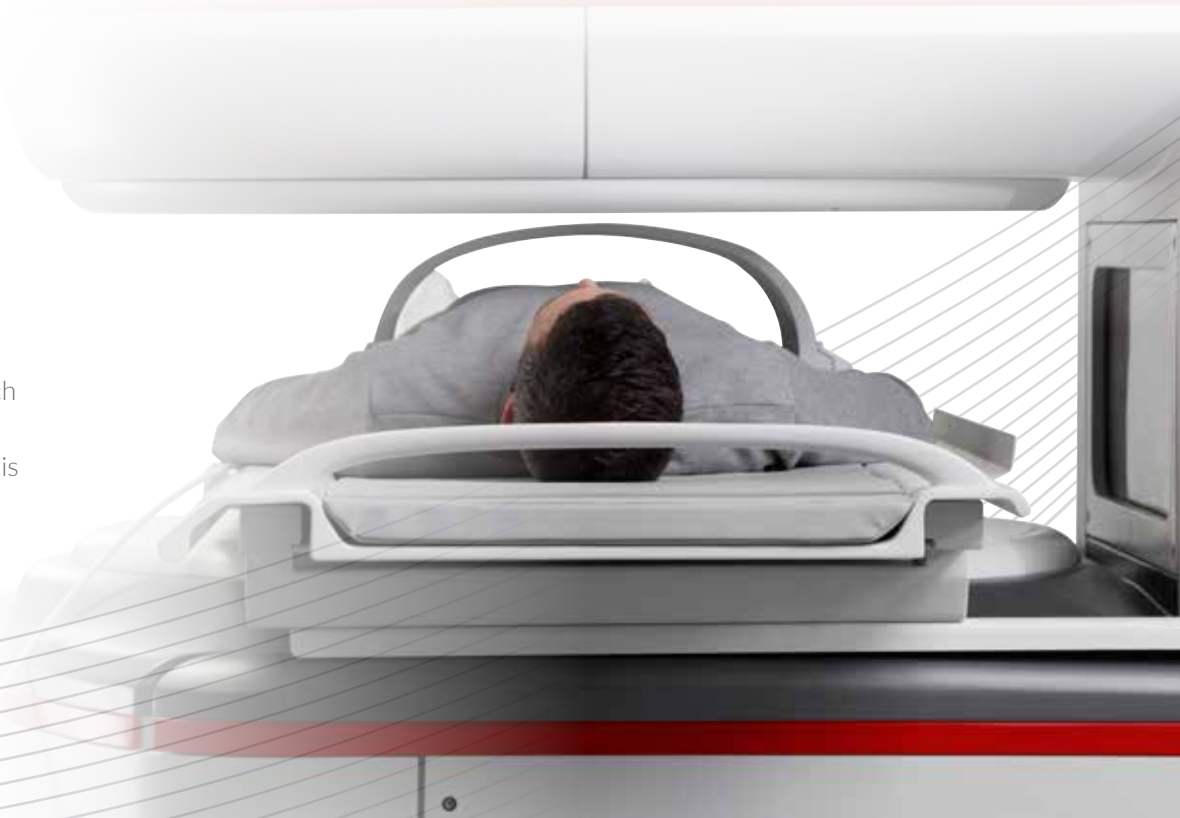
*farama* is based on Esaote's long-term experience and success in MRI, which is predominantly due to a strong focus on customer needs.

With *farama*, Esaote has created a customer driven MRI where technology is applied to serve user needs in terms of diagnostic efficacy and cost per exam.

## **Broaden your perspective**

Thanks to the Esaote MRI technology, clinicians can broaden their perspective without compromising on workflow, image quality, ease-of-use or patient comfort.

Our open whole-body system is the right choice for those who want to go the extra mile without losing momentum.



# Dedicated applications

## True-Motion

Several pathologies are affected by the motion of a joint like e.g. impingement: in these cases, Esaote's True-Motion MRI offers a complementary approach to standard static MRI with dynamic real-time acquisition of the joint in motion. An additional tool to improve patient care in particular in high-level sports medicine.



## Post-surgical imaging

Patients with metal implants are an ever-increasing part of the MRI population. **farama** MRI is an optimal solution as the system has an intrinsic low level of susceptibility for metal with respect to traditional MRI. Together with the dedicated MAR sequences, **farama** offers high quality diagnostics also in the presence of the majority of implants



# Patient positioning and comfort

Open system, free coil positioning, laser alignment, split coil design, transparent headcoil, easy-access patient bed. It all adds up to making patient positioning easy, fast and comfortable.

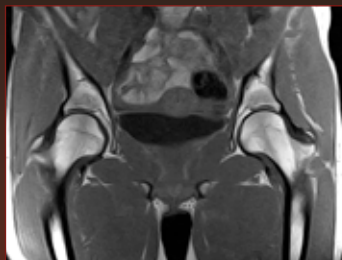
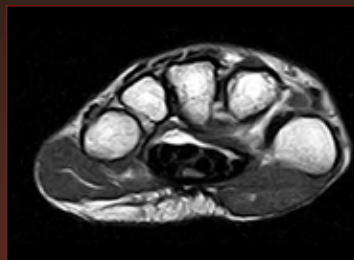
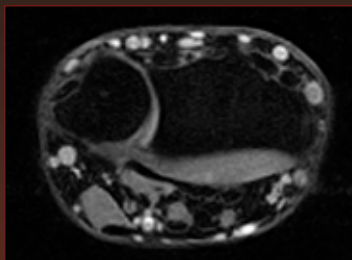
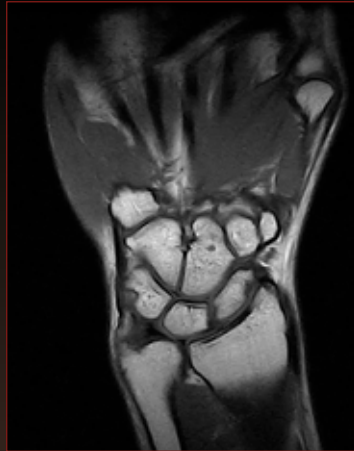
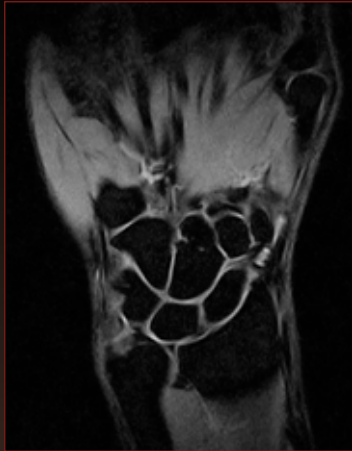
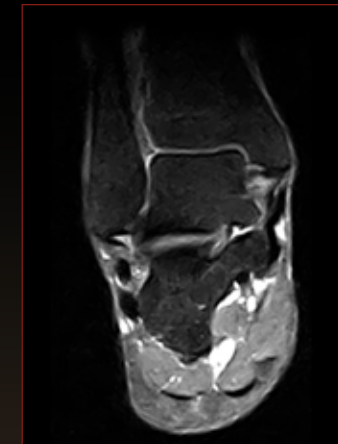
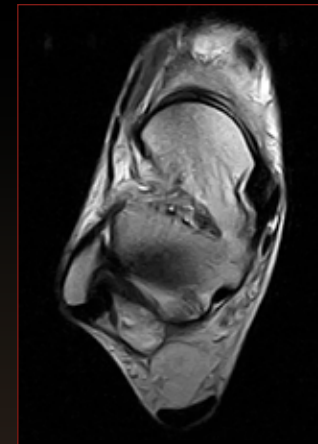
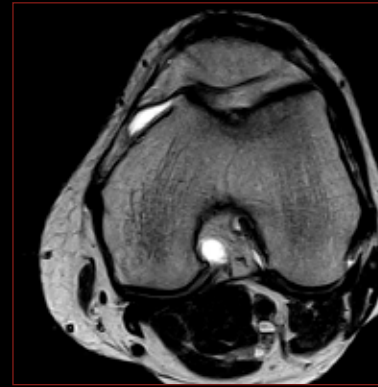
## Claustrophobic patients

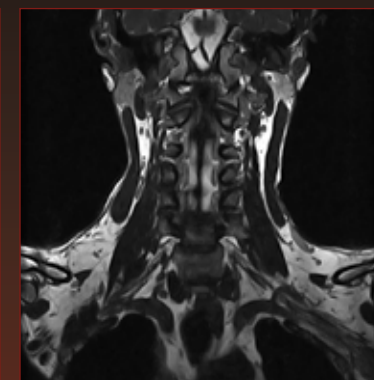
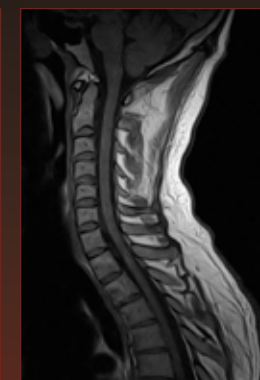
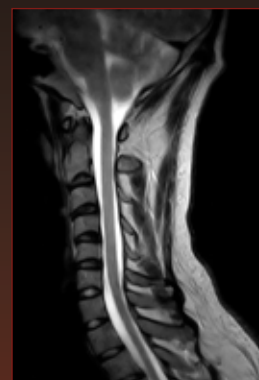
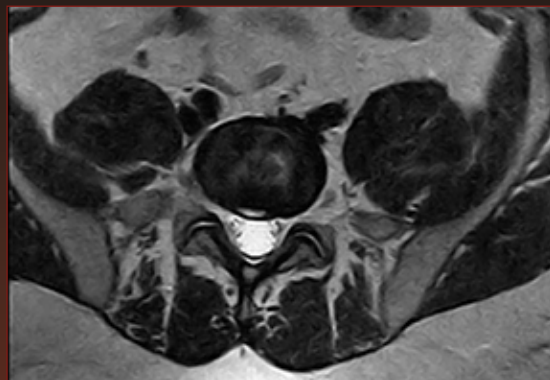
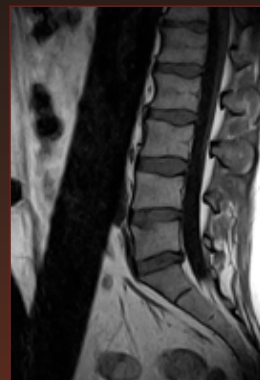
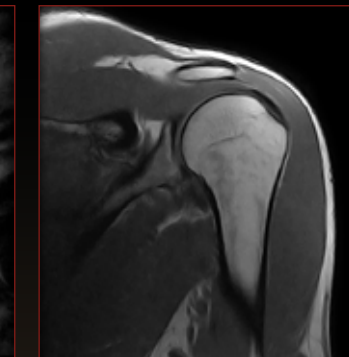
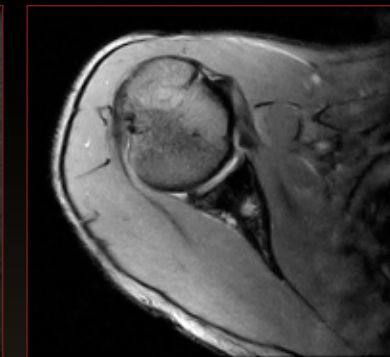
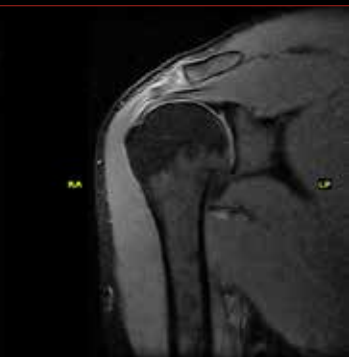
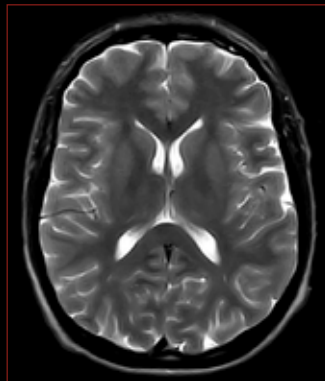
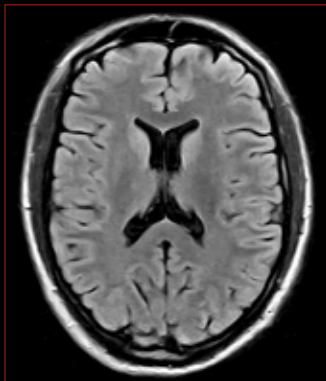
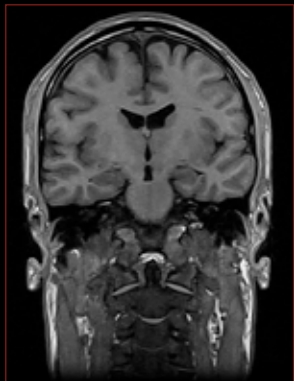
farama is the right system for claustrophobic patients. The open magnet simply makes it a comfortable MRI experience for all patients, in particular children.



# Consistent Image Quality

Optimized subsystems components and fast computing in combination with advanced software algorithms for data acquisition and elaboration like Speed Up technology and TR Reduction, assure excellent and consistent image quality in short scan-times.





# Your ideas into practice

## Productivity without compromises

Productivity is about ease of use, optimized scan times and patient care and farama covers all these aspects.



### Ease of use

Esaote systems have the reputation of being very easy to use and farama is in line with this standard offering a user interface focused on getting the work done without losing the flexibility to customize scans whenever needed.



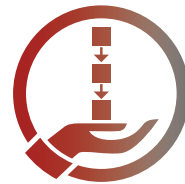
### Patient positioning

Open system, free coil positioning, laser alignment, split coil design, transparent headcoil, easy-access patient bed. It all adds up to make patient positioning easy, fast and comfortable.



### Patient care

The open structure and comfortable patient table guarantee an easy and non-claustrophobic patient experience meaning less anxiety and therefore better and faster exams.



### Examination workflow

Simplified workflow and Protocol driven scanning for fast exams and high throughput without compromising diagnostic quality.





# Dedicated Coils



SPINE/HIP



KNEE



HAND/WRIST



CERVICAL



SHOULDER



HEAD



ANKLE/FOOT

## When results count

The outcome is what's important: diagnostic quality.

## Multi Channel Coils

Ample selection of dedicated for an optimal result and excellent patient experience. The multichannel design allows for a high SNR, high signal homogeneity and therefore high spatial resolution.



# Compelling economics

farama has been developed in line with the Esaote MRI philosophy which means quality MRI at reduced costs:

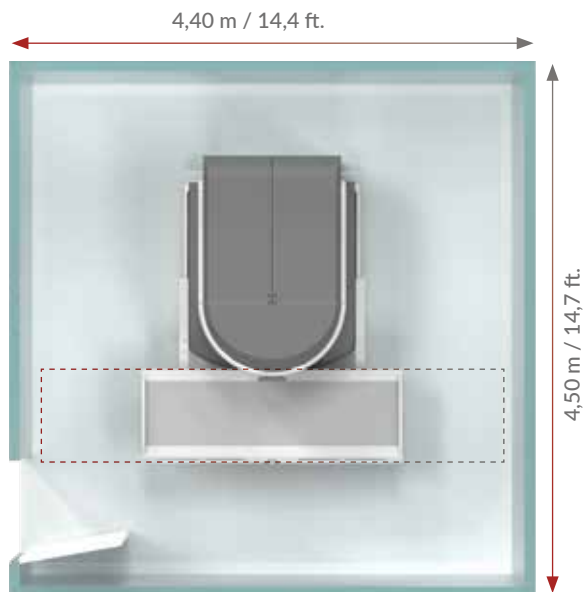
- Compact installation
- Easy operation
- Low running costs

## Easy installation

Thanks to its smart design the magnet unit and RF shielding will fit in a space of 20 m<sup>2</sup> (212 sq.ft.).

## Low running costs

- Low power consumption (maximum 3 Kw)
- No cryogenes, no water cooling
- Dedicated service contracts



Example of a typical installation.  
Please contact your local representative for a personalized design for your site.



# Connectivity and Integration

farama includes complete networking and storage features to work either stand alone or as part of an integrated environment.

## Data security

farama is in line with today's requirements for data security with automatic antivirus security updates.

## Standalone operation

As a stand-alone scanner, farama comprises an integrated DVD storage and retrieve software package, printer output facility and a patient-CD package.

## Network operation

farama is DICOM and IHE compliant and offers smart solutions for connectivity to your PACS and teleradiology.

# System Life Cycle Protection

## Remote service and customer care

All Esaote systems come with remote service capability. Many system parameters and system components can be checked via the remote service program specially developed for Esaote MRI systems. The remote service capability allows Esaote to react to any potential issue and to get you up and running faster!

## Upgrades

Esaote MRI systems are built for the future. With an average life cycle for an MRI system of about 11 years, being able to keep up with technology advances is important to satisfy market needs.



## Esaote MRI

One of the top 10 diagnostic imaging providers, respecting the highest quality standards in production and customer service processes.



# FARAMA



0123