

# PRODUCT CATALOGUE



 **farama** 

## Contents

Founded in 1995, has continually strived to supply remarkable medical devices and solutions for our customers. The faith of “bringing innovation and value together to improve human condition” permeates every corner of corporate culture. With the commitment to becoming the pillar of the world healthcare industry and providing optimal services for our customers, we have created a great momentum to become more internationalized and offer an innovation-oriented future.

With more than 100 types of products ranging from Obstetrics & Gynecology Products, Patient Monitoring Products and Diagnostic Cardiology Based Products, to Ultrasonic Imaging Systems and In-vitro Diagnostic Products, EDAN has built solid foundations for future product exploration. provides innovative products and excellent services to customers in over 160 countries and regions across the world.

We have established our Headquarters in Shenzhen, China and possesses 18 subsidiaries, as well as 4 R&D centers around the world. Domestically, has reached 40,000 medical facilities with Industry Leading Healthcare solutions. Catering to the needs of Healthcare professionals and their patients, EDAN is and will always be dedicated in innovation and service.

Obstetrics & Gynecology	4
Ultrasound Imaging	20
Patient Monitoring & Life Support	32
Diagnostic ECG	44
Point-of-Care Testing	58
<i>In-Vitro</i> Diagnostics	64
Veterinary	70

**NEW**

# Superior Technology Phenomenal Solutions

## F15 Series

Fetal & Maternal Monitor



As the the ultimate CTG machine, F15 series fetal monitor is the perfect combination of advanced technology and gold standard algorithm in the new era. With a state-of-the-art design, delicate appearance and strong strength are the biggest sincerity of medical equipment manufacturers, each probe seems to be like a work of art. Meanwhile, smarter workflows require more powerful technologies, such as automatic probe activation and wireless charging, to keep the monitoring process in hand. Consider F15 not only for today's monitoring needs but also as an enduring platform for the future.



- 12-crystal broad beam waterproof FHR transducer
- Flat surface design and waterproof TOCO transducer
- 15.6" high resolution, color TFT-LCD screen
- Allow monitoring for twins and triplet
- Touch screen provides great ease of use
- Fetal and maternal monitoring parameters both available
- Three monitoring interfaces (Fetal/Fetal & Maternal/Maternal)
- Signals Overlap Verification to separate twins/triplets FHR from MHR
- Professional CTG analysis system
- Built-in long life thermal printer
- Compatible with 150/152 mm universal recording paper
- Compatible with American/International standard recording paper
- 5000 hours waveform storage and playback
- Fast printing of stored traces
- Wireless charging
- Wired & wireless central monitoring solution

F15 will configure the wireless parameter module and new TOCO-P solution which is able to monitor the Maternal Pulse without the SpO<sub>2</sub> or MECCG

### Standard Configuration:

- Twins FHR, TOCO, MFM, AFM, CTG analysis, Touch Screen, Li-ion Battery

### Optional Configuration:

- Triplets FHR, MECCG, HR/PR, NIBP, SpO<sub>2</sub>, TEMP, DECG & IUP, Fetal Stimulator

# Transform the Way You Work

## FTS-6

Central Monitoring System



With central monitoring system and wireless transducers, FTS-6 is a centralized workstation aiming to improve the monitoring experience for both nurse and mom. As a revolutionary product of Edan, it changes the way of fetal monitoring examination from bedside to centralization, bringing a streamlined workflow into clinical daily routine. Mom-to-be could also benefit from free of movement when monitoring by wireless transducers.

- 21.5 inches all-in-one PC with optional touch screen
- Centralized monitoring for up to six patients with single fetus and one patient with twins
- Allow monitoring for twins and triplet
- 12-crystal wireless ultrasound transducer
- Monitoring with Wi-Fi transducers for patient's maximum flexibility
- US & TOCO transducers arbitrary pairing
- Transducer auto pairing with monitoring window when took out from the workstation
- Transducer tracking ability
- Powerful data management software for data recording, analyzing, saving and printing
- Built-in professional CTG & NICHD analysis
- Comprehensive alarming system for prompt action taking
- Optional external printer for paper saving
- Support connection of all Edan fetal monitors
- Up to 15 monitoring windows displaying simultaneously
- Support HL7 connection to HIS

# Monitoring for Both Mother and Baby

## F9 + FTS-3 Fetal & Maternal Monitor



## Full Solution with FTS-3



- Unique twins FHR monitoring
- Highly sensitive 12-crystal FHR probe
- Dual Color OLED display
- Automatically probe identification
- Great freedom of movement for the patient
- Cordless and waterproof probe for water delivery
- Long lasting rechargeable battery for the probe and base station
- Base station with built-in antenna
- Compatible with F6/F9/F9 Express

### Standard Configuration:

- FHR, TOCO, AFM, Li-ion Battery

### Optional Configuration:

- Twins FHR, MECCG/DECCG

## F9 Series

### Fetal & Maternal Monitor

- 12-crystal broad beam waterproof FHR transducer
- 12.1" high resolution, color TFT-LCD touch screen
- Fetal and maternal monitoring parameters both available
- Signals Overlap Verification to separate twins FHR from MHR
- Professional CTG analysis system
- Compatible with 150/152 mm universal recording paper
- Compatible with American/International standard recording paper
- 60 hours waveform storage and playback
- Fast printing of stored traces
- Telemetry Transducer System compatibility

### Standard Configuration:

- Twins FHR, TOCO, MFM, AFM, CTG analysis, Li-ion Battery

### Optional Configuration:

- MECCG, HR/PR, NIBP, SpO<sub>2</sub>, TEMP, DECCG & IUP, Fetal Stimulator, Touch Screen, Telemetry Transducer System

## F6 Fetal & Maternal Monitor

- Highly sensitive 1MHz waterproof FHR transducer
  - 10.1" foldable, color TFT-LCD screen
  - Display waveforms and digitals simultaneously
  - Signals Overlap Verification to separate twins FHR
  - Professional CTG analysis system
  - Built-in long life thermal printer
  - Compatible with 150/152 mm universal recording paper
  - Compatible with American/International standard recording paper
  - 60 hours waveform storage and playback
  - Fast printing of stored traces
  - Wired & wireless central monitoring solution
  - Telemetry Transducer System compatibility
- **Standard Configuration:** FHR, TOCO, MFM, AFM, CTG analysis, Li-ion Battery
  - **Optional Configuration:** Twins FHR, DECG & IUP, Fetal Stimulator, Telemetry Transducer System



## F2/F3 Fetal Monitor

F2 & F3 Fetal Monitor, with its brand new design, foldable screen and enhanced functionality, addresses the needs of obstetrical departments in offices, clinics and hospitals. F2 & F3 offers an extensive set of external fetal care monitoring parameters such as FHR, TOCO as well as fetal movement. Efficiently designed, it is compact and easy to use, also with enhanced user functionality.

- 5.6" foldable screen
  - Large numeric and graphic display for ease of readability
  - Signals Overlap Verification to separate twins FHR
  - Convenient probe rack and compact design
  - 60 hours backup memory for seamless monitoring
  - USB port enables memory expansion
  - Built-in long life thermal printer
  - Compatible with 150/152 mm thermal recording paper
  - Fast printing of stored traces
  - Long life Li-ion battery guarantees the mobility
  - Wired & wireless central monitoring solution
- **Standard Configuration:** FHR, TOCO, MFM, AFM, Li-ion Battery
  - **Optional Configuration:** Twins FHR, DECG & IUP, CTG analysis, Fetal Stimulator



5.6" black&white LCD screen



5.6" color LCD screen



## MFM-CNS Lite Central Monitoring System

MFM-CNS Lite is a central monitoring system, which tailed for the use of clinics and small hospitals. It not only meets the requirement of single monitor connection from the clinics, but also extendable connection of up to six monitors for small hospitals' use.

- Real-time and offline data transmission to PC enables you to transmit the data anytime
- Upgradable connection of up to 6 beds to meet clinics' demands
- Connection via RS232 or LAN
- Store up to 24 hours monitoring waveforms for each examination
- Optional antepartum CTG & NICHD analysis function
- Annotations & Comments
- Export report in PDF & JPG format
- Windows 10 Compatibility



PDF&JPG report format



Windows compatibility



Real time & Offline transmission



Annotations & Comments

## MFM-CNS Central Monitoring System

- Connection of up to 128 bedside fetal/maternal monitors
- Bi-directional communication of patient ID and alarming setup
- Time synchronization
- Built-in antepartum CTG & NICHD analysis function
- Large capacity of storage up to 100,000 records
- Up to 200 groups of NIBP data for each record
- Review of events, CTG waveforms, trends and NIBP data
- Remote monitoring from different locations via CNS Client
- Supports for 32 people login at the same time
- User authority allocation to protect patient information
- Annotations & Comments
- Built-in partogram for labor stage management
- Export PDF & JPG format report
- JPG format signatures on the report
- User-defined hospital information on the report
- American/International printing format on A4 paper by external printer
- Wired & wireless central monitoring system solution
- HL7 Support
- Windows 10 Compatibility



## FTS-6 Mobile Remote Fetal Monitor

FTS-6 Mobile is not only a landmark product of fetal monitor entering the era of miniaturization, but also a symbol of fetal monitor entering the era of Cloud Data Management. Meanwhile, we provide remote fetal monitor connection solutions including cloud server setup and CNS server setup.



2.4G



Built-in Battery

IP28

Waterproof



Extremely Portable  
Fetal Monitor Kit

## SD1 Ultrasonic Pocket Doppler

Our newly innovation, the all-in-one compact handheld Doppler, SD1, is a remarkable member of Edan's ultrasound Doppler series.

- ALL-IN-ONE design
- Built in speaker
- Digital display of FHR
- Touch panel for easy control
- Android or iOS APP access for tracking baby's development
- 3MHz probe detects fetal heart beat
- Normal AA batteries for easy replacement
- Automatic power-off for battery power saving
- Volume adjustable
- Pulse wave technology

Model: SD1 with APP / SD1 without APP



GERMAN  
DESIGN  
AWARD  
SPECIAL  
2019



### SD3 Series Ultrasonic Pocket Doppler

With excellent sensitivity, complete interchangeability and high durability, SD3 series Ultrasonic Pocket Doppler are ideal for routine fetal heart rate detection by the clinicians.

- 2 MHz probe with deep penetration for later pregnancy and larger patients
- 3 MHz probe detects fetal heart beat as early as 9 weeks
- 4/5/8 MHz probe for blood flow detection
- Compact design with easy one-hand operation
- Plug-and-play
- Bright OLED screen with real-time FHR display
- Real-time monitoring for daily use
- Record & play with audio playback and numeric display
- Automatic power-off while putting the probe back to the rack (SD3 PLUS & SD3 PRO)
- Normal AA batteries for easy replacements
- Built-in Li-ion rechargeable battery ensures long working time
- Unique charger stand design

SD3



### SonoTrax Series Ultrasonic Pocket Doppler

SonoTrax Series Ultrasonic Pocket Doppler provides care givers with the most cost-effective solution to meet the routine obstetric and vascular requirements.

- Compact design
- Ease of use
- Large backlight LCD display
- Interchangeable waterproof probe
- Support 2MHz, 3MHz, 4MHz, 5MHz, 8MHz waterproof probes
- Accurate FHR detection with high-fidelity sound effect
- Auto, Average and Manual modes
- Built-in audio recorder
- Built-in rechargeable battery
- Automatic power-off to save power

SonoTrax II Pro



### SD5/SD6 Series Ultrasonic Tabletop Doppler

Ultrasonic Tabletop Doppler SD5 and SD6 are the innovative development of Edan's Fetal Doppler category. The advanced wireless technology truly brings freedom to OB clinical applications. The active noise reduction technology and improved Hi-Fi speakers assure a crystal clear FHR sound. Remote control probe and rolling stand serve you with perfectly convenient working environment that enables you to pay full attention to your patients. The SD Series integrates a crystal-clear informative display providing large-font value of FHR with advanced calculation technique to examine early pregnancies.

- Portable and lightweight design
- Provide 2MHz and 3MHz probe
- Convenient remote control probe with wireless technology (SD6)
- Accurate FHR calculation
- Eye-catching backlight LCD screen
- FHR signal intensity indicator
- Volume level indicator
- Dual high-fidelity speakers
- Built-in recorder
- 1/3min(s) auto shut off when no signal or no operation
- Long lasting rechargeable battery for the main unit
- Complete carting and mounting solution

SD6



SD5



**NEW**

# The Ultimate Rehabilitation Experience

## PA4 Pro

Biofeedback and Stimulation System



The PA4 Pro is a portable biofeedback and stimulation system dedicated to pelvic floor rehabilitation. This all-in-one device provides gold-standard EMG assessment and diverse rehabilitation methods to patients, which also simplifies the operation of PTs.

- 4 EMG/STIM channels & 1 manometric channel
- Integrated Android operation system
- International standard assessment protocols
- Patent algorithm eliminates reaction differences for accuracy
- 8 mainstream pelvic floor therapeutic methods
- Intelligently generate treatment plan for individual
- Automatically adjusted treatment parameter to avoid fatigue
- Powerful network compatibility

### Accessories



Vaginal airbag



Vaginal electrode  
(one-off/reusable)



Anorectal electrode



EMG electrode

## Video Colposcope

With its bright LED cold lighting system, high resolution camera and electronic green filter, EDAN's video colposcope provides a clear vision for colposcopic examination, of which is very important to the gynecologist.

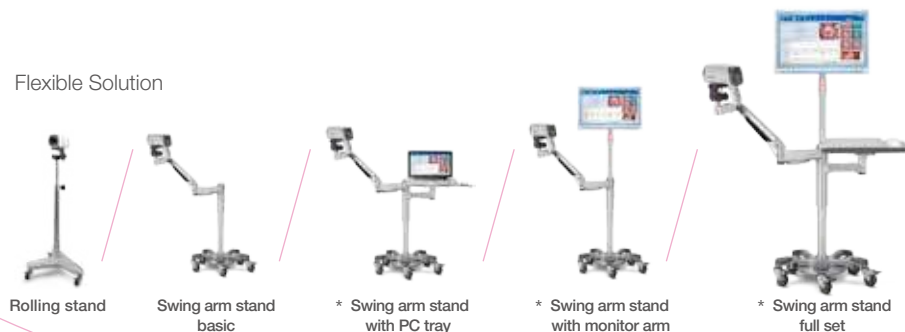
- LED cold lighting system assures real view of tissue
- Advanced and fast auto-focusing system ensures clear image
- Real-time display of magnification
- Electronic green filter enhances vascular image display without compromise of illumination
- Acetic acid and iodine reaction test timer to ensure the capturing on time
- Powerful image display and data management software
- Abundant clinical reference images for confident decision-making
- Amount of clinical cases for better self-learning
- Comprehensive follow-up management
- New innovation – R-way® Evaluation System standardizes the interpretation of colposcopic findings.
- DICOM 3.0 supportive

### Solutions & Configurations

#### One-stop Solution



#### Flexible Solution

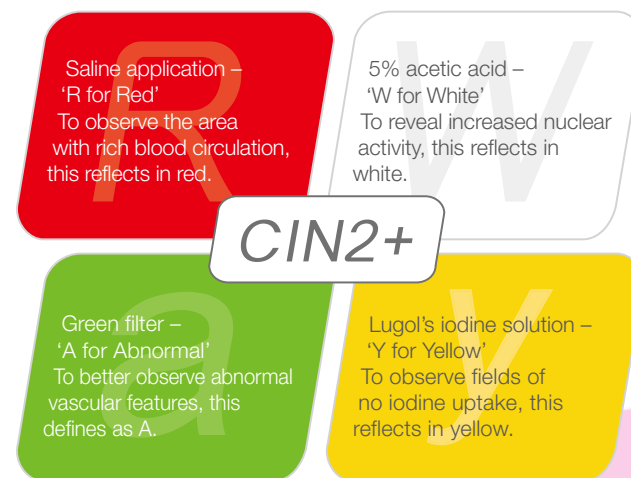


\*The monitor/all-in-one PC/portable computer are not included.

## R-way® Colposcopy Evaluation System

An innovation for guiding and standardizing the interpretation of colposcopic findings, R-way® supplies simplified multiple choice questions, which can be easily handled by clinical users who even with limited experience on the use of colposcope, and address to a preliminary diagnosis.

- Standardized colposcope screening process for better quality control
- Standardized evaluation procedure and report system for quick CIN2+ assessment



# Lighten Your Vision Within a Touch

**Acclarix™ AX3**  
Diagnostic Ultrasound System



## Distinctive Design

- 15" Wide angle HD monitor in 180° rotation
- Humanized dual-sockets design
- Two removable built-in lithium-ion battery providing ultra-long continuous scanning
- Magnesium alloy body with unexpected light weight about 4.5 KG
- Integrated trolley with semi-automatic height adjustment

## Definitive Image Quality

- High fidelity, high channel count architecture
- Tissue Adaptive Imaging (TAI) continuously and automatically optimizes imaging to allow more focus on the patient
  - B-mode: TAI fine tunes multiple parameters for optimal imaging
  - Doppler: TAI adjusts for flow state providing improved continuity, border detection and fill-in

## Intelligent Workflow

- Customizable, gesture-control 10" touch screen to personalize workflow
- One-touch auto optimization for all modes
- Smart EIS platform empowering efficient diagnosis with mighty inner core

Not all products are available in all territories, contact Edan for local availability

**NEW**

# Being Productive Being Trust

Acclarix<sup>™</sup> LX3  
Diagnostic Ultrasound System



## Distinctive Design

- 21.5" High resolution LCD monitor with "C" arm
- 14" High sensitive touch screen with gesture control
- Rotatable user panel with automatic lifting
- 5 Activated transducers sockets
- Dual built-in batteries design support ultra-longscanning
- Detachable gel warmer

## Definitive Image Quality

- High fidelity, high channel count architecture
- Tissue Adaptive Imaging (TAI) continuously and automatically optimizes imaging to allow more focus on the patient
  - B-mode: TAI fine tunes multiple parameters for optimal imaging
  - Doppler: TAI adjusts for flow state providing improved continuity, border detection and fill-in

## Intelligent Workflow

- Customizable, gesture-control touch screen to personalize workflow
- One-touch auto optimization for all modes
- Smart EIS platform empowering efficient diagnosis with mighty inner core

**NEW**

# Empowering Definitive Diagnosis

**Acclarix<sup>™</sup> LX9**  
Diagnostic Ultrasound System



## Distinctive Design

- 21.5" High resolution LCD monitor with "Z" arm
- 14" High sensitive touch screen with gesture control
- Super slim body with light weight
- Rotatable user panel with automatic lifting
- 5 Activated transducers sockets
- Dual built-in batteries design support ultra-long scanning time
- Detachable gel warmer

## Definitive Image Quality

- eTAI (Tissue Adaptive Imaging)
- eSRI (Spackle Reduction & Edge Enhancement Imaging)
- eView (Adaptive Spatial Compound Imaging & Frequency Compound Imaging)
- eBeam (Digital Multi-Beam Beamforming)
- ePIH (Pulse Inversion Harmonic Imaging)
- eContrast (Enhanced Contrast Imaging)
- eLive (Light Rendering)
- Elastography Imaging

## Intelligent Workflow

- Customizable, gesture-control touch screen to personalize workflow
- One-touch auto optimization for all modes (B/Color/PW)
- Smart EIS platform empowering efficient diagnosis with mighty inner core
- Automatic measurement tools with intelligent algorithm (eLV, eVol.Flow, eFollicle, eOB, Auto IMT, Auto NT)

# Acclarix<sup>™</sup> AX8

## Diagnostic Ultrasound System

### Ultrasound in a Whole New Light

#### Distinctive Design

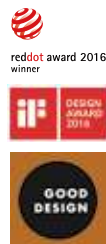
- Sleek, compact, portable design with optional cart
- 15" tilt-and-swivel HD monitor with specially bonded glass to increase durability
- Fully sealed control panel aids in maintaining infection control
- Removable lithium-ion battery with dual touch-sensors to rapidly check battery level

#### Definitive Image Quality

- High fidelity, high channel count architecture
- Tissue Adaptive Imaging (TAI) continuously and automatically optimizes imaging to allow more focus on the patient
  - B-mode: TAI fine tunes multiple parameters for optimal imaging
  - Doppler: TAI adjusts for flow state providing improved continuity, border detection and fill-in

#### Intelligent Workflow

- Dual touch screens streamline workflow
- Customizable, gesture-control 10" touch screen to personalize workflow
- One-touch auto optimization for all modes
- Comprehensive suite of 3D/4D rendering and editing tools
- Connectivity: DICOM, USB, Ethernet, video out, PDF, AVI and BMP file export



# Acclarix<sup>™</sup> LX8

## Diagnostic Ultrasound System

### Prepare to be Enlightened

#### Distinctive Design

- 21" tilt-and-swivel HD, wide-screen, antiglare LCD monitor
- Four active transducer ports
- Down-lit, pull out keyboard for flexible annotation and data entry
- Four-wheel pivot for easy maneuverability

#### Definitive Image Quality

- High fidelity, high channel count architecture
- Tissue Adaptive Imaging (TAI) continuously and automatically optimizes imaging to allow more focus on the patient
  - B-mode: TAI fine tunes multiple parameters for optimal imaging
  - Doppler: TAI adjusts for flow state providing improved continuity, border detection and fill-in

#### Intelligent Workflow

- Customizable gesture-control touch screen to personalize workflow
- One-touch auto optimization for all modes
- Comprehensive suite of 3D/4D rendering and editing tools
- Connectivity: DICOM, USB, DVD, Ethernet, video out, PDF, AVI and BMP file export



## Acclarix<sup>™</sup> AX2

### Diagnostic Ultrasound System

#### Distinctive Design

- 15" Wide angle HD monitor in 180° rotation
- Two removable built-in lithium-ion battery providing ultra-long continuous scanning
- Magnesium alloy body with unexpected light weight about 4.5 KG
- Integrated trolley with semi-automatic height adjustment

#### Definitive Image Quality

- High fidelity, high channel count architecture
- Tissue Adaptive Imaging (TAI) continuously and automatically optimizes imaging to allow more focus on the patient
  - B-mode: TAI fine tunes multiple parameters for optimal imaging
  - Doppler: TAI adjusts for flow state providing improved continuity, border detection and fill-in

#### Intelligent Workflow

- Customizable, gesture-control 10" touch screen to personalize workflow
- One-touch auto optimization for all modes
- Smart EIS platform empowering efficient diagnosis with mighty inner core



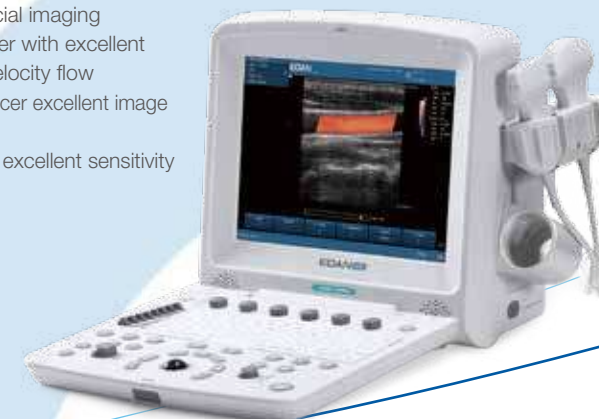
## U60 Diagnostic Ultrasound System

- 15" High resolution LCD screen
- Compact and lightweight design facility mobility
- Built-in battery enables flexible imaging
- Large capacity data storage
- Backlit, easy-to-use control panel
- User defined keys to customize workflow
- Tissue Harmonic Imaging
- Spatial Compounding Imaging
- Speckle Reduction Imaging
- Multi-Beam Technology
- The U60 Diagnostic Ultrasound System provides superb value and excellent imaging quality across a broad range of applications.



## U50 *prime edition* Diagnostic Ultrasound System

- 12.1" High resolution LCD screen
- Compact and lightweight design facility mobility
- Built-in battery enables flexible imaging
- Large capacity data storage
- Easy archiving of patient images using DICOM file storage
- Rapid one button touch save and export of reports as .pdf
- State-of-the-art C5-2b transducer with superb penetration and resolution
- High quality spectral Doppler with HPRF for high-velocity flow
- High-frequency L15-7b transducer with excellent contrast and detail resolution for superficial imaging
- High quality spectral Doppler with excellent sensitivity to capture low velocity flow
- Phased-array P5-1b transducer excellent image quality
- CW Doppler capability with excellent sensitivity to identify high-velocity jets



## U2 *prime edition* Diagnostic Ultrasound System

### Ergonomics design

- 12.1" High resolution LCD screen (19" optional)
- Four active transducer ports
- Four-wheel pivot for easy maneuverability
- Easy archiving of patient images using DICOM file storage
- Rapid one button touch save and export of reports as .pdf

### Abdomen and OB/GYN

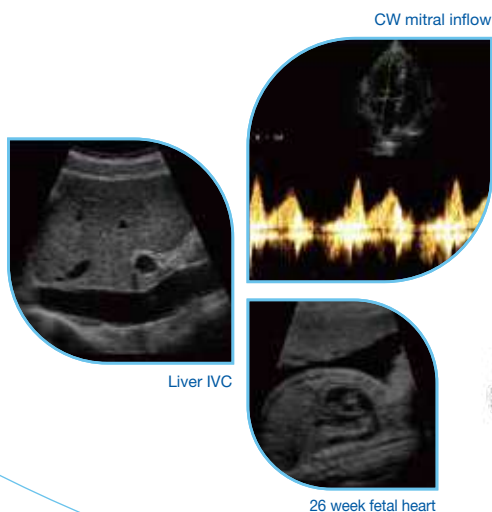
- State-of-the-art C5-2b transducer with superb penetration and resolution
- High quality spectral Doppler with HPRF for high-velocity flow

### Small Parts and Musculoskeletal

- High-frequency L15-7b transducer with excellent contrast and detail resolution for superficial imaging
- High quality spectral Doppler with excellent sensitivity to capture low velocity flow

### Cardiac Screening Capability

- Phased-array P5-1b transducer excellent image quality
- CW Doppler capability with excellent sensitivity to identify high-velocity jets



## DUS60 Diagnostic Ultrasound System

- 12.1" TFT-LCD screen
- Weight 7.1kg
- Two transducer connectors
- Multi-frequency transducer technology
- Pulsed wave Doppler
- Multi-beam technology
- Harmonic imaging
- Speckle reduction technology
- Synthetical receive aperture technology
- IP (Image Processing) function
- 256-frame cine loop memory
- Multi-language function
- Two USB ports
- Built-in rechargeable Li-ion battery (optional)
- DICOM 3.0 (optional)
- Large capacity data storage (optional)
- Footswitch (optional)
- Mobile trolley (optional)
- Carrying case (optional)
- Needle-guide brackets (optional)



Compact  
Versatile  
Efficient





# Tailored Monitoring for Each Patient

## elite V8/V6/V5 Modular Patient Monitor



elite V5

elite V6

elite V8

- 17"/15"/12.1" high resolution color TFT-LCD display
- Full touch screen operation with customizable shortcut menu
- Echo-friendly no-fan design
- Built-in Modified Early Warning Score (MEWS) system
- Both non-volatile built-in memory and USB/SD external storage available
- VGA/DVI output and analog output
- LAN/Wi-Fi connection with DHCP supported
- Barcode scanner supported through USB
- Bi-directional communication with MFM-CMS
- Support Ethernet printer
- Seamlessly interact with HIS/EMR via HL7

### Parameter Options for Main Module (XM and iM20):

3/5-lead ECG, RESP, SpO<sub>2</sub>, NIBP, 2-TEMP, PR,  
6-12-lead ECG, Nellcor SpO<sub>2</sub>, 2-IBP (ICP), C.O., CO<sub>2</sub>

### Parameter Options for Standalone Modules:

IBP (ICP), C.O., ICG, CO<sub>2</sub>, AG/O<sub>2</sub>, BIS, EEG, NMT, RM

### Connection with external devices (V-Link module):

- LIDCO machine
- Anesthesia machine
- Ventilation machine



## iM20 Transport Patient Monitor

- 5" high resolution color TFT-LCD display
- Full touch screen operation with customizable shortcut menu
- Echo-friendly no-fan design
- Ambulatory designs with IP44 waterproof & dustproof, 1.2m shock resistance
- Up to 33 types of ARR can be detected with optimized iSEAP™ ECG algorithm
- SEMIP® 12-lead diagnosis algorithm with 208 kinds of analysis results
- iMAT™ SpO<sub>2</sub> algorithm with outstanding motion resistance and low perfusion resistance performance
- Perfusion Index (PI) measurement as blood perfusion indicator
- Optional Nellcor SpO<sub>2</sub> with SatSeconds™ technology
- iCUFS™ NIBP algorithm optimized for cardiac patients, hypertensive patients, and neonatal patients
- Optional 2-channel invasive blood pressure
- The plug-and-play EFM module using together with iM20 for capnograph monitoring
- Large capacity built-in memory for power-off storage
- Built-in Wi-Fi as standard configuration
- Bi-directional communication with MFM-CMS central Station
- Seamlessly interact with HIS/EMR via HL7

### Standard Parameters:

- 3/5-lead ECG, RESP, SpO<sub>2</sub>, NIBP, 2-TEMP, PR

### Optional Parameters:

- 12-lead ECG, Nellcor SpO<sub>2</sub>, SunTech NIBP, 2-IBP (ICP), Respironics sidestream CO<sub>2</sub> (EFM module)



**NEW**

# Be informative be intelligent

## iX15/iX12/iX10

Multi-Parameter Patient Monitor



iX15

iX12

iX10



- 15.6"/13.3"/10.1" high resolution color TFT-LCD display
- Full touch screen operation with customizable shortcut menu
- Widescreen anti-glare design, providing a full range of comfortable observation experience
- Pure glass panel, easy to clean and disinfect
- iSEAP™ ECG algorithm with up to 33 types of ARR detection
- iMAT™ SpO<sub>2</sub> algorithm with motion & low perfusion resistance performance and pulse variation index monitoring
- Extended CCHD screening with Double SpO<sub>2</sub> configuration
- Optional Nellcor SpO<sub>2</sub> with SatSeconds™ technology
- iCUFFS™ NIBP algorithm optimized for cardiac patients, hypertensive patients, and neonatal patients
- iFAST™ NIBP algorithm enables a quick blood pressure measurement during the cuff inflating
- Continuous Non-invasive Blood Pressure (CNBP) monitoring technology, minimize the pain of patients & maximize the safety of clinical work
- iCARB™ CO<sub>2</sub> algorithm with intelligent pseudo wave identification technology
- iAPRB™ AG algorithm with high performance in anesthetic gases analysis with paramagnetic O<sub>2</sub> detection
- Built-in Early Warning Score system and Glasgow Coma Scale
- USB/SD external storage available
- Barcode scanner supported through USB
- Bi-directional communication with MFM-CMS
- LAN/Wi-Fi connection with DHCP supported
- Seamlessly interact with HIS/EMR via HL7

# Cross departments, Corss devices

## MFM-CMS Central Monitoring System

### iT20 Telemetry System

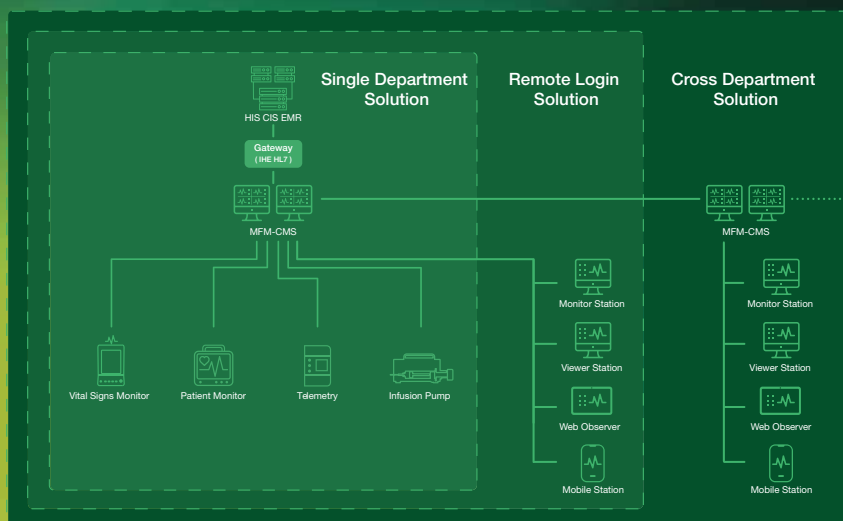
- Lightweight (<140g) and compact design
- Built-in Wi-Fi module
- OLED display
- IPX7 waterproof level
- AA battery power supply with 20 seconds hot-swapping
- Nurse call and call patient function
- Smart lead map and auto lead identification

#### Standard Parameters:

- 3/5-lead ECG, HR, RR (Not available in the US)

#### Optional Parameters:

- SpO<sub>2</sub>, PR



Max. 4 screens



Max. 128 patients/sector



Data review



Remote control

- Centralized monitoring and data management for patients
- Quadruple-screen display
- Infusion & Syringe pump monitoring
- Viewing parameters of ventilator and anesthesia machine
- Nursing system for spot-check
- Patient-centric report viewing system (reports generated from i15, m16 and SE-1515)
- Client terminal for remote visiting (via Windows, iOS and Android software or Web browser)
- Distributed Systems for cross applications in multiple departments
- User authorizations control
- User-friendly UI design and optimized workflow
- Batch management of alarm settings for all monitors
- Monitoring data statistic and analysis
- Historical data review for off-line monitors
- Drug dose/Hemodynamic/Oxygenation/Renal function/Ventilation calculation
- Remote patient information management and NIBP monitoring
- Time synchronization
- Call patient in case of an emergency (for iT20 only)
- LAN/WLAN connection with EDAN's monitors
- Support HL7/XML connection to HIS (with Gateway)

## iM80/iM70/iM60/iM50 Multi-Parameter Patient Monitor

### Comprehensive Monitoring from Acute to Sub-acute Cares

- 15"/12.1"/10.4"/8.4" high resolution color TFT-LCD display
- Full touch screen operation with customizable shortcut menu
- Echo-friendly no-fan design
- Up to 33 types of ARR can be detected with optimized iSEAP™ ECG algorithm
- SEMIP® 12-lead diagnosis algorithm with 208 kinds of analysis results
- iMAT™ SpO<sub>2</sub> algorithm with outstanding motion resistance and low perfusion resistance performance
- Perfusion Index (PI) measurement as blood perfusion indicator
- Optional Nellcor SpO<sub>2</sub> with SatSeconds™ technology
- iCUFS™ NIBP algorithm optimized for cardiac patients, hypertensive patients, and neonatal patients
- iCARB™ algorithm with intelligent CO<sub>2</sub> pseudo wave identification technology
- Built-in Modified Early Warning Score (MEWS) system helps to identify patients' clinical conditions
- Both non-volatile built-in memory and USB external storage available
- VGA output and analog output
- Optional built-in Wi-Fi
- LAN/Wi-Fi connection with DHCP supported
- Barcode scanner supported through USB
- Bi-directional communication with MFM-CMS
- Support Ethernet printer
- Seamlessly interact with HIS/EMR via HL7

#### Standard Parameters:

- 3/5-lead ECG, RESP, SpO<sub>2</sub>, NIBP, 2-TEMP, PR

#### Optional Parameters:

- 12-lead ECG, Nellcor SpO<sub>2</sub>, SunTech NIBP (iM80/iM70/iM60), 2-IBP (ICP), 4-IBP (iM80), C.O. (iM80/iM70/iM60), Quick TEMP (iM50), EDAN G2 CO<sub>2</sub> (sidestream), Respironics CO<sub>2</sub> (sidestream/mainstream), Masimo AG/O<sub>2</sub> (iM80/iM70), Dräger AG/O<sub>2</sub> (iM80)



## X12/X10/X8 Patient Monitor

### Be extra smart, be extra refined

- 12.1"/10.1"/8 High-resolution color TFT display
- Full touch screen operation with customizable shortcut menu
- Ultra slim design with cable-receiving carry handle
- Water-proof silicon buttons with knob control
- Echo-friendly no-fan design
- 3/5/6/12-lead electrode placements with auto lead type detection
- Up to 33 types of ARR can be detected with optimized iSEAP™ ECG algorithm
- iMAT™ SpO<sub>2</sub> algorithm with outstanding motion resistance and low resistance performance
- iCUFS™ NIBP algorithm optimized for cardiac patients, hypertensive patients and neonatal patients
- Unique NIBP clean mode and dual dust filter design makes no blockage inside and provides accurate NIBP readings
- iCARB™ algorithm with intelligent CO<sub>2</sub> pseudo wave identification technology
- Superior water trap with smart air channel inside, prevent water leakage
- Modified Early Warning Score (MEWS) helps to identify patients' clinical conditions
- Large non-volatile built-in memory and USB external memory available
- Optional Nurse call/Analog output/Defib sync/VGA output
- LAN/Wi-Fi connection with DHCP supported
- Seamless interact with HIS/EMR via HL7
- Ethernet printer and barcode scanner supported

#### Standard Parameters:

- 3/5-lead ECG, RESP, EDAN SpO<sub>2</sub>, EDAN NIBP, TEMP (X8: 1-TEMP, X10/X12: 2-TEMP)

#### Optional Parameters:

- 6/12-lead ECG, IBP (X10, X12 : 2-IBP), C.O. (X12), EDAN G2 CO<sub>2</sub>



## iM3 Vital Signs Monitor

### A slim monitoring experience

- 8" color TFT-LCD screen
- Light weight, ultra-slim and ergonomical design
- Full touch screen operation with customizable shortcut menu
- Echo-friendly no-fan design
- 360° visual alarm light
- Unique cable-receiving carry handle
- Adaptive work modes to serve different clinical applications
- Power-off data storage
- Flash disk supported
- Plug and play module design for temperature configurations (optional)
- Built-in barcode scanner (optional) supports QR code
- LAN/Wi-Fi (optional) /e-link (optional) connectivity
- Thermal recorder (optional) supported
- Bi-directional communication with MFM-CMS
- Seamlessly interact with HIS/EMR via HL7

#### Standard Parameters:

- SpO<sub>2</sub>, PR, NIBP

#### Optional Parameters:

- Nellcor SpO<sub>2</sub>, SunTech NIBP, Quick Temp, Infrared Ear Temp, Temporal Temp, Forehead Temp



Full-touch Operation

Built-in Barcode Scanning

Cable-receiving Design



## iM3s Vital Signs Monitor

### Pocket spot checks at all times

- 5" capacitive screen with high resolution
- Handheld design with tabletop expansion available
- Touch operation with gesture control
- Adaptive work modes dedicate to spot checks applications
- Powerful data storage
- IP44 waterproof and dustproof
- Plug and play module design for temperature configurations (optional)
- Built-in barcode scanner (optional) supports QR code
- Wi-Fi/e-Link (optional) connectivity
- Thermal recorder (optional) supported

#### Standard Parameters:

- SpO<sub>2</sub>, PR, NIBP

#### Optional Parameters:

- Infrared Ear Temp, Temporal Temp, Forehead Temp



with CS-04 charger stand



with CS-05 charger stand, thermal recorder and temperature module

## M3/M3A Vital Signs Monitor

- Lightweight and portable design
- 5.6" color TFT-LCD screen (M3)
- 3.5" color TFT-LCD screen and LED segment display (M3A)
- Flexible configurations to meet different clinical needs
- Auto/Manual/Continuous/Average BP mode
- Quick switch button for patient type
- Power-off data storage (M3A only)
- USB flash disk supported (M3 only)
- Barcode scanner supported through USB
- Nurse call function
- LAN/Wi-Fi (optional) connectivity
- Bi-directional communication with MFM-CMS
- Seamlessly interact with HIS/EMR via HL7
- Complete and flexible mounting solutions

### Available Parameters:

- SpO<sub>2</sub>, Nellcor SpO<sub>2</sub> (M3 only), NIBP, PR, Quick Temp, Infrared Ear Temp



## M3B Vital Signs Monitor

- 5.6" color TFT-LCD screen
- Numeric & graphic display of capnography and plethysmogram
- Powerful data storage capacity with USB flash disk
- Barcode scanner supported
- Nurse call function
- Built-in rechargeable Li-ion battery
- LAN/Wi-Fi (optional) connectivity
- Bi-directional communication with MFM-CMS
- Seamlessly interact with HIS/EMR via HL7
- Complete and flexible mounting solutions

### Standard Parameters:

- SpO<sub>2</sub>, PR, Respirionics CO<sub>2</sub> (sidestream/mainstream)

### Optional Parameters:

- Nellcor SpO<sub>2</sub>



## H100B/H100N Handheld Pulse Oximeter

- LCD display with backlight control
- Numeric display with plethysmogram display
- Trend review and pulse-tone modulation (Pitch Tone)
- IP22 waterproof & dustproof
- Nellcor OxiMax™ inside (H100N only)
- Adjustable audio and visual alarms
- Powerful data storage capacity (up to 300 hours)
- PatientCare Viewer software for PC data management
- Convenient AA size batteries for up to 48 hours of work
- Optional battery charger stand
- Automatic power-off function for power saving

### Measuring Parameters (H100B):

- SpO<sub>2</sub>, PR

### Measuring Parameters (H100N):

- Nellcor SpO<sub>2</sub>, PR, TEMP



## H10 Finger Oximeter

- Compact & lightweight design
- SpO<sub>2</sub>, PR, PI, Bar Graph and Plethysmogram display
- 4-direction display with 4 display modes
- Modified based on EDAN iMAT™ algorithm
- Perfusion Index monitoring
- Light shield design
- 10-level adjustable brightness
- Low power consumption
- Automatic power-off design
- Battery indicator
- Pulse sound indication



# Specialize Your Cardiac Practice

## SE-18

18/15/12/9-lead ECG



The flagship ECG SE-18 is a professional ECG system, delivering advanced functions and reliable interpretation to increase clinicians' productivity. It supports standard 12-lead ECG and extensional ECG examination of 15/18 leads with additional pluggable leadwires. With built-in DICOM and HL7 gateway, clinicians can improve workflow by wirelessly connecting SE-18 with EMR systems.

- Support 15/18-lead real-time sampling and analyzing, which is specialized for accurate Myocardial Ischemia / Infarction diagnosis
- 15" color touch screen and water-proof alphanumeric keyboard make each necessary operation faster
- Acquisition up to 30 minutes, which allows clinician to review and select the best typical waveform to analyze and print
- Wireless capability allows report to be sent to the EMR/HIS/PACs anytime, anywhere
- Authoritative Glasgow algorithm provides reliable diagnosis

# Tailored for Advanced Cardiac Practice

**SE-1202**  
Twelve-channel ECG



SE-1202 is the new flagship 12-channel ECG that empowered by EDAN cutting-edge technology. The streamlined workflow and intuitive tools help clinicians make fast and accurate diagnosis. With built-in bi-directional DICOM communication module, SE-1202 always embraces connectivity to offer a hassle-free experience.

- 10" High resolution color touch screen
- Glass touch panel supports liquid cleaning
- Complete digital filters, resisting baseline drift, AC and EMG interference
- 80000Hz sampling rate for Pacemaker detection
- Color-coded Signal Quality Indication
- Acquisition up to 30 minutes, which allows clinician to review and select the best typical waveform to analyze and print
- Wireless capability allows report to be sent to the EMR/HIS/PACs anytime, anywhere
- Authoritative Glasgow algorithm provides reliable diagnosis
- 1000 ECG recordings storage capacity
- Extend printing once arrhythmia is detected
- Support laser printer via USB port



**NEW**

# Work automagically

## SE-1200/1201 Pro

Twelve-channel ECG



SE-1200 Pro



SE-1201 Pro



Combining portability and top-industrial performance, the SE-1200 Pro and SE-1201 Pro can be flexibly applied in multiple clinical scenarios of cardiac scanning. They provide more than easy operation and efficient workflow, but also a secure data management and network solutions.

- 8" (SE-1200 Pro) and 10.1" (SE-1201 Pro) high resolution color touch-screen
- Glass touch panel supports liquid cleaning
- Color-coded Signal Quality Indication
- Real-time ectopic heart beat detection with color indication
- High sampling rate for ECG & pacemaker signals
- On-Screen Amplification & Measurement
- ECG Comparison provides a visual demonstration of therapeutic progress
- Large storage capability
- USB ports for barcode scanner, keyboard and mouse Optional
- Built-in Barcode Scanner for SE-1201 Pro
- Wireless connection to IT systems
- Bidirectional communication with HIS/EMR/PACs
- Encrypted Transmission via SFTP and SSL
- DICOM protocol transmission
- Multiple report formats

# Thin, yet thinking wise

## iSE Series 18/12-lead ECG

Looking and working like a tablet, the iSE series intends to create an exceptional mobile experience, and also to build a seamless data connection to the IT systems. It is competent to fit into mobile applications like ambulance or first-aid, as well as modern paperless informationized hospitals.

- 10.1" high resolution color touch screen
- Multi-touch GUI
- Easy for cleaning and disinfection
- Ultra-lightweight, less than 1kg
- Support 12-lead and 18-lead examination
- High sampling rate for ECG & pacemaker signals
- Self-adaptive filter technology
- Proprietary SEMIP algorithm with Brugada Syndrome analysis
- Up to 30 minutes sampling
- On-Screen Amplification & Measurement
- Compare reports on screen
- Large storage capability
- USB ports for barcode scanner, keyboard and mouse
- Fingerprint lock for data security



- Wire/Wireless connection to IT systems
- Direct communication with HIS/EMR/PACs
- Encrypted Transmission via SFTP and SSL
- DICOM protocol support
- Multiple report formats support
- Wi-Fi, USB, and thermal printer support

# Boost Your Productivity in All Respects

## SE-1515

### Workstation

SE-1515 ECG Workstation is PC based software that integrates practical functions – ECG Sampling/ Analyzing, Data Management System and ECG Gateway - all in one. This system provides flexible access to diverse applications, improving your clinical efficiency in all respects.

#### PC ECG Software

- Automatic arrhythmia detection and indication
- Reliable automatic interpretation with feature description
- Supports final ECG report edit with electronic signature
- Optional Stress ECG and Ambulatory ECG
- Optional wireless 12-lead or wired 18-lead sampling box

#### The DE18 sampling box

- Compact and user-friendly design
- Separated leadwires
- Color-coded signal quality indicator
- One-button operation



**DE18**  
18/16/15/12/9-lead  
Wired Sampling Box



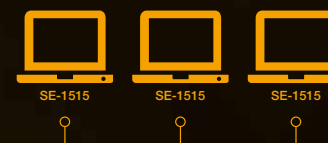
**DX12**  
12/9-lead  
Wireless Sampling Box



**DP12**  
12/9-lead  
Wired Sampling Box



HIS/CIS/EMR/PACs



SE-1515

SE-1515

SE-1515



SE-1515



ECG Network  
Management

## Centralized ECG Management

Working as a data management station as well as a gateway, SE-1515 connects ECG devices and upper systems together on a bi-directional basis, including ECG report management and patient worklist assignment. Multiple remote users may also log in with assigned ID and corresponding authorities.

- Intuitive interfaces and user-friendly design
- Resting ECG/Stress ECG/Holter ECG report management
- Multi-format reports: PDF/XML/SCP/DICOM
- User-defined report structure
- Massive data sharing and management solution
- Electronic signature on ECG reports
- Data backup and restore
- Billing statistics analysis
- HL7/DICOM protocol with worklist support
- ECG Device Time Synchronization

**NEW**

# When ECG meets blood pressure

## Holter ECG and ABP 2-in-1 System

Being a compact digital recorder, the SA-20 provides continuously ECG and blood pressure monitoring for all-day. With the help of the powerful and intelligent analysis software, potential cardiac disease, hypertension or hypotension could be discovered by an optimized workflow.

### Holter 2 in 1 Software

- User-defined workflow
- Smart QRS template classification and sub-template categorizing
- Automatic ST elevation /depression analysis
- Automatic atrial fibrillation/flutter analysis
- Ambulatory Arterial Stiffness Index (AASI)
- Pulse Pressure (PP)
- Day & Night BP profile display with cardiac events

### Holter 2-in-1 Recorder SA-20

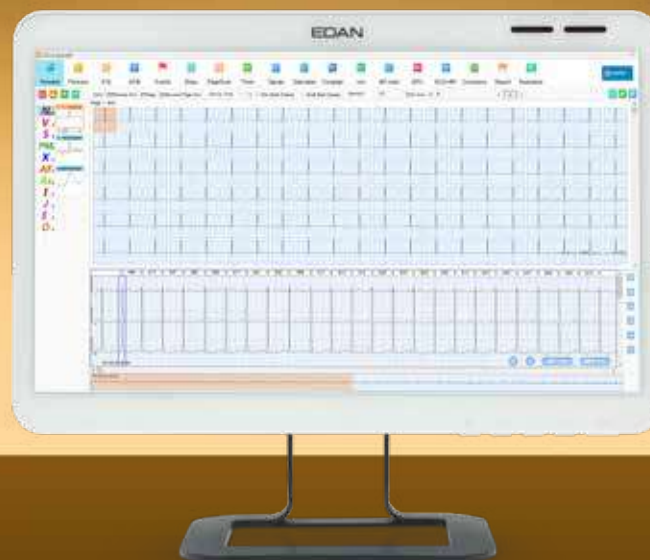
- Compact and lightweight (200g)
- Water-proof and Dust-proof
- 3/12-lead digital recording
- Pacemaker detection
- Wide blood pressure measurement ranges
- Up to 48 hours recording with two AA battery



SA-20



SA-10



2 in 1 Software



SE-2003/2012



SE-2003A/2012A

### Holter ECG Recorder SE-2003/2012(A)

Both 3 and 12-channel Holter recorders are available to provide a comprehensive long-term ECG monitoring.

- Recorder weighs only 50g/75g
- Water-proof and Dust-proof
- 3/12-lead digital recording
- Real-time waveform display
- Up to 8 days recording with one AAA battery
- Pacemaker detection

### Holter BP Recorder SA-10 (ABPM)

The SA-10 is a 24-hour ambulatory blood pressure monitor with stylish design, state-of-the-art blood pressure monitoring technologies, developed to avoid white coat hypertension, masked hypertension and sustained hypertension.

- Compact and lightweight (160g)
- Low Noise
- Water-proof and Dust-proof
- Overtime and Overpressure Protection
- AAMI Validation
- Body posture detecting
- Low power consumption for long working time

## SE-1200 Express Twelve-channel ECG

- 8" high resolution color touch-screen
- Color-coded Signal Quality Indication
- 800 ECG recordings storage capacity
- Extend printing once arrhythmia is detected
- Support laser printer via USB port
- Glasgow ECG Interpretation

### Optional:

- PC-based data management software (SE-1515 Data Management System)
- Advanced analysis: Vector ECG



## SE-1201 Twelve-channel ECG

- Compact and portable design
- 7" Color LCD display with optional touch screen
- Color-coded Signal Quality Indication
- 800 ECG recordings storage capacity
- Extend printing once arrhythmia is detected
- Support laser printer via USB port
- Glasgow ECG Interpretation

### Optional:

- PC-based data management software (SE-1515 Data Management System)
- Advanced analysis: Vector ECG



## SE-601 Series Six-channel ECG

- Compact and lightweight design
- Alphanumeric keyboard and one-button operation
- 800 ECG recordings storage capacity
- Built-in rechargeable Li-ion battery
- SEMIP interpretation tested with authoritative CSE/AHA/MIT database
- Support external printer via USB port
- Data transmitting to PC via LAN/Wi-Fi

### Optional:

- PC-based data management software (SE-1515 Data Management System)
- Glasgow ECG Interpretation



## SE-301 Three-channel ECG

- Ultra-compact and lightweight design
- 5" High resolution color touch screen
- Complete digital filters, resisting baseline drift, AC and EMG interference
- 12-lead simultaneous acquisition
- Support linear/2D barcode scanner
- SEMIP interpretation tested with authoritative CSE/AHA/MIT database
- Color-coded Signal Quality Indication
- 800 ECG recordings storage capacity
- Support USB flash disk and micro SD card to extend memory
- Built-in rechargeable Li-ion battery
- Support laser printer via USB port

### Optional:

- PC-based data management software (SE-1515 Data Management System)
- Glasgow ECG Interpretation
- SIM card data transmission



Full-touch  
Operation



Built-in SIM card  
data transmission



reddot award 2016  
winner



## SE-3 Three-channel ECG

- Portable and lightweight design
- Foldable LCD screen
- Support linear/2D barcode scanner
- SEMIP interpretation tested with authoritative CSE/AHA/MIT database
- 500 ECG recordings storage capacity
- Support USB flash disk to extend memory
- Support external printer via USB port

### Optional:

- PC-based data management software (SE-1515 Data Management System)



**NEW**

# A Brighter Solution of Critical Care

**i20**

Blood Gas and Chemistry Analysis System



## Next-Generation Test Cartridge

- Microfluidics combines with photoluminescence biosensor achieve accurate and reliable test result
- More than 40 parameters in one cartridge provides effective critical care to the patients
- Innovative optical fluorescence microchip allows long storage life at room temperature

### Variety of test Cartridges

iBG10-OXI*	pH, pO <sub>2</sub> , pCO <sub>2</sub> , Na <sup>+</sup> , Cl <sup>-</sup> , K <sup>+</sup> , Ca <sup>++</sup> , Lac, Glu, sO <sub>2</sub> , tHb, FCOHb, FHHb, FMetHb, FO <sub>2</sub> Hb
iBG10*	pH, pO <sub>2</sub> , pCO <sub>2</sub> , Na <sup>+</sup> , Cl <sup>-</sup> , K <sup>+</sup> , Ca <sup>++</sup> , Lac, Glu, tHb
iBG8-OXI	pH, pO <sub>2</sub> , pCO <sub>2</sub> , Na <sup>+</sup> , Cl <sup>-</sup> , K <sup>+</sup> , Ca <sup>++</sup> , sO <sub>2</sub> , tHb, FCOHb, FHHb, FMetHb, FO <sub>2</sub> Hb
iBG8	pH, pO <sub>2</sub> , pCO <sub>2</sub> , Na <sup>+</sup> , Cl <sup>-</sup> , K <sup>+</sup> , Ca <sup>++</sup> , tHb
iBG3	pH, pO <sub>2</sub> , pCO <sub>2</sub> , tHb

Calculated parameters: cH<sup>+</sup>, pH(std), HCO<sub>3</sub><sup>-</sup>(act), HCO<sub>3</sub><sup>-</sup>(std), tCO<sub>2</sub>, BE(ef), BE(act), BE(B), BB(B), ctO<sub>2</sub>, P50, sO<sub>2</sub>(est), Ca<sup>++</sup>(7.4), AnGap, Hct(est), pO<sub>2</sub>(A-a), pO<sub>2</sub>(a/A), RI, pO<sub>2</sub>/FIO<sub>2</sub>, cH<sup>+</sup>(T), pH(T), pCO<sub>2</sub>(T), pO<sub>2</sub>(T), pO<sub>2</sub>(A-a)(T), pO<sub>2</sub>(a/A)(T), RI(T), pO<sub>2</sub>(T)/FIO<sub>2</sub>, mOsm

\*coming soon

### Specification

Test Principle	Optical Fluorescence
Throughput	Results in 60s after sample aspiration
Sample volume	65µL / 95µL
Battery	6800mAh
Display	10.1 inch color touch screen, 1280*800
Dimensions(L*W*H)	245*271.4*292.18 mm
Weight	< 5 Kg (battery included)
Operation Environment	10°C-30°C; %RH: 25%-80%; 57 -106.6 KPa



## i15 Blood Gas and Chemistry Analysis System

As a brand new POCT device specially designed for critical cares, i15 is portable, easy to use and performs flexible tests on a single disposable cartridge. i15 brings new era of blood gas and chemistry analysis, and it enables you to more quickly and effectively monitor and manage your patients.

- Small size and light weight with build-in rechargeable battery
- 3-step operation procedure to increase efficiency
- Complete maintenance free
- Standby at any time without reagent consumption
- Auto sample aspiration and calibration to ensure accuracy and reliability
- Seamless integration with LIS/HIS through wired and wireless networking
- 10,000 patient data storage and USB data transfer
- User-friendly interface with color LCD touch screen and “traffic light” indicator
- Build-in multimedia tutorials
- Flexible tests combination on single cartridge
- Long cartridge storage life at room temperature, ready to use at any time

### Variety of test Cartridges

<b>BG3</b>	pH, pO <sub>2</sub> , pCO <sub>2</sub>
<b>BG4</b>	pH, pO <sub>2</sub> , pCO <sub>2</sub> , Lac
<b>BC4</b>	Na <sup>+</sup> , K <sup>+</sup> , Cl <sup>-</sup> , Ca <sup>++</sup> , Hct
<b>BG8</b>	pH, pO <sub>2</sub> , pCO <sub>2</sub> , Na <sup>+</sup> , K <sup>+</sup> , Cl <sup>-</sup> , Ca <sup>++</sup> , Hct
<b>BG9</b>	pH, pO <sub>2</sub> , pCO <sub>2</sub> , Na <sup>+</sup> , K <sup>+</sup> , Cl <sup>-</sup> , Ca <sup>++</sup> , Hct, Glu
<b>BG10</b>	pH, pO <sub>2</sub> , pCO <sub>2</sub> , Na <sup>+</sup> , K <sup>+</sup> , Cl <sup>-</sup> , Ca <sup>++</sup> , Hct, Glu, Lac

### 15 Electrodes in ONE Cartridge!

15 Measured Parameters and 20+ Cal. Parameters



## m16 Magnetic Immunoassay Analysis System

### Where innovation meets accuracy

The m16, a POCT magnetic immunoassay analyzer with advanced Magnetic bead-linked GMR (Giant Magnetoresistance) biosensor, can maximize and shorten the clinical laboratory's turn around period, optimize the clinical treatment's efficiency, thereby providing faster, more accurate results.

- Innovative micro-array sensor and micro-fluidic technology
- Flexible menu on single cartridge
- High sensitivity and accuracy
- Imbedded /dedicated sensor for real-time calibration
- Advanced Magnetic bead-linked GMR biosensor improves precision and accuracy
- Zero maintenance
- Capable of running various sample types: whole blood, plasma, serum
- 50µl sample volume for multi-parameter cartridge
- Get fastest report within 9 minutes

### Variety of test Cartridges

<b>Cardiac markers</b>	cTnI, Myo, CK-MB, NT-proBNP, D-Dimer   cTnI, Myo, CK-MB cTnI, NT-proBNP   hs-cTnI   cTnI   NT-proBNP   D-Dimer H-FABP   Lp-PLA2
<b>Inflammatory</b>	PCT, CRP, SAA/IL-6   D-Dimer, hs-CRP   PCT



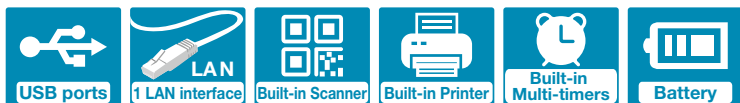
## iCT3 Colloidal Gold-labeled Immunoassay Analyzer

**NEW**

### Make a change in real-time diagnostics

The 2<sup>nd</sup> generation of Edan's POC(Point-of-Care) Immunoassay system provide the iteration of software for more user-friendly solution and advanced detection module. Smaller and portable iCT3 makes faster result display possible in wider availability to scenarios.

Flexible testing option within the comprehensive test menu that support the rapid and cost-effective healthcare service to patient, especially in OR, ER, ICU and clinics, GP offices.



### Variety of test Cartridges

<b>Thyroid Function</b>	TSH, T3, T4, FT3, FT4
<b>Inflammation</b>	PCT, hsCRP/CRP
<b>Cardiac Markers</b>	D-Dimer, NT-proBNP, cTnI/CK-MB/Myoglobin
<b>Fertility</b>	β-HCG, LH, FSH, E2, Progesterone, PRL, Testosterone
<b>Others</b>	HbA1c, 25-OH Vitamin-D

### Specification

<b>Test Principle</b>	Colloidal gold lateral flow immunoassay
<b>Throughput</b>	1 test each, >400 Tests per hour (Quick Mode)
<b>Sample volume</b>	Not more than 100μL
<b>Storage</b>	Up to 50,000 patient data
<b>Connectivity</b>	Direct LIS/HIS
<b>Battery</b>	5000mAh rechargeable, 12-hours standby (>200 Tests)
<b>Display</b>	8 inch color touch screen
<b>Dimensions(L*W*H)</b>	220*180*210 mm
<b>Weight</b>	≈3kg(battery included)
<b>Operation Environment</b>	10°C-30°C; %RH: 25%-80%; 70 -106 KPa

### Fast and reliable diagnostic results to patients in Point-of-care for better services

- Room temperature storage for Test cassette
- Get results in 5-20 minutes, 7-8S testing in Quick mode
- Each item includes the calibrator and Controls
- Triple guarantee of the results





**NEW**

# Deliver reliable results with maximum uptime

## H60S

5-Part Hematology Analyzer



Sensitive flagging that assist your insights

Details that lighten your work

Intuitive system that simplifies your handing



We invent the requirements and explore the pain points to develop a new concept in hematology. The hematology approach has been in the market for decades, but many challenges haven't been tackled. Adapted to the fundamental but significant appeal points, the Edan H60S can well suit your needs.

The Edan H60S is positioned in low to moderate volume laboratories, committed to lightening your work with an enjoyable experience. Equipped with an integrated, intuitive operation system, it brings a reliable system with clinical values and effective cost control. The Edan H60S is tailored to you.

- 25 reportable parameters and 6 RUO parameters
- Continuous loading with 60 samples capacity
- Automatic rotation and recognition of sample ID
- Excellent abnormal sample flagging (including NRBC, IG)
- Reagent management via RFID card
- Support workload up to 300 tests per day
- Sample rack status real-time monitoring display
- Two routine reagents to support test
- 60 tests per hour
- 12 inch large touch screen

Not all products are available in all territories, contact Edan for local availability

## H60 5-Part Hematology Analyzer

**NEW**

### Deliver reliable results with maximum uptime

With high technology of laser, flow cytometry, impedance and colorimetric, H60 can provide rapid and reliable test results from as low as 16µL of blood sample. Also requiring the least reagent numbers can still ensure accurate and trustable results. H60 is a reliable system you can trust on.

The Edan H60 is positioned in low to moderate volume laboratories, committed to lightening your work with an enjoyable experience. Equipped with an integrated, intuitive operation system, it brings a reliable system with clinical values and effective cost control. The Edan H60 is tailored to you.

- 25 reportable parameters and 6 RUO parameters
- Excellent abnormal sample flagging (including NRBC, IG)
- Reagent management via RFID card
- Two routine reagents to support test
- 60 tests per hour
- 12 inch large touch screen



## H30 Pro 3-Part Hematology Analyzer

### Empowering CBC test with maximum capabilities

H30 Pro is a robust 3-part hematology analyzer integrating a range of advanced features intended for a cost-minded and quality-focused clinical laboratory. The enhanced specification expands clinical capabilities; The brand new operating system simplifies the working process; The quality hardware components ensure reliable performance, and the improved fluidic system reduces reagent consumption. To pursuit higher satisfaction, H30 Pro empowers CBC test with maximum capabilities by

- Offering up to 23 parameters including PLR and NLR
- Extending linearity range for WBC and PLT
- Differentiating WBC, RBC, and PLT with dynamic threshold
- Requiring small sample volume - 10 µL for pediatric samples and difficult draw
- Simplifying the working process with an intuitive operation system
- Lowering cost with two routine reagents and 120 days' on-board stability
- Managing reagent via RFID to secure distributors' business

#### Expanded clinical capabilities

#### Simplified working process

#### Effective cost control



## H50 5-Part Hematology Analyzer

### Ingenuity for 5-Part

H50, the much updated 5-part auto hematology analyzer with the state of art technology, simple operations, fewer reagents, better performance, advanced internal structure by design, all in a smaller more affordable package that will fit any clinician budget and space.

- 25 reportable parameters and 4 research parameters with 3 histograms and 1 scattergram
- Throughput: 60 samples per hour
- High efficiency on reagents with only 3 routine reagents
- Low reagent consumption
- Intelligent internal structure design that requires minimum maintenance
- 35,000 files including demographics, results and histograms, 12 QC files (100 data per file)
- Small footprint with embedded reagent design allowing for more working space

#### Less Running Costs

#### Minimum Maintenance

#### Ingenious Internal Structure



## SP-1200/800 Protein Analyzer

### New Size, New WISE

The SP-1200/800 is a fully automated system for testing specific proteins such as CRP, SAA, HbA1c, etc. With such a compact size, the analyzer can supply a throughput of 200 T/H for medium to high laboratories. We also supply the combo reagents together with original manufacturing quality control and calibrator which simplify the customer's daily use.

- Principle: Nephelometry immunoassay
- Throughput:  $\geq 200$  T/H
- Test parameters: Wide-range CRP; Hs-CRP\*; SAA\*; HbA1C\*
- Sample type: Whole blood, Serum, Plasma, Peripheral blood, Minimum blood consumption
- Maintenance: Bleach
- Tube type: High, low and micro blood collection tube; Centrifuge tube
- Sample and reagent probe function: Liquid level detection; collision protection
- Within-run precision:  $CV \leq 5\%$
- Carry over rate:  $\leq 0.5\%$
- Dimension and Weight: 586mm (H)\*680mm (W)\*650mm (D); 79kg

\*Under development



# Veterinarian Ultrasound Within a Touch

**Acclarix™ AX3 VET**  
Veterinary Diagnostic Ultrasound System



#### Distinctive Design

- 15" Wide angle HD monitor in 180° rotation
- Humanized dual-sockets design
- Two removable built-in lithium-ion battery providing ultra-long continuous scanning
- Magnesium alloy body with unexpected light weight about 4.5 KG
- Integrated trolley with semi-automatic height adjustment

#### Definitive Image Quality

- High fidelity, high channel count architecture
- Tissue Adaptive Imaging (TAI) continuously and automatically optimizes imaging to allow more focus on the patient
  - B-mode: TAI fine tunes multiple parameters for optimal imaging
  - Doppler: TAI adjusts for flow state providing improved continuity, border detection and fill-in

#### Intelligent Workflow

- Customizable, gesture-control 10" touch screen to personalize workflow
- One-touch auto optimization for all modes
- Smart EIS platform empowering efficient diagnosis with mighty inner core

## Acclarix® AX2 VET

Veterinary Diagnostic Ultrasound System

- 15" Wide angle HD monitor in 180° rotation
- Humanized single-sockets design
- Dual built-in batteries design support ultra-long scanning
- Magnesium alloy body with unexpected light weight about 4.5 KG
- Integrated trolley with semi-automatic height Adjustment
- High fidelity, high channel count architecture
- Tissue Adaptive Imaging (TAI) continuously and automatically optimizes imaging to allow more focus on the patient
- Customizable, gesture-control 10" touch screen to personalize workflow
- One-touch auto optimization for all modes
- Smart EIS platform empowering efficient diagnosis with mighty inner core



**NEW**

## Acclarix® AX8 VET

Veterinary Diagnostic Ultrasound System

- 15" tilt-and-swivel HD LCD monitor with specially bonded glass to increase durability
- 10" touch-screen with gesture control user interface
- 5" touch screen with virtual trackball
- Fully sealed control panel eliminates debris on console
- Removable lithium-ion battery with dual touch-sensors
- High fidelity, high channel count architecture
- Tissue adaptive imaging
- Harmonic imaging, Speckle reduction imaging, Spatial and frequency compounding
- Veterinary-specific presets, comments, measurements and body-marks
- User-customizable preset menu
- High Flow/Medium Flow/Low Flow & Detail/General/Penetration quick-sets
- Customizable gesture control user interface to personalize your workflow
- Connectivity: DICOM, 4 USB port, Ethernet, video out, microphone and head phone jacks, PDF, AVI and BMP file export



**NEW**

## Acclarix® LX3 VET

Veterinary Diagnostic Ultrasound System

- 21.5" High resolution LCD monitor with "C" arm
- 14" High sensitive touch screen with gesture control
- Rotatable user panel with automatic lifting
- 5 Activated transducers sockets
- Dual built-in batteries design support ultra-long scanning
- Detachable gel warmer
- High fidelity, high channel count architecture
- Tissue Adaptive Imaging (TAI) continuously and automatically optimizes imaging to allow more focus on the patient
- Customizable, gesture-control touch screen to personalize workflow
- One-touch auto optimization for all modes
- Smart EIS platform empowering efficient diagnosis with mighty inner core



**NEW**

## Acclarix® LX2 VET

Veterinary Diagnostic Ultrasound System

- 21.5" High resolution LCD monitor with "C" arm
- 14" High sensitive touch screen with gesture control
- Rotatable user panel with automatic lifting
- 3 Activated transducers sockets
- Dual built-in batteries design support ultra-long scanning
- Detachable gel warmer
- High fidelity, high channel count architecture
- Tissue Adaptive Imaging (TAI) continuously and automatically optimizes imaging to allow more focus on the patient
- Customizable, gesture-control touch screen to personalize workflow
- One-touch auto optimization for all modes
- Smart EIS platform empowering efficient diagnosis with mighty inner core



## U60 VET Veterinary Diagnostic Ultrasound System

- 15" High resolution LCD screen
- Light-weight design for excellent mobility
- Color Doppler Imaging
- Pulsed wave Doppler
- Directional Power Doppler Imaging
- Continuous wave Doppler
- Multi-beam technology
- Harmonic imaging
- Speckle reduction technology
- Spatial compound imaging
- Multi-frequency transducer technology
- Multi-language software packages
- Built-in rechargeable Li-ion battery (optional)
- DICOM 3.0 (optional)
- Large capacity data storage (optional)
- Footswitch (optional)
- Mobile trolley (optional)
- Carrying case (optional)
- Needle-guide brackets (optional)



## U50 VET Veterinary Diagnostic Ultrasound System

- High resolution LCD screen
- Light-weight design for excellent mobility
- Color Doppler Imaging
- Pulsed wave Doppler
- Directional Power Doppler Imaging
- Continuous wave Doppler
- Multi-beam technology
- Harmonic imaging
- Speckle reduction technology
- Spatial compound imaging
- Multi-frequency transducer technology
- Multi-language software packages
- Built-in rechargeable Li-ion battery (optional)
- DICOM 3.0 (optional)
- Large capacity data storage (optional)
- Footswitch (optional)
- Mobile trolley (optional)
- Carrying case (optional)
- Needle-guide brackets (optional)



## U2 VET Veterinary Diagnostic Ultrasound System

- 15" High resolution LCD screen (19" LCD monitor is optional)
- Light-weight design for excellent mobility
- Color Doppler Imaging
- Pulsed wave Doppler
- Continuous wave Doppler
- Directional Power Doppler Imaging
- Multi-beam technology
- Harmonic imaging
- Speckle reduction technology
- Spatial compound imaging
- Multi-frequency transducer technology
- Multi-language software packages
- DVD R/W driver
- Built-in rechargeable Li-ion battery (optional)
- DICOM 3.0 (optional)
- Footswitch (optional)
- Needle-guide brackets (optional)



## DUS 60 VET Veterinary Digital Ultrasonic Diagnostic Imaging System

- 12.1" TFT-LCD screen
- Net weight 7.1kg
- Two transducer connectors
- Multi-frequency transducer technology
- Pulsed wave Doppler
- Multiple-pseudo-color options
- Multi-beam technology
- Harmonic imaging
- IP (Image Processing) function
- 256-frame cine loop memory
- Multi-language function
- Two USB ports
- Built-in rechargeable Li-ion battery (optional)
- DICOM 3.0 (optional)
- Large capacity data storage (optional)
- Footswitch (optional)
- Mobile trolley (optional)
- Carrying case (optional)
- Needle-guide brackets (optional)



## X12 VET/ X10 VET/ X8 VET Veterinary Monitor

**NEW**

- 12.1"/ 10.1"/8" color TFT-LCD display
- Ultra-slim design with no fan inside
- Optional full touch screen and waterproof silicon buttons
- Basic parameters monitoring with optional capnograph and IBP monitoring
- Specialized esophageal probes for ECG and core body temperature monitoring
- Unique breath tone indicates real-time changes of respiratory system
- Powerful data storage and long battery life



## VE-H100B Veterinary Oximeter

- LCD display with backlight control
- Dual working modes: monitoring & spot check
- Numeric and plethysmogram display
- Trend review and pulse tone modulation
- Data management together with Patient Careviewer software
- Optional battery charger stand
- Automatic power-off



## VE-300/100

### Three-channel/Single-channel Veterinary ECG

- Compact and lightweight design
- AHA/IEC 5-lead veterinary ECG cable
- Three-in-one reusable alligator clip and flat clip electrodes
- Well-designed membrane keyboard
- Complete digital filters, resisting baseline drift, AC and EMG interference
- Automatic baseline adjustment
- Built-in rechargeable Li-ion battery, AC/DC power supply

In addition to the features of VE-100, VE-300 has extra functions as follows.

- 500 ECGs internal memory
- Built-in transmission ports: RS232, Ethernet
- External printer and data transmission support via USB port


**NEW**

## H30 Vet 3-Part Veterinary Hematology Analyzer

- 6.5  $\mu$ L test volume
- Two reagents with longer shelf life
- Android-based operating system
- Dual systems detect the remaining reagent
- Independent animal algorithm and adaptive threshold
- Cats, Dogs and unlimited customized species\*
- Test-quantity-based maintenance

Efficiency  
Digitization  
Accuracy  
Norm



## H60 Vet 5-Part Veterinary Hematology Analyzer

**NEW**

### Assist animal blood test with strong clinical capability

Animals cannot speak, all diagnostics are dependent on instruments. It's necessary to have reliable analyzers for vet hospitals and clinics. With high technology of laser, flow cytometry, impedance and colorimetric, H60 Vet can provide rapid and reliable test results.

H60 Vet is dedicated to solving the pain points in veterinary diagnosis. With the user-oriented, intuitive operation system, it brings simple operating process that ease the vets' workload. Exclusive reagents and minimum maintenance effectively control the budget.

- 25 reportable parameters and 6 RUO parameters
- LIC and ALY flagging information
- Android-based operation system
- Two routine reagents with longer shelf life
- Historical result display
- 60 samples per hour
- Test-quantity-based maintenance
- 100,000 data storage capability



## i15 VET Blood Gas and Chemistry Analysis System

As a brand new POCT device specially designed for critical cares, i15 Vet is portable, easy to use and performs flexible tests on a single disposable cartridge. i15 Vet brings new era of blood gas and chemistry analysis, and it enables you to more quickly and effectively monitor and manage your patients.

- Small size and light weight with build-in rechargeable battery
- 3-step operation procedure to increase efficiency
- Complete maintenance free
- Standby at any time without reagent consumption
- Auto sample aspiration and calibration to ensure accuracy and reliability
- Seamless integration with LIS/HIS through wired and wireless networking
- 10,000 patient data storage and USB data transfer
- Friendly user interface with color LCD touch screen and "traffic light" indicator
- Build-in multimedia tutorials
- Flexible tests combination on single cartridge
- Long cartridge storage life at room temperature, ready to use at any time

### Variety of test Cartridges

	pH	pCO <sub>2</sub>	pO <sub>2</sub>	Na	K	Cl	Ca	Hct	Glu	Lac
BG3	—	—	—							
BG8	—	—	—	—	—	—	—	—		
BG4	—	—	—							—
BG9	—	—	—	—	—	—	—	—	—	
BG10	—	—	—	—	—	—	—	—	—	—
BC4				—	—	—		—		

Calculated values: cH+, HCO<sub>3</sub>-act, HCO<sub>3</sub>-std, BE(ect), BE(B), BB(B), ctCO<sub>2</sub>, sO<sub>2</sub>(est), Ca++(7.4), AnGap, tHb(est), pO<sub>2</sub>(A-a), pO<sub>2</sub>(a/A), RI, pO<sub>2</sub>/FIO<sub>2</sub>, cH+(T), pH(T), pCO<sub>2</sub>(T), pO<sub>2</sub>(T), pO<sub>2</sub>(A-a)(T), pO<sub>2</sub>(a/A)(T), RI(T), pO<sub>2</sub>(T)/FIO<sub>2</sub>, mOsm

Future menu in development: BUN/Urea & Creatinine, Coagulation test (ACT, APTT, PT), Immunoassay panels







A world of potential